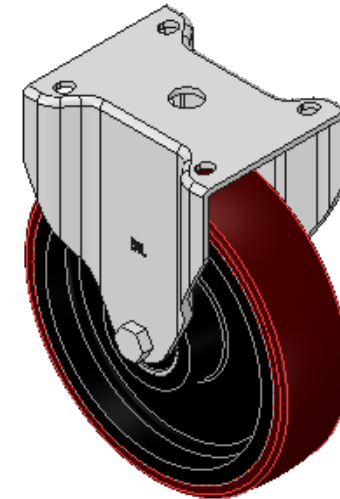
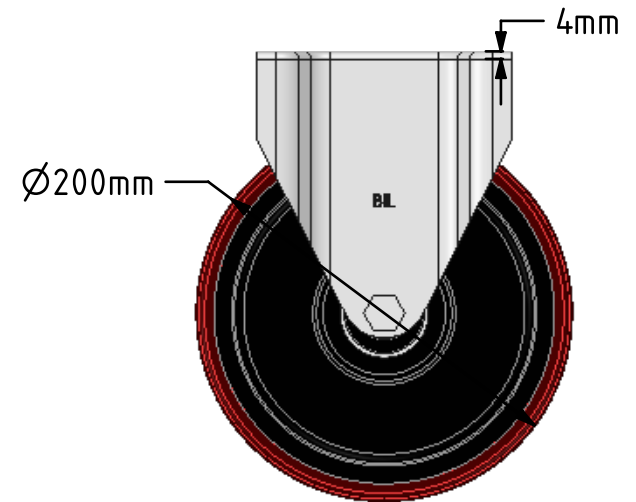
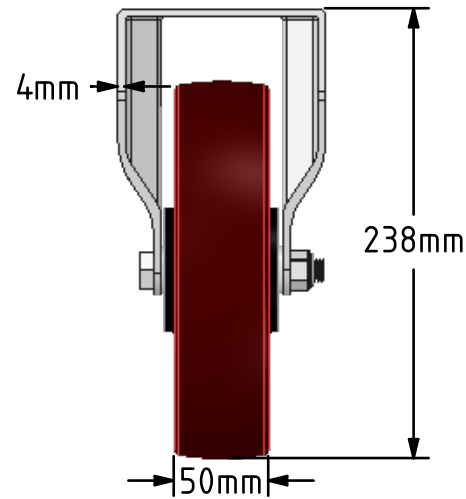
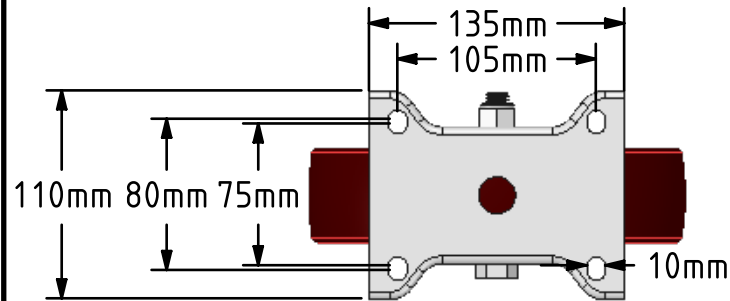
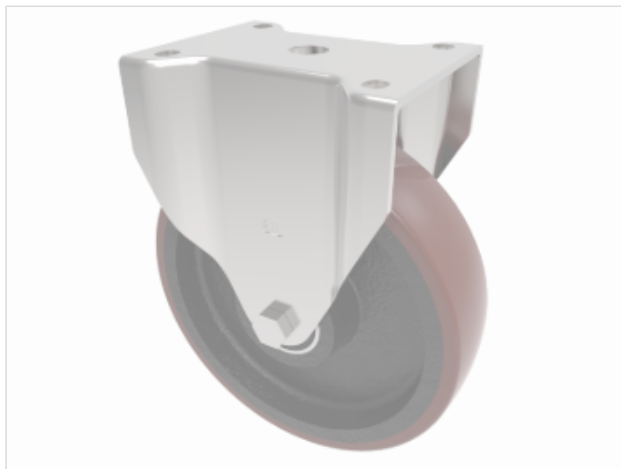


**DRAWING DISCLAIMER**

COPYRIGHT OF THIS DRAWING IS RESERVED BY BIL GROUP LTD. IT IS ISSUED ON CONDITION THAT IT IS NOT REPRODUCED, COPIED, OR DISCLOSED TO A THIRD PARTY EITHER WHOLLY OR IN PART WITHOUT THE CONSENT IN WRITING OF BIL GROUP LTD.

**Description:**  
**BZPHF200PTBJ**

Pressed steel fixed castor with a top plate fitted with a brown polyurethane tyred cast iron centred ball bearing wheel. Wheel diameter 200mm, tread width 50mm, overall height 238mm, plate size 135mm x 110mm, hole centres 105mm x 80/75mm. Load capacity 500kg.



|             | NAME    | DATE     |
|-------------|---------|----------|
| DRAWN       | Matt    | 24/07/18 |
| APPROVED BY | Tim W   | 24/07/18 |
| SCALE       | 1:4     | 24/07/18 |
| WEIGHT      | 4.925kg | 24/07/18 |

UNLESS OTHERWISE SPECIFIED DIMENSIONS ARE IN MILLIMETRES

Unspecified Tolerances  
Machining  $\pm 0.25\text{mm}$   
Fabrication  $\pm 1\text{mm}$



BIL Group Ltd, Porte Marsh Road, Calne  
Wiltshire, SN11 9BW, United Kingdom  
Tel +44 (0)1249 822 222 Fax: +44 (0)1249 822 300  
www.bilgroup.co.uk

TITLE

**BZPHF200PTBJ**

SIZE DWG NO.

A4

**BILCW03BZPHF200PTBJ\_01**

REV

**1**

FILE NAME

BILCW03BZPHF200PTBJ\_01.PDF

SHEET 1 OF 1