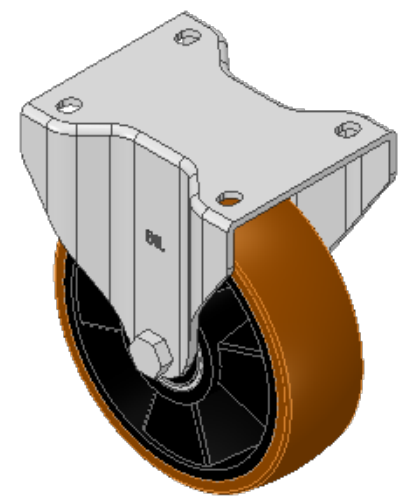
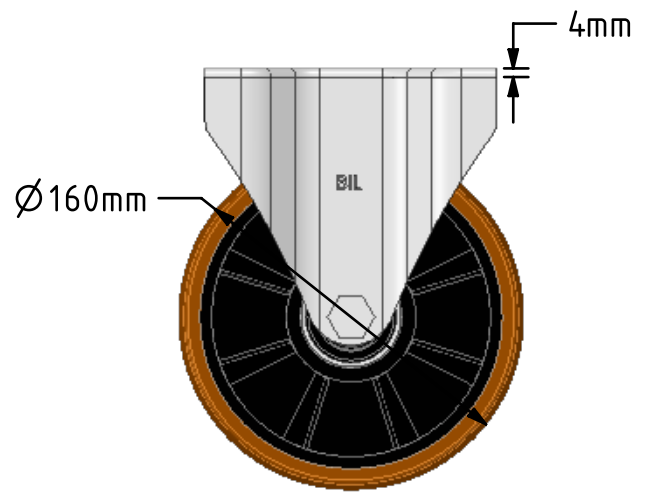
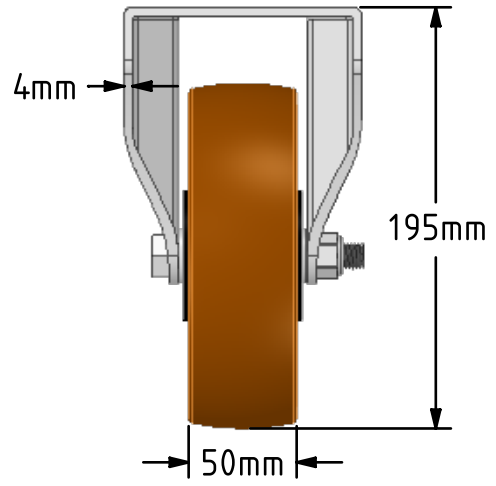
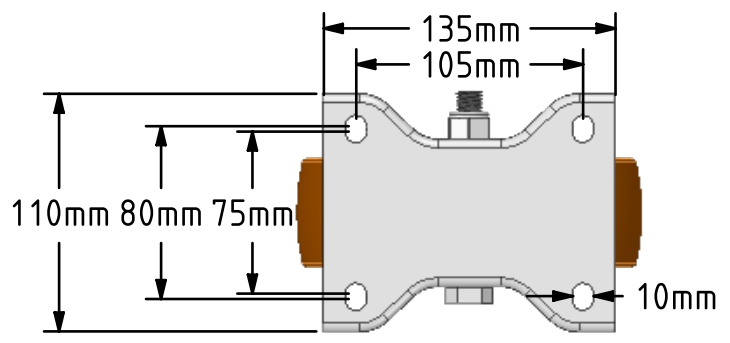


**DRAWING DISCLAIMER**  
 COPYRIGHT OF THIS DRAWING IS RESERVED BY BIL GROUP LTD. IT IS ISSUED ON CONDITION THAT IT IS NOT REPRODUCED, COPIED, OR DISCLOSED TO A THIRD PARTY EITHER WHOLLY OR IN PART WITHOUT THE CONSENT IN WRITING OF BIL GROUP LTD.



**Description:**  
 BZPHF160XPBJ  
 Pressed steel fixed castor with a top plate fixing fitted with a brown polyurethane tyre black nylon centred with ball bearings. Wheel diameter 160mm, tread width 50mm, overall height 195mm, top plate 135mm x 110mm, hole centres 105mm x 80/75mm. Load capacity 500kg.



|             | NAME   | DATE     |
|-------------|--------|----------|
| DRAWN       | Matt   | 13/12/18 |
| APPROVED BY | Tim W  | 13/12/18 |
| SCALE       | 2:7    | 13/12/18 |
| WEIGHT      | 1.95kg | 13/12/18 |

**BIL** Group Ltd, Porte Marsh Road, Calne  
 Wiltshire, SN11 9BW, United Kingdom  
 Tel +44 (0)1249 822 222 Fax: +44 (0)1249 822 300  
 www.bilgroup.co.uk

UNLESS OTHERWISE SPECIFIED DIMENSIONS ARE IN MILLIMETRES  
 Unspecified Tolerances  
 Machining ± 0.25mm  
 Fabrication ± 1mm

|                                      |                        |              |
|--------------------------------------|------------------------|--------------|
| TITLE                                |                        | REV          |
| BZPHF160XPBJ                         |                        |              |
| SIZE                                 | DWG NO.                | REV          |
| A4                                   | BILCW03BZPHF160XPBJ_01 | 1            |
| FILE NAME BILCW03BZPHF160XPBJ_01.PDF |                        | SHEET 1 OF 1 |