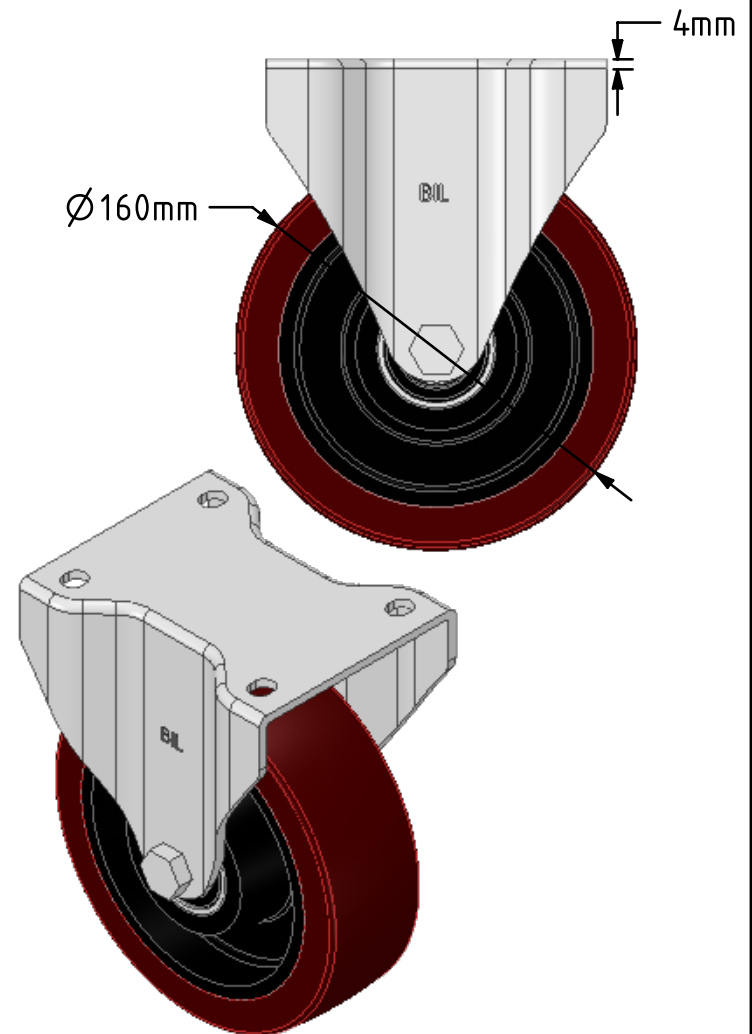
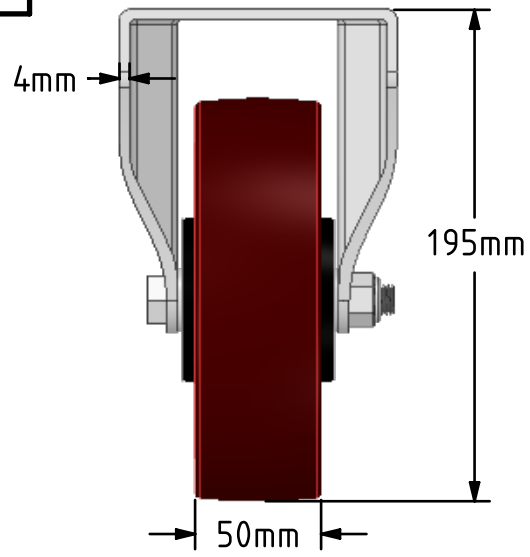
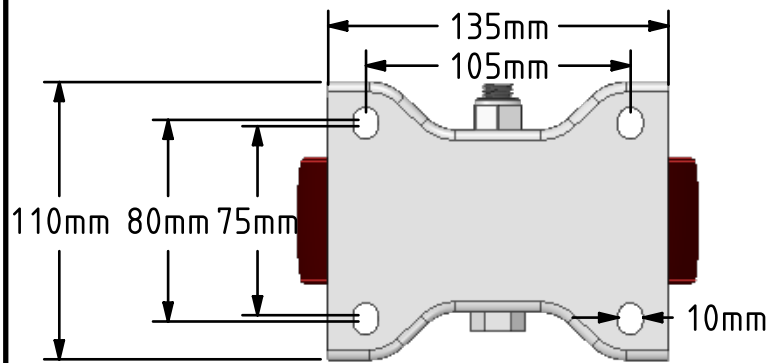
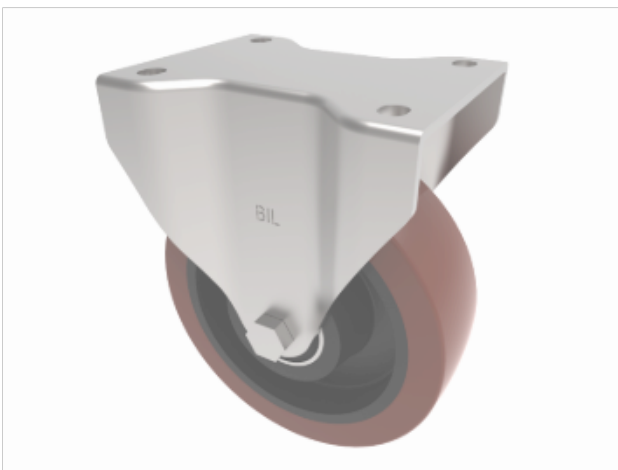


DRAWING DISCLAIMER
 COPYRIGHT OF THIS DRAWING IS RESERVED BY BIL GROUP LTD. IT IS ISSUED ON CONDITION THAT IT IS NOT REPRODUCED, COPIED, OR DISCLOSED TO A THIRD PARTY EITHER WHOLLY OR IN PART WITHOUT THE CONSENT IN WRITING OF BIL GROUP LTD.



Description:
 BZPHF160PTBJ
 Pressed steel fixed castor with a top plate fixing fitted with a brown polyurethane tyre cast iron centred wheel with ball bearings. Wheel diameter 160mm, tread width 50mm, overall height 195mm, top plate 135mm x 110mm, hole centres 105mm x 80mm/75mm. Load capacity 500kg.



	NAME	DATE
DRAWN	Matt	17/12/18
APPROVED BY	Chris	17/12/18
SCALE	1:3	17/12/18
WEIGHT	4.011kg	17/12/18
UNLESS OTHERWISE SPECIFIED DIMENSIONS ARE IN MILLIMETRES		
Unspecified Tolerances Machining ± 0.25mm Fabrication ± 1mm		

 BIL Group Ltd, Porte Marsh Road, Calne Wiltshire, SN11 9BW, United Kingdom Tel +44 (0)1249 822 222 Fax: +44 (0)1249 822 300 www.bilgroup.co.uk		TITLE	
		BZPHF160PTBJ	
SIZE	DWG NO.	REV	
A4	BILCW03BZPHF160PTBJ__01	1	
FILE NAME		SHEET 1 OF 1	
BILCW03BZPHF160PTBJ__01.PDF			