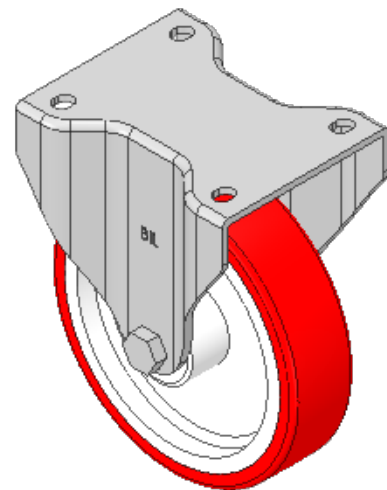
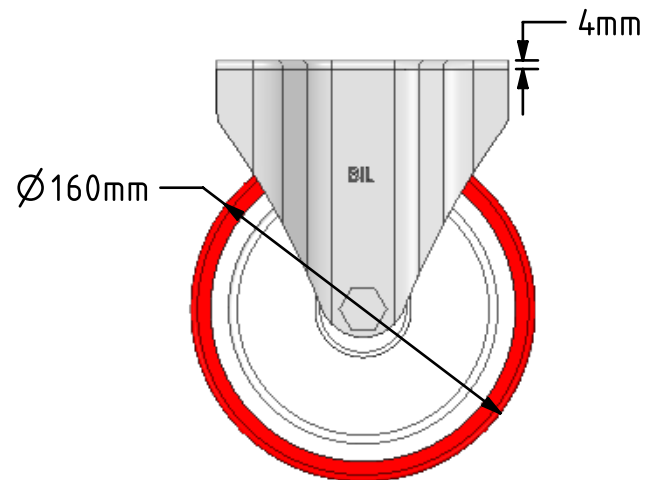
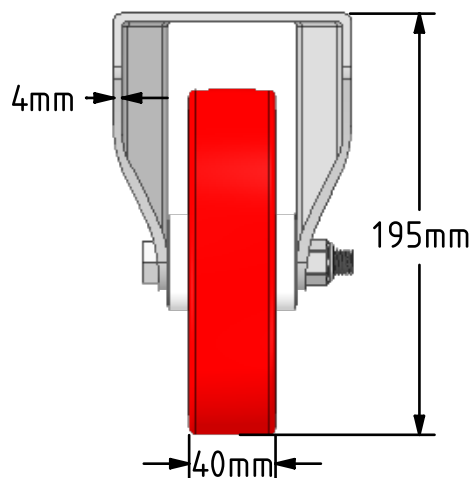
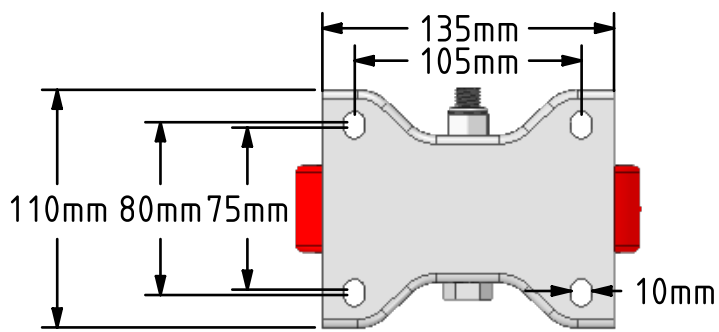
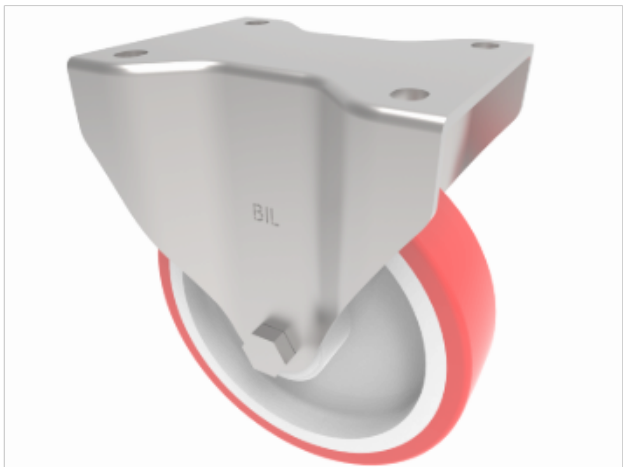


DRAWING DISCLAIMER
 COPYRIGHT OF THIS DRAWING IS RESERVED BY BIL GROUP LTD. IT IS ISSUED ON CONDITION THAT IT IS NOT REPRODUCED, COPIED, OR DISCLOSED TO A THIRD PARTY EITHER WHOLLY OR IN PART WITHOUT THE CONSENT IN WRITING OF BIL GROUP LTD.



Description:
BZPHF160NPB
 Pressed steel fixed castor with a top plate fixing fitted with a red polyurethane tyre on a white nylon centre wheel with roller bearings. Wheel diameter 160mm, tread width 40mm, overall height 195mm, top plate 135mm x 110mm, hole centres 105mm X 80/75mm. Load capacity 450kg.



	NAME	DATE
DRAWN	Matt	30/11/18
APPROVED BY	Chris	30/11/18
SCALE	2:7	30/11/18
WEIGHT	1.758kg	30/11/18

BIL Group Ltd, Porte Marsh Road, Calne
 Wiltshire, SN11 9BW, United Kingdom
 Tel +44 (0)1249 822 222 Fax: +44 (0)1249 822 300
 www.bilgroup.co.uk

UNLESS OTHERWISE SPECIFIED DIMENSIONS ARE IN MILLIMETRES
 Unspecified Tolerances
 Machining ± 0.25mm
 Fabrication ± 1mm

TITLE		
BZPHF160NPB		
SIZE	DWG NO.	REV
A4	BILCW03BZPHF160NPB_01	1
FILE NAME	BILCW03BZPHF160NPB_01.PDF SHEET 1 OF 1	