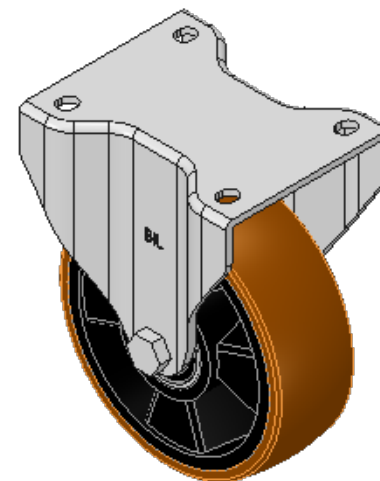
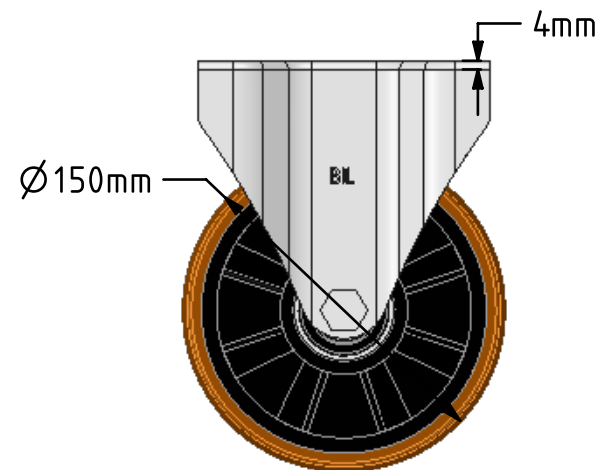
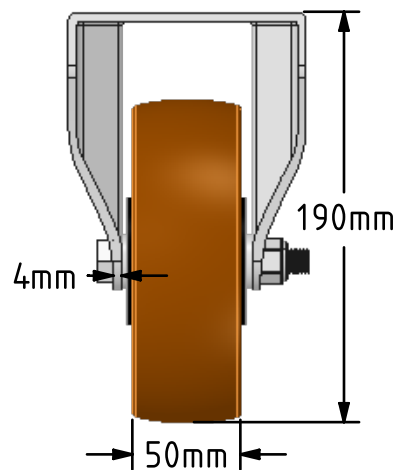
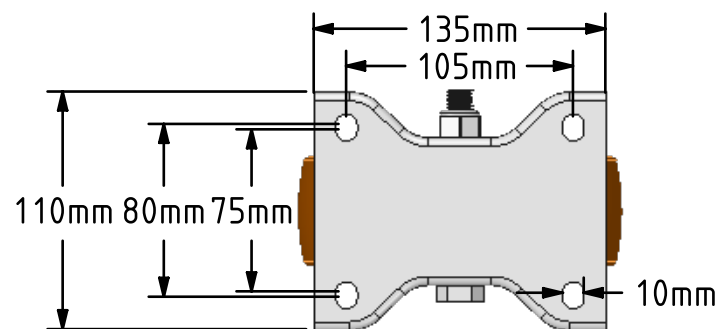
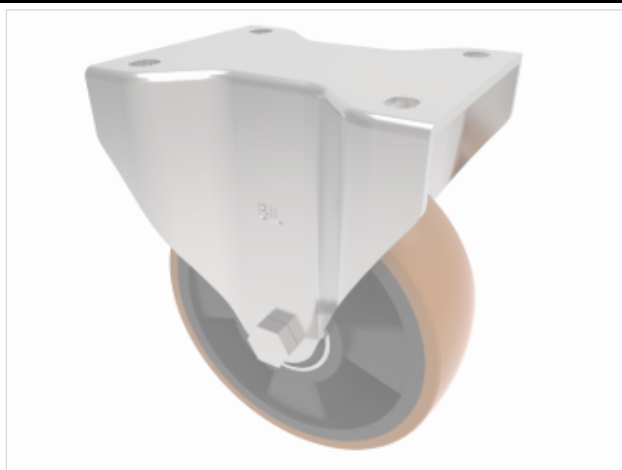


DRAWING DISCLAIMER
 COPYRIGHT OF THIS DRAWING IS RESERVED BY BIL GROUP LTD. IT IS ISSUED ON CONDITION THAT IT IS NOT REPRODUCED, COPIED, OR DISCLOSED TO A THIRD PARTY EITHER WHOLLY OR IN PART WITHOUT THE CONSENT IN WRITING OF BIL GROUP LTD.



Description:
 BZPHF150XPBJ

Pressed steel fixed castor with a top plate fixing fitted with a brown polyurethane tyre on black nylon centred wheel with ball bearings. Wheel diameter 150mm, tread width 50mm, overall height 190mm, plate size 135mm x 110mm, hole centres 105mm x 80/75mm. Load capacity 500kg.



	NAME	DATE
DRAWN	Matt	13/02/18
APPROVED BY	Tim W	13/02/18
SCALE	2:7	13/02/18
WEIGHT	1.911kg	13/02/18

UNLESS OTHERWISE SPECIFIED DIMENSIONS ARE IN MILLIMETRES

Unspecified Tolerances
 Machining ± 0.25mm
 Fabrication ± 1mm



BIL Group Ltd, Porte Marsh Road, Calne
 Wiltshire, SN11 9BW, United Kingdom
 Tel +44 (0)1249 822 222 Fax: +44 (0)1249 822 300
 www.bilgroup.co.uk

TITLE

BZPHF150XPBJ

SIZE	DWG NO.	REV
A4	BILCW03BZPHF150XPBJ_01	1

FILE NAME BILCW03BZPHF150XPBJ_01.PDF SHEET 1 OF 1