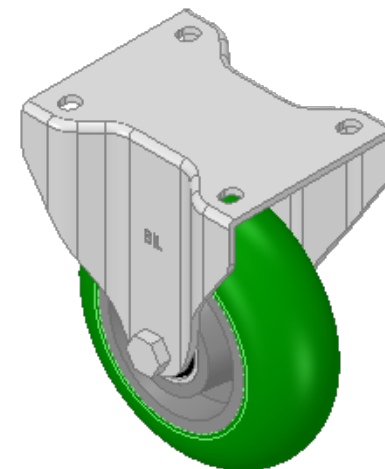
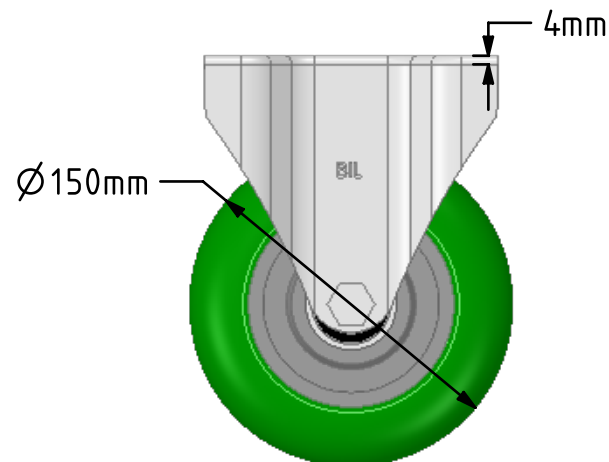
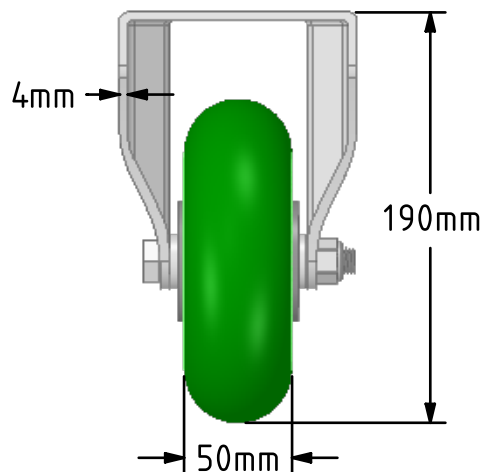
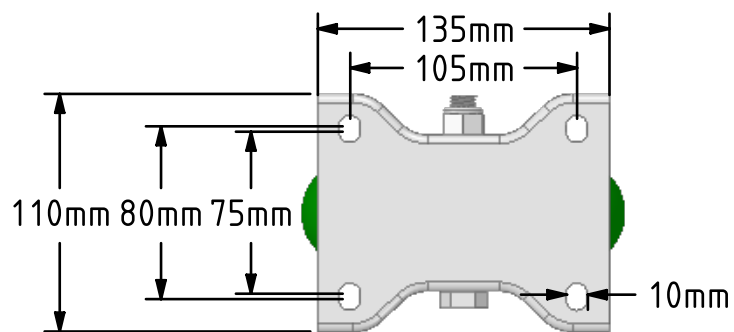


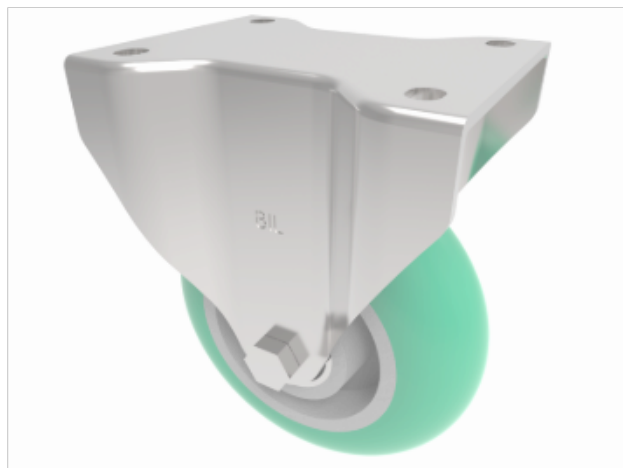
DRAWING DISCLAIMER

COPYRIGHT OF THIS DRAWING IS RESERVED BY BIL GROUP LTD. IT IS ISSUED ON CONDITION THAT IT IS NOT REPRODUCED, COPIED, OR DISCLOSED TO A THIRD PARTY EITHER WHOLLY OR IN PART WITHOUT THE CONSENT IN WRITING OF BIL GROUP LTD.

**Description:**

BZPHF150SRPTABJ

Pressed steel fixed castor with a top plate fixing fitted with a round profile green ergonomic polyurethane on aluminium centred wheel with ball bearings, Wheel diameter 150mm, tread width 50mm, overall height 190mm, top plate 135mm x 110mm, hole centres 105mm x 80/75mm. Load capacity 500kg.



	NAME	DATE
DRAWN	Matt	09/10/18
APPROVED BY	Kevin	09/10/18
SCALE	2:7	09/10/18
WEIGHT	2.504kg	09/10/18

UNLESS OTHERWISE SPECIFIED DIMENSIONS ARE IN MILLIMETRES

Unspecified Tolerances
Machining $\pm 0.25\text{mm}$
Fabrication $\pm 1\text{mm}$



BIL Group Ltd, Porte Marsh Road, Calne
Wiltshire, SN11 9BW, United Kingdom
Tel +44 (0)1249 822 222 Fax: +44 (0)1249 822 300
www.bilgroup.co.uk

TITLE

BZPHF150SRPTABJ

SIZE DWG NO.

A4

BILCW03BZPHF150SRPTABJ__01

REV

1

FILE NAME BILCW03BZPHF150SRPTABJ__01.PDF SHEET 1 OF 1