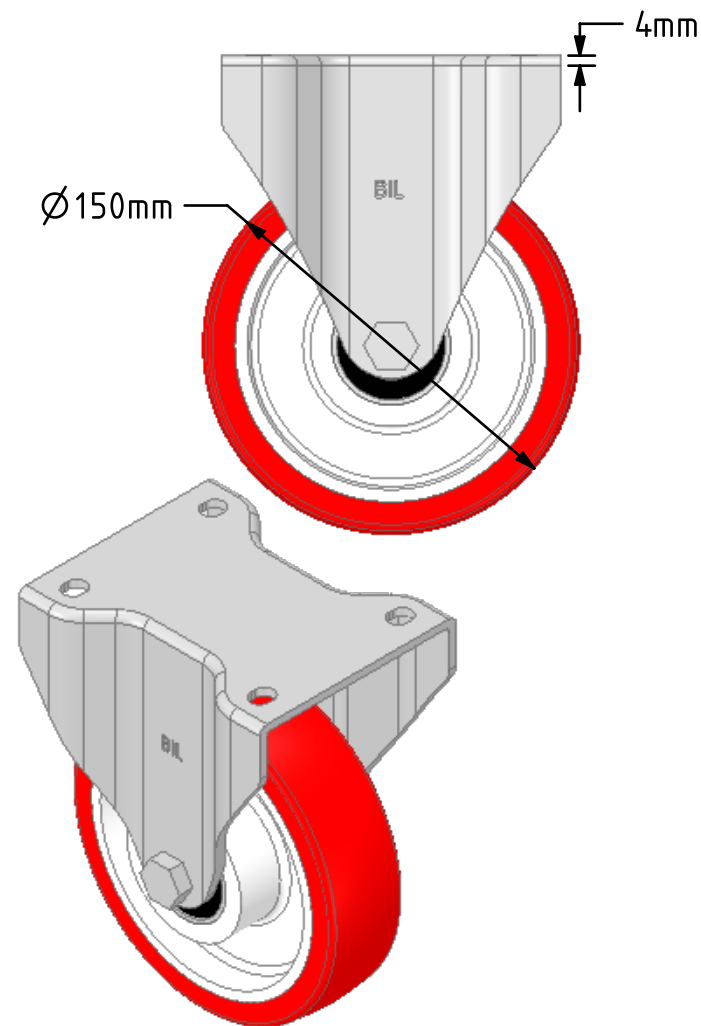
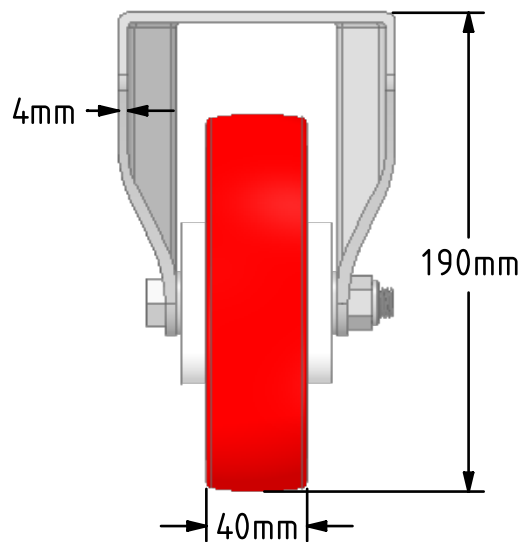
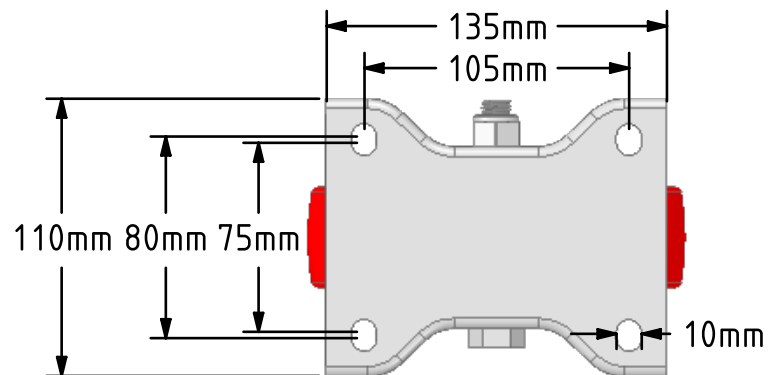


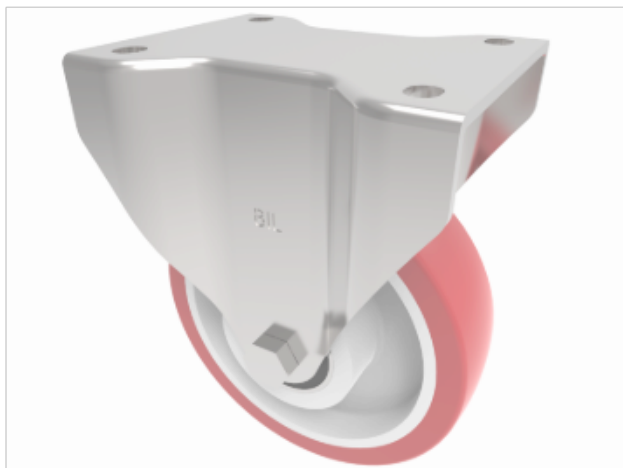
**DRAWING DISCLAIMER**

COPYRIGHT OF THIS DRAWING IS RESERVED BY BIL GROUP LTD. IT IS ISSUED ON CONDITION THAT IT IS NOT REPRODUCED, COPIED, OR DISCLOSED TO A THIRD PARTY EITHER WHOLLY OR IN PART WITHOUT THE CONSENT IN WRITING OF BIL GROUP LTD.

**Description:**

BZPHF150NPBJ

Pressed steel fixed castor with a top plate fixing fitted with a red polyurethane tyre on white nylon centred wheel with ball bearings. Wheel diameter 150mm, tread width 40mm, overall height 190mm, plate size 135mm x 110mm, hole centres 105mm x 80mm. Load capacity 500kg.



	NAME	DATE
DRAWN	Matt	28/11/18
APPROVED BY	Chris	28/11/18
SCALE	1:3	28/11/18
WEIGHT	1.82kg	28/11/18

UNLESS OTHERWISE SPECIFIED DIMENSIONS ARE IN MILLIMETRES

Unspecified Tolerances  
Machining  $\pm 0.25\text{mm}$   
Fabrication  $\pm 1\text{mm}$



BIL Group Ltd, Porte Marsh Road, Calne  
Wiltshire, SN11 9BW, United Kingdom  
Tel +44 (0)1249 822 222 Fax: +44 (0)1249 822 300  
www.bilgroup.co.uk

TITLE

BZPHF150NPBJ

SIZE DWG NO.  
A4

BILCW03BZPHF150NPBJ\_01

REV  
1

FILE NAME BILCW03BZPHF150NPBJ\_01.PDF

SHEET 1 OF 1