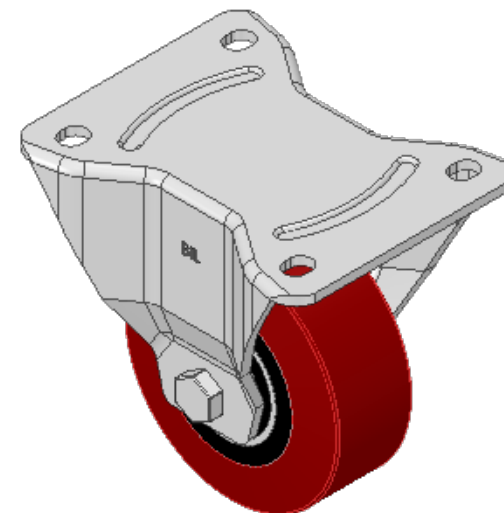
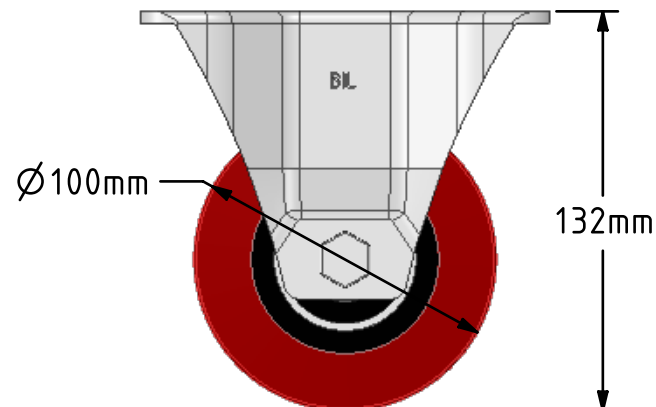
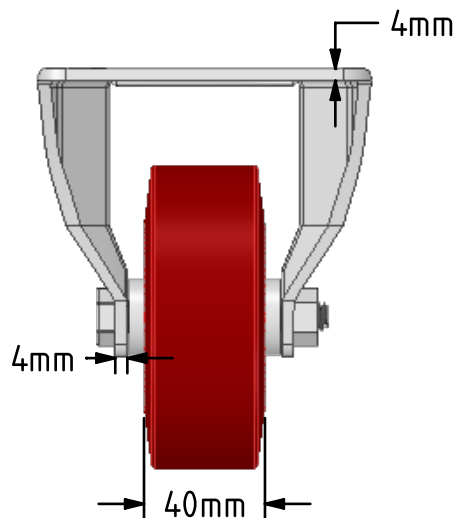
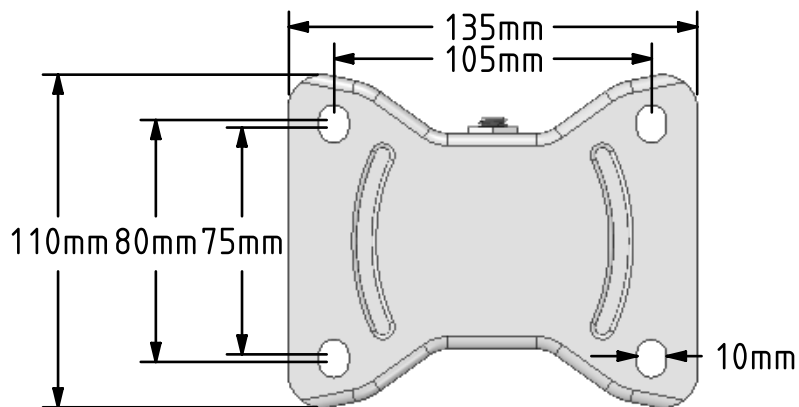


DRAWING DISCLAIMER
 COPYRIGHT OF THIS DRAWING IS RESERVED BY BIL GROUP LTD. IT IS ISSUED ON CONDITION THAT IT IS NOT REPRODUCED, COPIED, OR DISCLOSED TO A THIRD PARTY EITHER WHOLLY OR IN PART WITHOUT THE CONSENT IN WRITING OF BIL GROUP LTD.



Description:
 BZPHF100PTBJ

Pressed steel fixed castor with a top plate fixing fitted with a polyurethane tyre on a cast iron centred wheel with ball bearings. Wheel diameter 100mm, tread width 40mm, overall height 132mm, top plate 135mm x 110mm, hole centres 105mm x 80/75mm. Load capacity 300kg.



| | NAME | DATE |
|-------------|---------|----------|
| DRAWN | Matt | 14/12/18 |
| APPROVED BY | Chris | 14/12/18 |
| SCALE | 2:5 | 14/12/18 |
| WEIGHT | 1.486kg | 14/12/18 |

UNLESS OTHERWISE SPECIFIED DIMENSIONS ARE IN MILLIMETRES
 Unspecified Tolerances
 Machining ± 0.25mm
 Fabrication ± 1mm

 BIL Group Ltd, Porte Marsh Road, Calne Wiltshire, SN11 9BW, United Kingdom
 Tel +44 (0)1249 822 222 Fax: +44 (0)1249 822 300
 www.bilgroup.co.uk

TITLE
BZPHF100PTBJ

| SIZE | DWG NO. | REV |
|------|------------------------|-----|
| A4 | BILCW03BZPHF100PTBJ_01 | 1 |

FILE NAME BILCW03BZPHF100PTBJ_01.PDF SHEET 1 OF 1