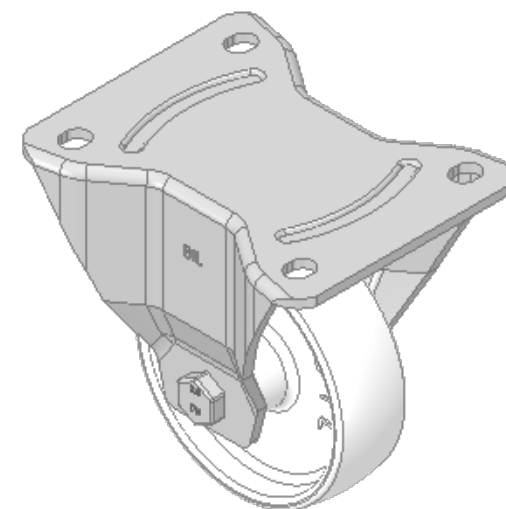
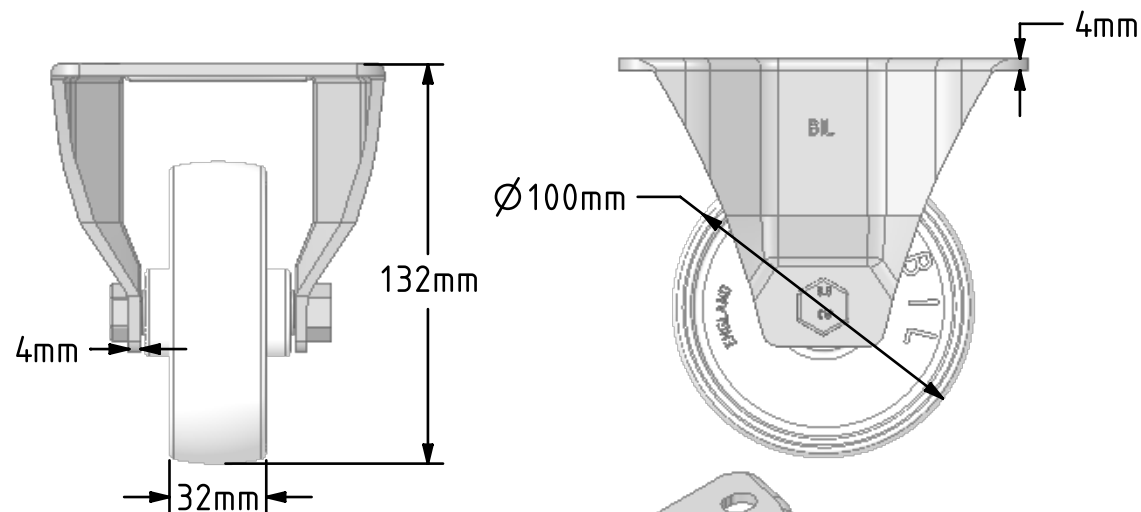
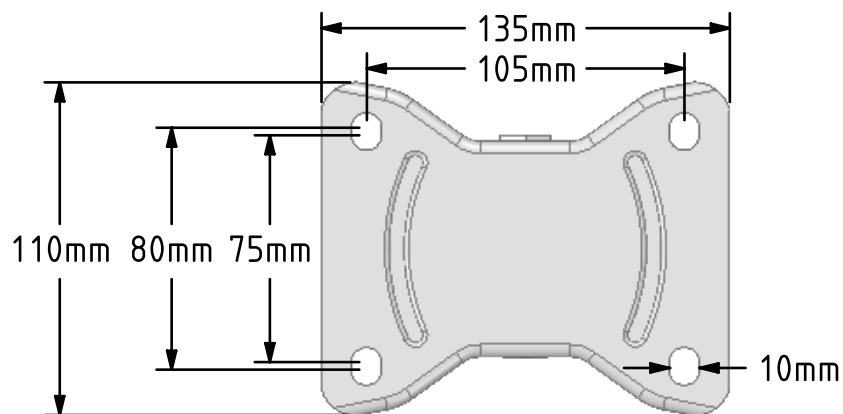


DRAWING DISCLAIMER  
 COPYRIGHT OF THIS DRAWING IS RESERVED BY BIL GROUP LTD. IT IS ISSUED ON CONDITION THAT IT IS NOT REPRODUCED, COPIED, OR DISCLOSED TO A THIRD PARTY EITHER WHOLLY OR IN PART WITHOUT THE CONSENT IN WRITING OF BIL GROUP LTD.



Description:  
 BZPHF100NY

Pressed steel fixed castor with a top plate fixing fitted with a white nylon wheel with a plain bearing. Wheel diameter 100mm, tread width 32mm, overall height 132mm, top plate 135mm x 115mm, hole centres 105mm x 80/75mm. Load capacity 270kg.



	NAME	DATE
DRAWN	Matt	31/10/18
APPROVED BY	Chris	31/10/18
SCALE	2:5	31/10/18
WEIGHT	0.761kg	31/10/18

UNLESS OTHERWISE SPECIFIED DIMENSIONS ARE IN MILLIMETRES

Unspecified Tolerances  
 Machining ± 0.25mm  
 Fabrication ± 1mm



BIL Group Ltd, Porte Marsh Road, Calne  
 Wiltshire, SN11 9BW, United Kingdom  
 Tel +44 (0)1249 822 222 Fax: +44 (0)1249 822 300  
 www.bilgroup.co.uk

TITLE

BZPHF100NY

SIZE	DWG NO.	REV
A4	BILCW03BZPHF100NY_01	1

FILE NAME BILCW03BZPHF100NY\_01.PDF SHEET 1 OF 1