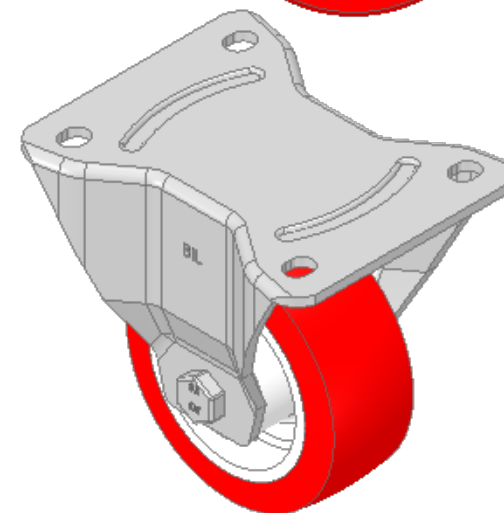
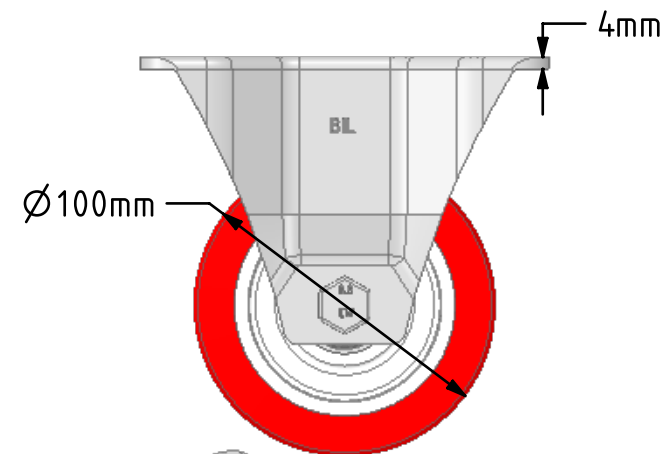
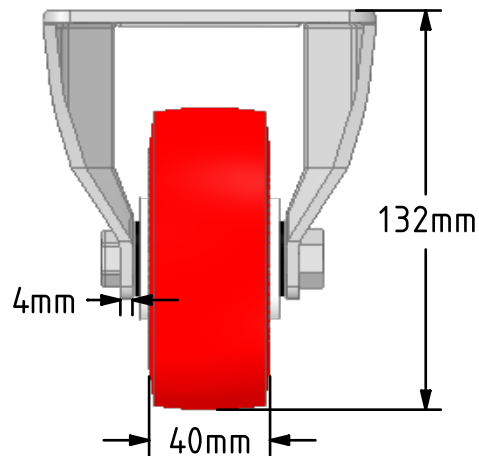
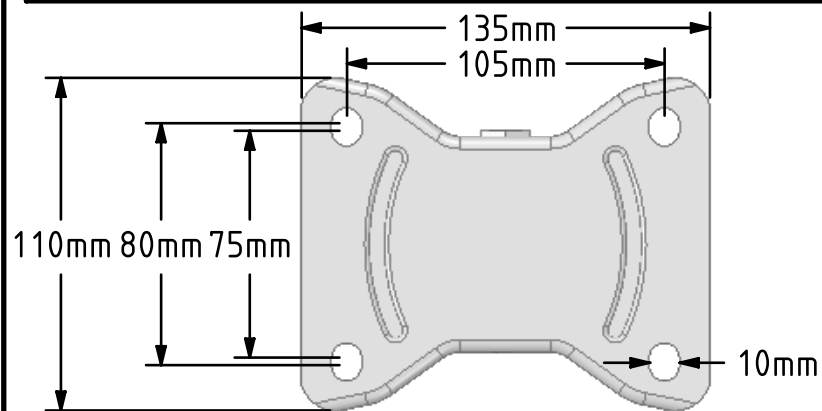


DRAWING DISCLAIMER
 COPYRIGHT OF THIS DRAWING IS RESERVED BY BIL GROUP LTD. IT IS ISSUED ON CONDITION THAT IT IS NOT REPRODUCED, COPIED, OR DISCLOSED TO A THIRD PARTY EITHER WHOLLY OR IN PART WITHOUT THE CONSENT IN WRITING OF BIL GROUP LTD.



Description:
 BZPHF100NPBJ

Pressed steel fixed castor with a top plate fixing fitted with a red polyurethane tyre on white nylon centred wheel with ball bearings. Wheel diameter 100mm, tread width 40mm, overall height 132mm, plate size 135mm x 110mm, hole centres 105mm x 80mm/75mm. Load capacity 250kg.



	NAME	DATE
DRAWN	Matt	26/11/18
APPROVED BY	Chris	26/11/18
SCALE	2:5	26/11/18
WEIGHT	0.947kg	26/11/18

UNLESS OTHERWISE SPECIFIED DIMENSIONS ARE IN MILLIMETRES

Unspecified Tolerances
 Machining ± 0.25mm
 Fabrication ± 1mm



BIL Group Ltd, Porte Marsh Road, Calne
 Wiltshire, SN11 9BW, United Kingdom
 Tel +44 (0)1249 822 222 Fax: +44 (0)1249 822 300
 www.bilgroup.co.uk

TITLE

BZPHF100NPBJ

SIZE DWG NO.
 A4

BILCW03BZPHF100NPBJ_01

REV
 1

FILE NAME BILCW03BZPHF100NPBJ_01.PDF

SHEET 1 OF 1