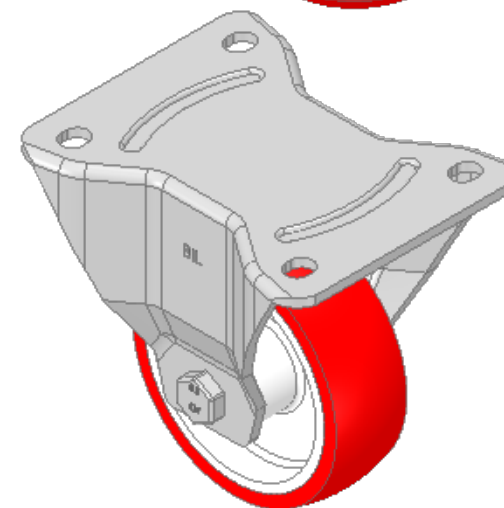
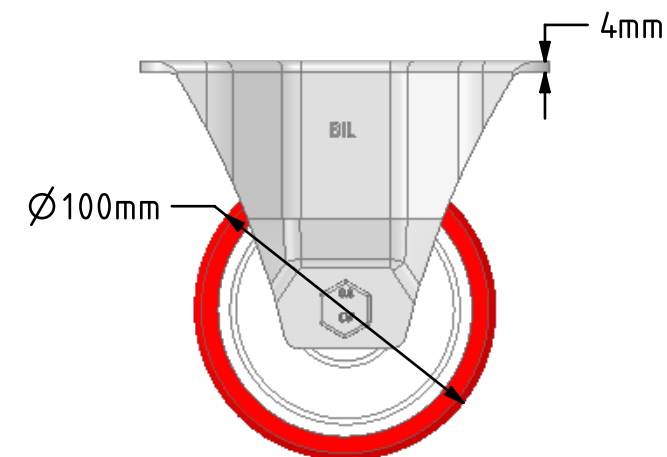
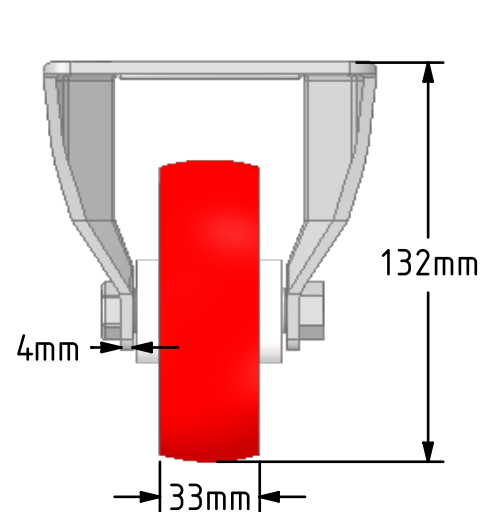
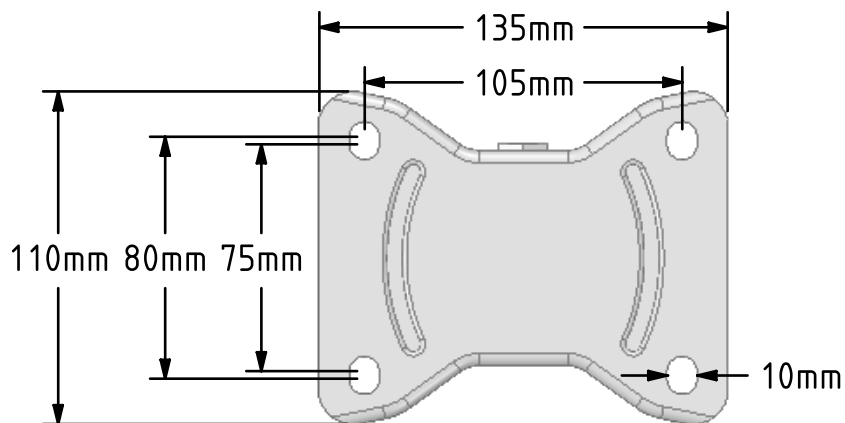


DRAWING DISCLAIMER  
 COPYRIGHT OF THIS DRAWING IS RESERVED BY BIL GROUP LTD. IT IS ISSUED ON CONDITION THAT IT IS NOT REPRODUCED, COPIED, OR DISCLOSED TO A THIRD PARTY EITHER WHOLLY OR IN PART WITHOUT THE CONSENT IN WRITING OF BIL GROUP LTD.



Description:  
 BZPHF100NPB

Pressed steel fixed castor with a top plate fixing fitted with a red polyurethane tyre on white nylon centred wheel with a roller bearing. Wheel diameter 100mm, tread width 33mm, overall height 132mm, top plate 135mm x 115mm, hole centres 105mm x 80/75mm. Load capacity 250kg.



	NAME	DATE
DRAWN	Matt	15/11/18
APPROVED BY	Tim W	15/11/18
SCALE	2.5	15/11/18
WEIGHT	0.853kg	15/11/18

UNLESS OTHERWISE SPECIFIED DIMENSIONS ARE IN MILLIMETRES

Unspecified Tolerances  
 Machining ± 0.25mm  
 Fabrication ± 1mm



BIL Group Ltd, Porte Marsh Road, Calne  
 Wiltshire, SN11 9BW, United Kingdom  
 Tel +44 (0)1249 822 222 Fax: +44 (0)1249 822 300  
 www.bilgroup.co.uk

TITLE

BZPHF100NPB

SIZE DWG NO.

A4

BILCW03BZPHF100NPB\_01

REV

1

FILE NAME

BILCW03BZPHF100NPB\_01.PDF

SHEET 1 OF 1