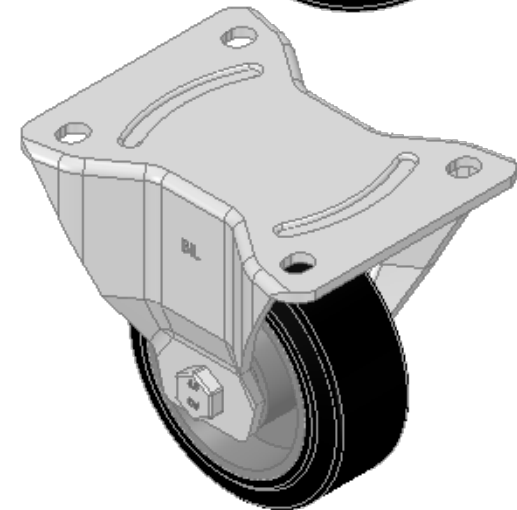
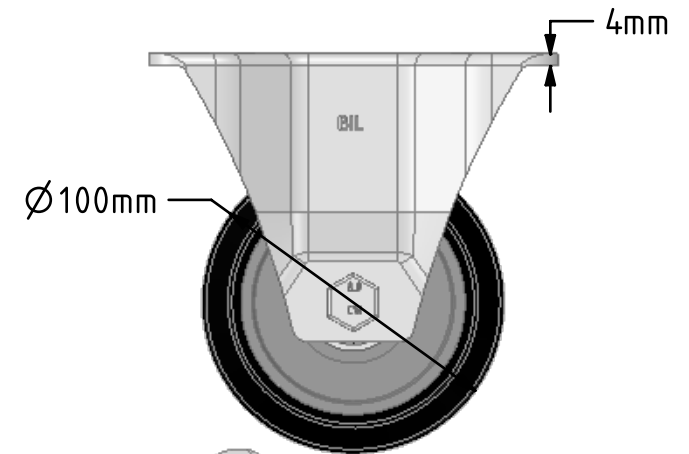
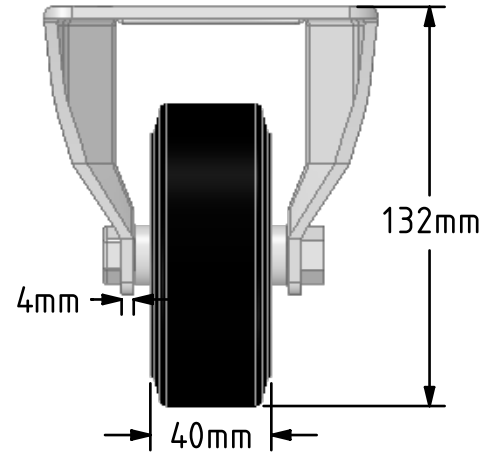
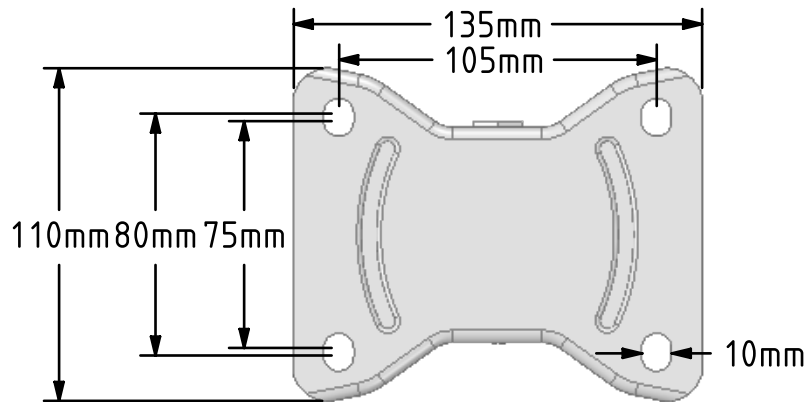



DRAWING DISCLAIMER

COPYRIGHT OF THIS DRAWING IS RESERVED BY BIL GROUP LTD. IT IS ISSUED ON CONDITION THAT IT IS NOT REPRODUCED, COPIED, OR DISCLOSED TO A THIRD PARTY EITHER WHOLLY OR IN PART WITHOUT THE CONSENT IN WRITING OF BIL GROUP LTD.

**Description:**
BZPHF100ERBJ

Pressed steel fixed castor with a top plate fixing fitted with a black high elastic natural 65 shore A rubber tyre aluminium centred wheel with ball bearings. Wheel diameter 100mm, tread width 40mm, overall height 132mm, top plate 135mm x 110mm, hole centres 105mm x 80/75mm. Load capacity 200kg. REACH compliant also PAH-Free rubber to confirm to EU-directive 2005/69/EC



	NAME	DATE	 BIL Group Ltd, Porte Marsh Road, Calne Wiltshire, SN11 9BW, United Kingdom Tel +44 (0)1249 822 222 Fax: +44 (0)1249 822 300 www.bilgroup.co.uk		
DRAWN	Matt	12/11/18			
APPROVED BY	Chris	12/11/18			
SCALE	2:5	12/11/18			
WEIGHT	1.075kg	12/11/18			
UNLESS OTHERWISE SPECIFIED DIMENSIONS ARE IN MILLIMETRES			TITLE		
Unspecified Tolerances Machining $\pm 0.25\text{mm}$ Fabrication $\pm 1\text{mm}$			BZPHF100ERBJ		
			SIZE	DWG NO.	REV
			A4	BILCW03BZPHF100ERBJ_01	1
FILE NAME			BILCW03BZPHF100ERBJ_01.PDF SHEET 1 OF 1		