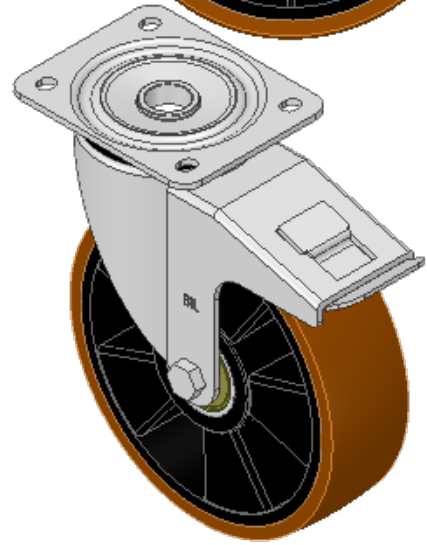
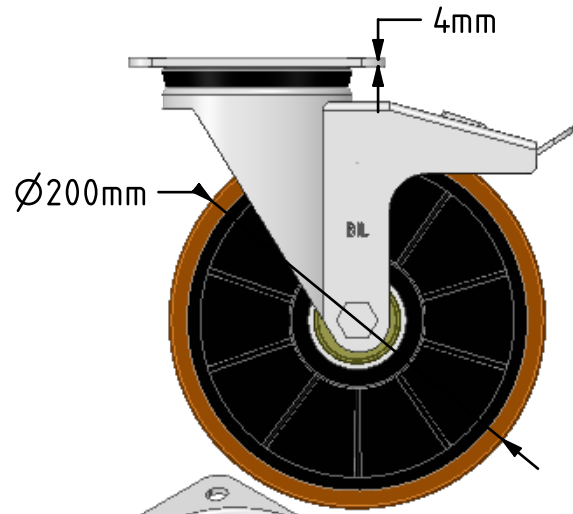
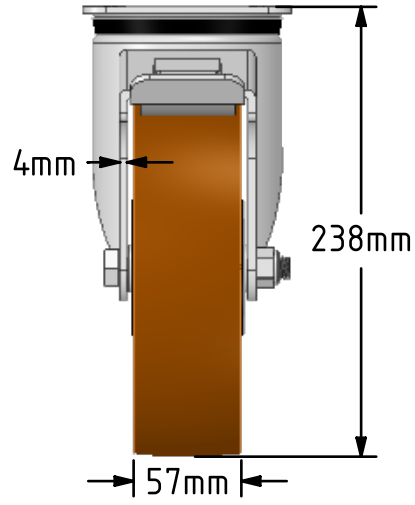
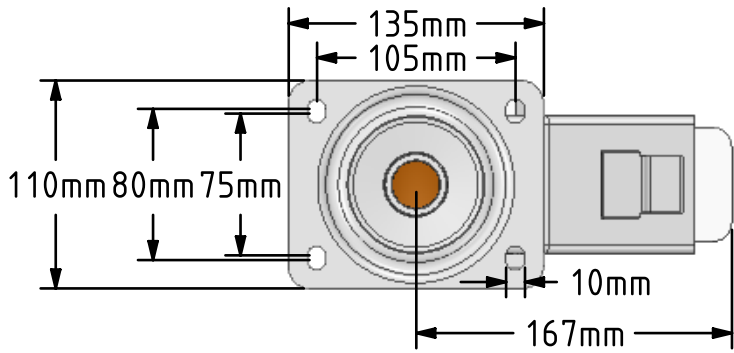


DRAWING DISCLAIMER
 COPYRIGHT OF THIS DRAWING IS RESERVED BY BIL GROUP LTD. IT IS ISSUED ON CONDITION THAT IT IS NOT REPRODUCED, COPIED, OR DISCLOSED TO A THIRD PARTY EITHER WHOLLY OR IN PART WITHOUT THE CONSENT IN WRITING OF BIL GROUP LTD.



Description:
 BZPH200XPNBJSWB
 Pressed steel swivel castor with a top plate fixing fitted with a brown polyurethane tyre black nylon centred wheel with ball bearings with total lock brake. Wheel diameter 200mm, tread width 57mm, overall height 238mm, top plate 135mm x 115mm, hole centres 105mm x 80/75mm. Load capacity 500kg.



	NAME	DATE
DRAWN	Matt	13/12/18
APPROVED BY	Tim W	13/12/18
SCALE	1:4	13/12/18
WEIGHT	3.488kg	13/12/18

BIL Group Ltd, Porte Marsh Road, Calne
 Wiltshire, SN11 9BW, United Kingdom
 Tel +44 (0)1249 822 222 Fax: +44 (0)1249 822 300
 www.bilgroup.co.uk

TITLE		BZPH200XPNBJSWB	
SIZE	DWG NO.	REV	
A4	BILCW03BZPH200XPNBJSWB_01	1	
FILE NAME		SHEET 1 OF 1	
BILCW03BZPH200XPNBJSWB_01.PDF			

UNLESS OTHERWISE SPECIFIED DIMENSIONS ARE IN MILLIMETRES
 Unspecified Tolerances
 Machining ± 0.25mm
 Fabrication ± 1mm