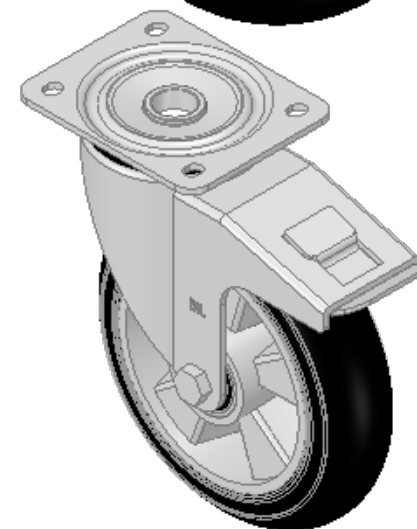
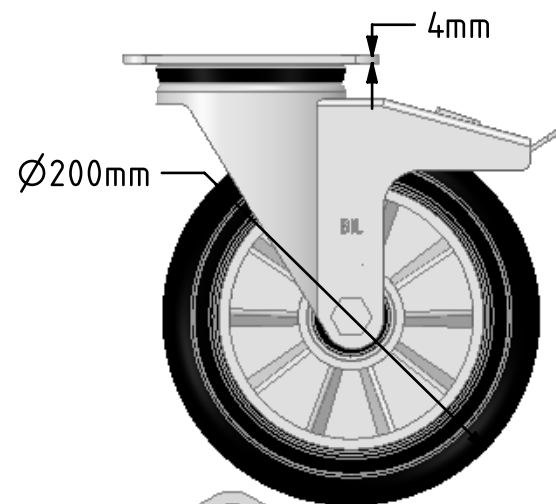
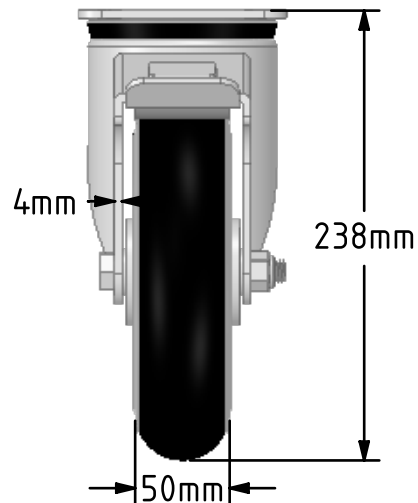
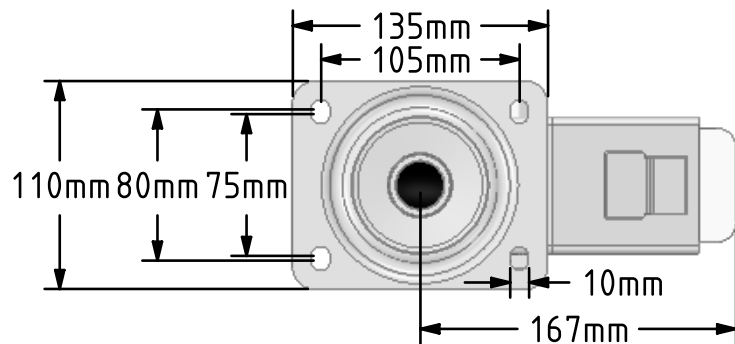


DRAWING DISCLAIMER

COPYRIGHT OF THIS DRAWING IS RESERVED BY BIL GROUP LTD. IT IS ISSUED ON CONDITION THAT IT IS NOT REPRODUCED, COPIED, OR DISCLOSED TO A THIRD PARTY EITHER WHOLLY OR IN PART WITHOUT THE CONSENT IN WRITING OF BIL GROUP LTD.



Description:
BZPH200SRERBJSWB

Pressed steel swivel castor with a top plate fixing fitted with a black high elastic natural 55 shore A round profile rubber tyre on an aluminium centred wheel with ball bearings and a total lock brake. Wheel diameter 200mm, tread width 50mm, overall height 238mm, top plate 135mm x 110mm, hole centres 105mm x 80/75mm. Load capacity 400kg. REACH compliant also PAH-Free rubber to confirm to EU-directive 2005/69/EC, also available with flat tread details on request



	NAME	DATE
DRAWN	Matt	15/11/18
APPROVED BY	Tim W	15/11/18
SCALE	1:4	15/11/18
WEIGHT	3.515kg	15/11/18

 BIL Group Ltd, Porte Marsh Road, Calne
Wiltshire, SN11 9BW, United Kingdom
Tel +44 (0)1249 822 222 Fax: +44 (0)1249 822 300
www.bilgroup.co.uk

TITLE	BZPH200SRERBJSWB	
-------	------------------	--

UNLESS OTHERWISE SPECIFIED DIMENSIONS ARE IN MILLIMETRES
Unspecified Tolerances
Machining ± 0.25mm
Fabrication ± 1mm

SIZE	DWG NO.	REV
A4	BILCW03BZPH200SRERBJSWB_01	1
FILE NAME BILCW03BZPH200SRERBJSWB_01.PDF		SHEET 1 OF 1