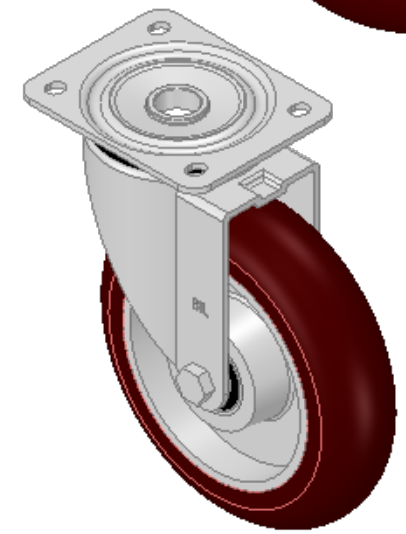
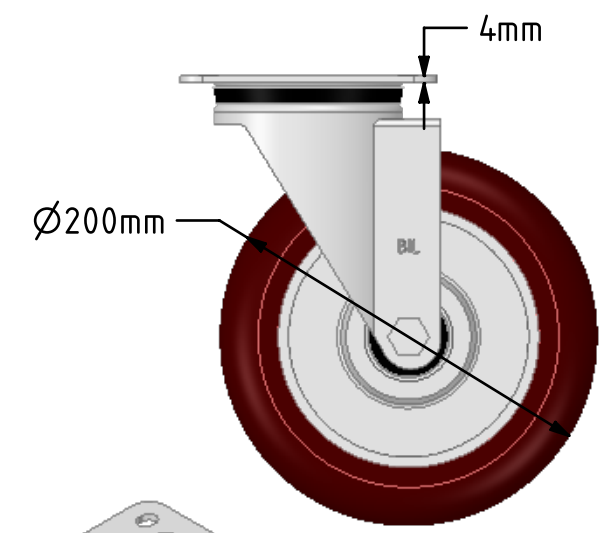
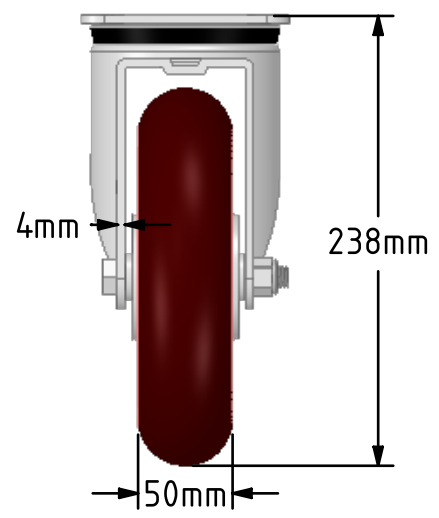
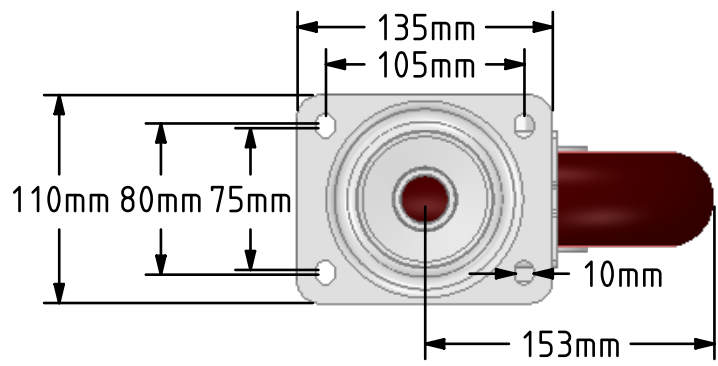
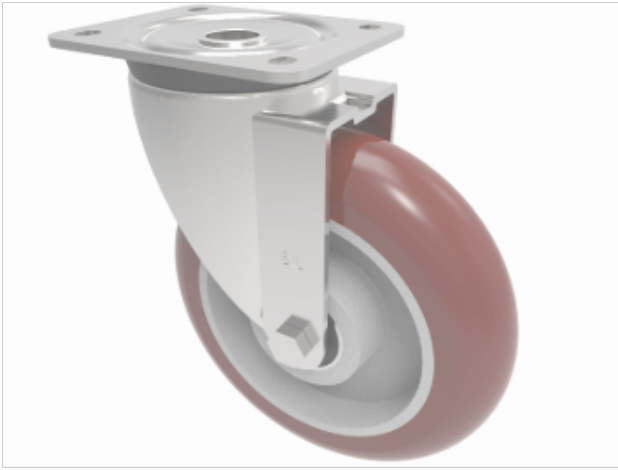


DRAWING DISCLAIMER
 COPYRIGHT OF THIS DRAWING IS RESERVED BY BIL GROUP LTD. IT IS ISSUED ON CONDITION THAT IT IS NOT REPRODUCED, COPIED, OR DISCLOSED TO A THIRD PARTY EITHER WHOLLY OR IN PART WITHOUT THE CONSENT IN WRITING OF BIL GROUP LTD.



Description:
 BZPH200RPTABJ
 Pressed steel swivel castor with a top plate fixing fitted with a round ergonomic polyurethane tyre aluminium centred wheel with ball bearings. Wheel diameter 200, tread width 50mm, overall height 238mm, plate size 135mm x 110mm, hole centres 105mm x 80mm/75mm. Load capacity 500kg.



	NAME	DATE
DRAWN	Matt	20/08/18
APPROVED BY	Chris	20/08/18
SCALE	1:4	20/08/18
WEIGHT	3.631kg	20/08/18

BIL Group Ltd, Porte Marsh Road, Calne
 Wiltshire, SN11 9BW, United Kingdom
 Tel +44 (0)1249 822 222 Fax: +44 (0)1249 822 300
 www.bilgroup.co.uk

TITLE
BZPH200RPTABJ

UNLESS OTHERWISE SPECIFIED DIMENSIONS ARE IN MILLIMETRES
 Unspecified Tolerances
 Machining ± 0.25mm
 Fabrication ± 1mm

SIZE	DWG NO.	REV
A4	BILCW03BZPH200RPTABJ_01	1
FILE NAME BILCW03BZPH200RPTABJ_01.PDF		SHEET 1 OF 1