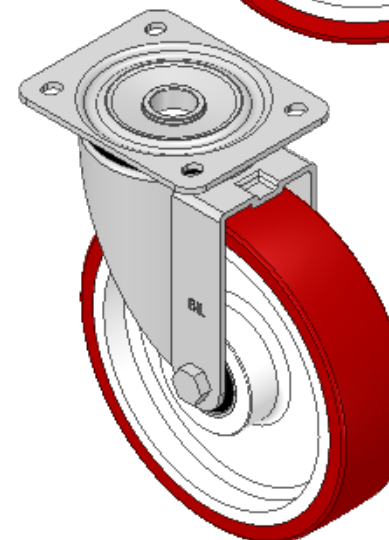
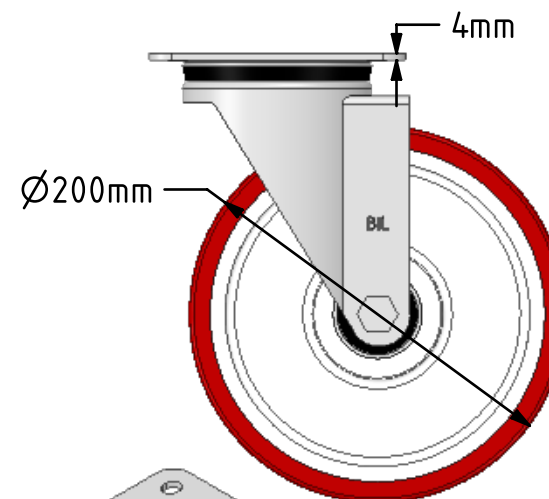
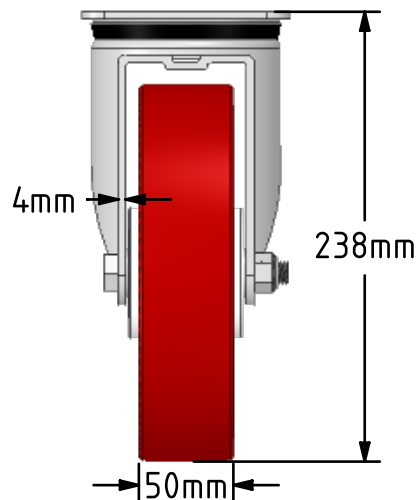
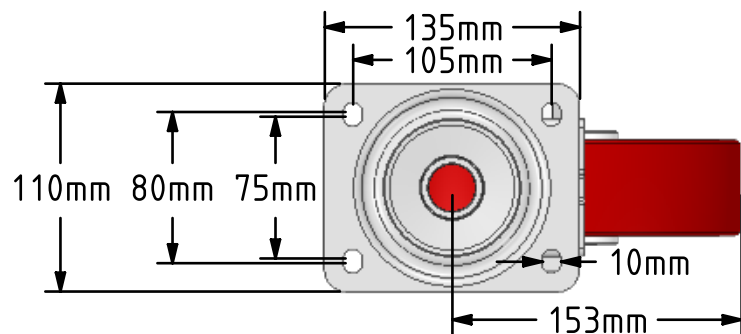


DRAWING DISCLAIMER  
 COPYRIGHT OF THIS DRAWING IS RESERVED BY BIL GROUP LTD. IT IS ISSUED ON CONDITION THAT IT IS NOT REPRODUCED, COPIED, OR DISCLOSED TO A THIRD PARTY EITHER WHOLLY OR IN PART WITHOUT THE CONSENT IN WRITING OF BIL GROUP LTD.



**Description:**  
 BZPH200NPBJ

Pressed steel swivel castor with flat top plate fixing fitted with a red polyurethane tyre on white nylon centred wheel with ball bearing. Wheel diameter 200mm, tread width 50mm, overall height 283mm, plate size 135mm x 110mm, hole centres 105mm x 80/75mm Load capacity 500kg.



	NAME	DATE
DRAWN	Matt	03/12/18
APPROVED BY	Chris	03/12/18
SCALE	1:4	03/12/18
WEIGHT	2.82kg	03/12/18

**BIL** Group Ltd, Porte Marsh Road, Calne  
 Wiltshire, SN11 9BW, United Kingdom  
 Tel +44 (0)1249 822 222 Fax: +44 (0)1249 822 300  
 www.bilgroup.co.uk

TITLE  
**BZPH200NPBJ**

UNLESS OTHERWISE SPECIFIED DIMENSIONS ARE IN MILLIMETRES  
 Unspecified Tolerances  
 Machining ± 0.25mm  
 Fabrication ± 1mm

SIZE	DWG NO.	REV
A4	BILCW03BZPH200NPBJ_01	1
FILE NAME	BILCW03BZPH200NPBJ_01.PDF	SHEET 1 OF 1