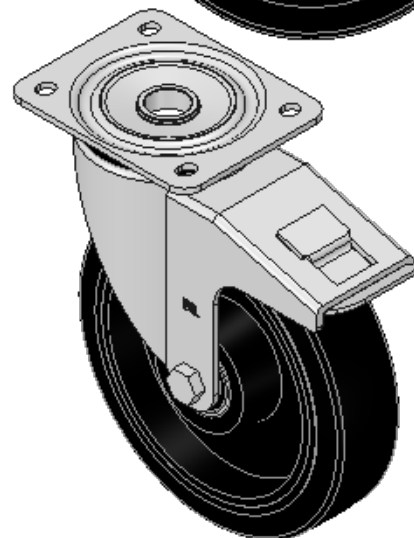
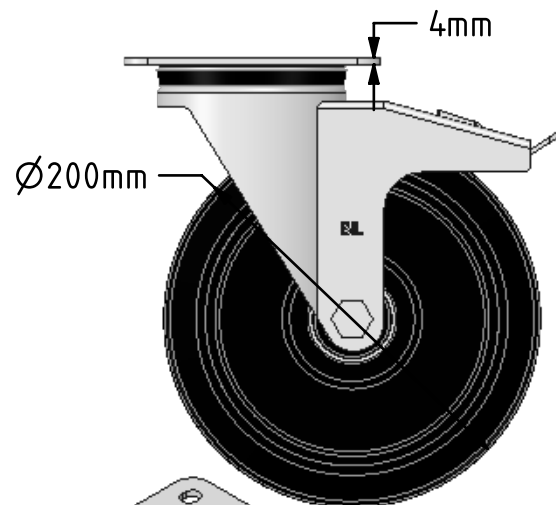
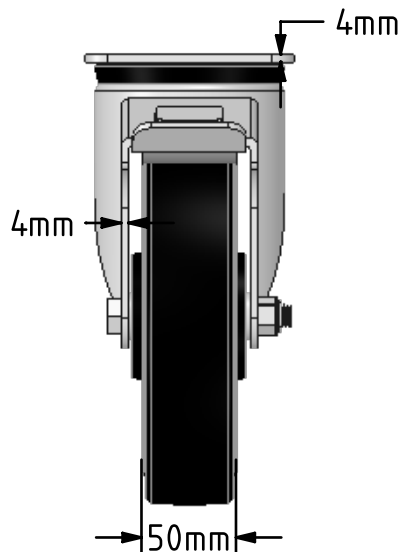
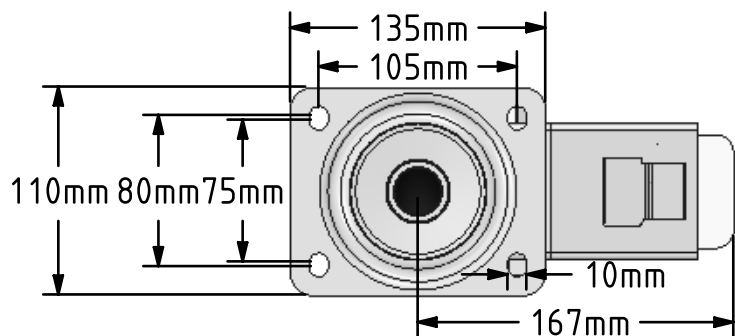


DRAWING DISCLAIMER
 COPYRIGHT OF THIS DRAWING IS RESERVED BY BIL GROUP LTD. IT IS ISSUED ON CONDITION THAT IT IS NOT REPRODUCED, COPIED, OR DISCLOSED TO A THIRD PARTY EITHER WHOLLY OR IN PART WITHOUT THE CONSENT IN WRITING OF BIL GROUP LTD.



Description:
 BZPH200CRBJSWB

Pressed steel swivel castor with a top plate fixing fitted with a black elastic rubber wheel on a cast iron centre with ball bearings and total swivel wheel brake. Wheel diameter 200mm, tread width 50mm, overall height 238mm, top plate 135mm x 110mm, hole centres 105mm x 80/75mm. Load capacity 450kg.



	NAME	DATE
DRAWN	Matt	16/03/18
APPROVED BY	Chris	16/03/18
SCALE	1:4	16/03/18
WEIGHT	5.895kg	16/03/18

UNLESS OTHERWISE SPECIFIED DIMENSIONS ARE IN MILLIMETRES

Unspecified Tolerances
 Machining ± 0.25mm
 Fabrication ± 1mm



BIL Group Ltd, Porte Marsh Road, Calne
 Wiltshire, SN11 9BW, United Kingdom
 Tel +44 (0)1249 822 222 Fax: +44 (0)1249 822 300
 www.bilgroup.co.uk

TITLE

BZPH200CRBJSWB

SIZE DWG NO.

A4

BILCW03BZPH200CRBJSWB_01

REV

1

FILE NAME BILCW03BZPH200CRBJSWB_01.PDF SHEET 1 OF 1