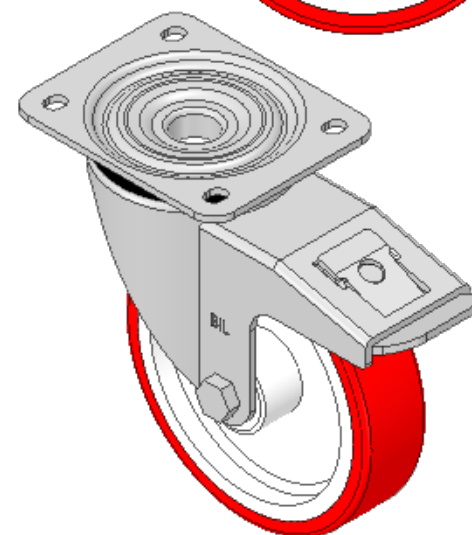
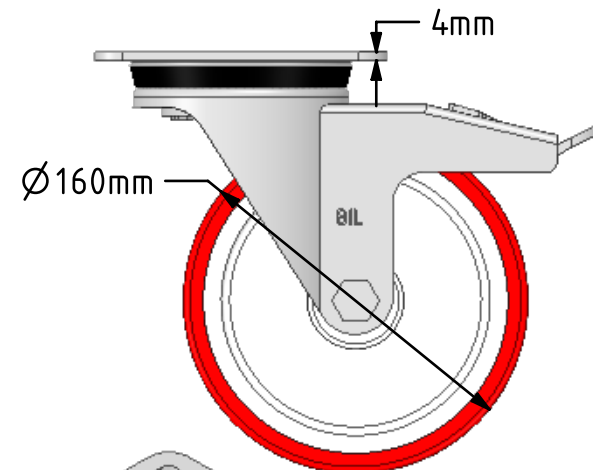
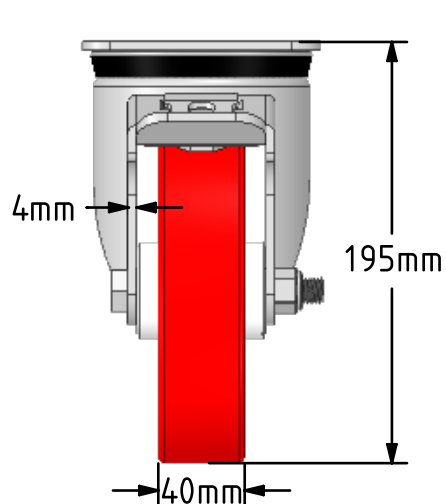
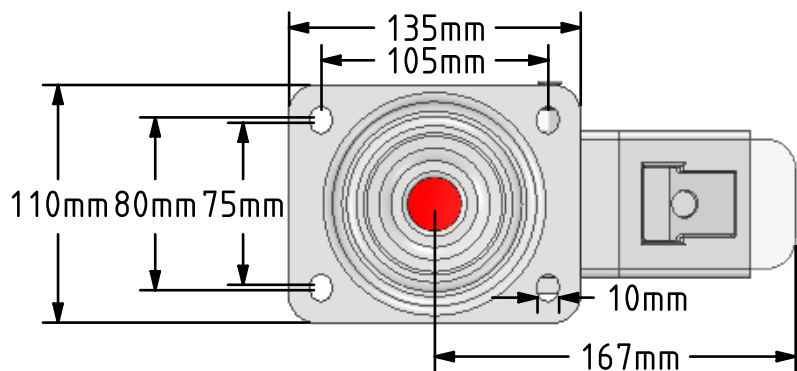


DRAWING DISCLAIMER
 COPYRIGHT OF THIS DRAWING IS RESERVED BY BIL GROUP LTD. IT IS ISSUED ON CONDITION THAT IT IS NOT REPRODUCED, COPIED, OR DISCLOSED TO A THIRD PARTY EITHER WHOLLY OR IN PART WITHOUT THE CONSENT IN WRITING OF BIL GROUP LTD.



Description:
 BZPH160NPBSWB

Pressed steel swivel castor with a top plate fixing fitted with a red polyurethane tyre on white nylon centre wheel with roller bearings and a total lock brake. Wheel diameter 160mm, tread width 40mm, overall height 195mm, top plate 135mm x 110mm, hole centres 105mm x 80/75mm. Load capacity 450kg.



	NAME	DATE
DRAWN	Matt	30/11/18
APPROVED BY	Chris	30/11/18
SCALE	2:7	30/11/18
WEIGHT	2.57kg	30/11/18

 BIL Group Ltd, Porte Marsh Road, Calne
 Wiltshire, SN11 9BW, United Kingdom
 Tel +44 (0)1249 822 222 Fax: +44 (0)1249 822 300
 www.bilgroup.co.uk

TITLE	
BZPH160NPBSWB	

UNLESS OTHERWISE SPECIFIED DIMENSIONS ARE IN MILLIMETRES
 Unspecified Tolerances
 Machining ± 0.25mm
 Fabrication ± 1mm

SIZE	DWG NO.	REV
A4	BILCW03BZPH160NPBSWB_01	1
FILE NAME		SHEET 1 OF 1
BILCW03BZPH160NPBSWB_01.PDF		