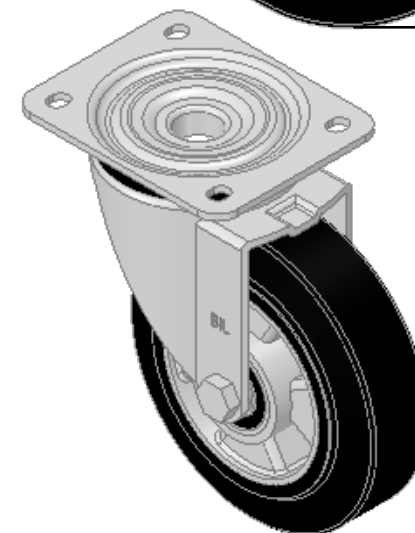
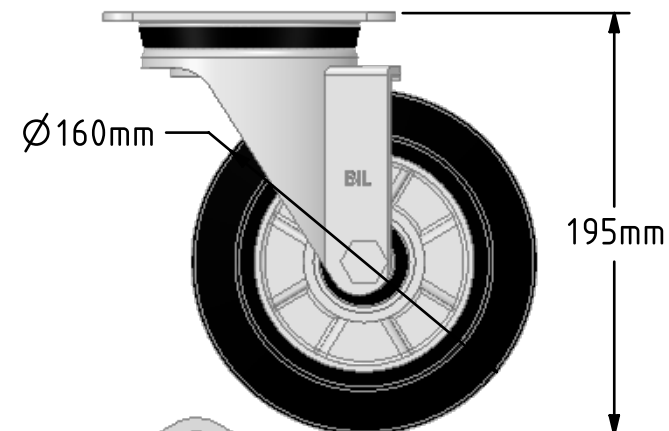
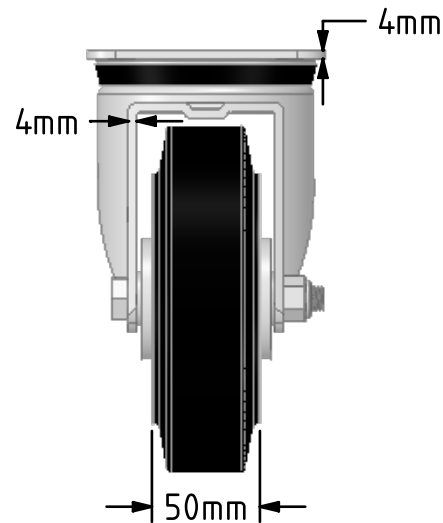
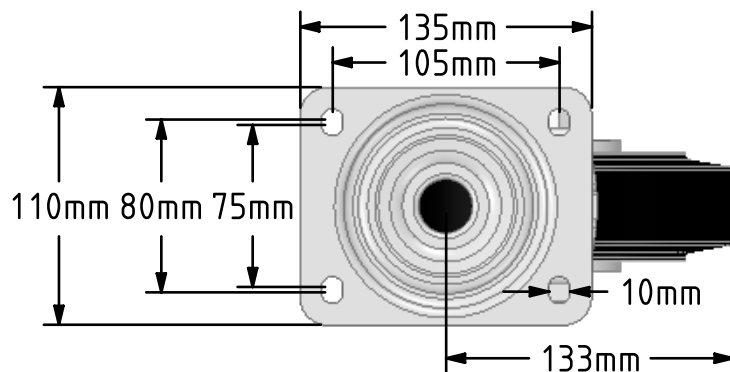


DRAWING DISCLAIMER


COPYRIGHT OF THIS DRAWING IS RESERVED BY BIL GROUP LTD. IT IS ISSUED ON CONDITION THAT IT IS NOT REPRODUCED, COPIED, OR DISCLOSED TO A THIRD PARTY EITHER WHOLLY OR IN PART WITHOUT THE CONSENT IN WRITING OF BIL GROUP LTD.

**Description:**

BZPH160ERBJ

Pressed steel swivel castor with a top plate fixing fitted with a black high elastic natural 65 shore A rubber tyre wheel aluminium centre with ball bearings. Wheel diameter 160mm, tread width 50mm, overall height 193mm, top plate 135mm x 110mm, hole centres 105mm x 80mm. Load capacity 400kg. REACH compliant also PAH-Free rubber to confirm to EU-directive 2005/69/EC



	NAME	DATE	 <div>BIL Group Ltd, Porte Marsh Road, Calne Wiltshire, SN11 9BW, United Kingdom Tel +44 (0)1249 822 222 Fax: +44 (0)1249 822 300 www.bilgroup.co.uk</div>		
DRAWN	Matt	13/11/18			
APPROVED BY	Tim W	13/11/18			
SCALE	2:1	13/11/18			
WEIGHT	2.692kg	13/11/18			
UNLESS OTHERWISE SPECIFIED DIMENSIONS ARE IN MILLIMETRES Unspecified Tolerances Machining ± 0.25mm Fabrication ± 1mm			TITLE		
			BZPH160ERBJ		
			SIZE	DWG NO.	REV
			A4	BILCW03BZPH160ERBJ__01	1
			FILE NAME	BILCW03BZPH160ERBJ__01.PDF	
			SHEET 1 OF 1		