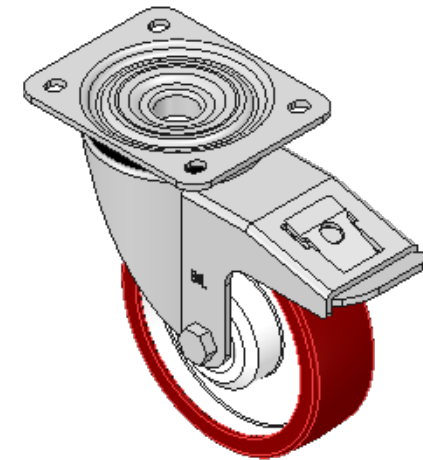
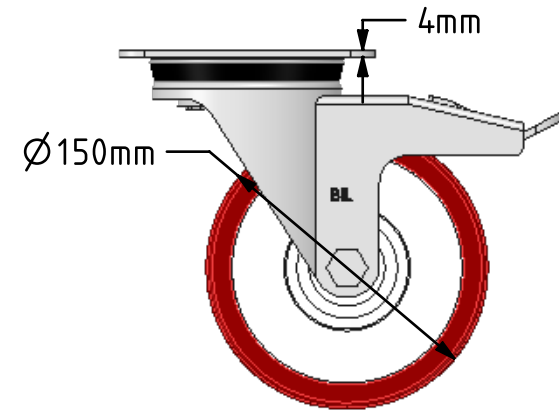
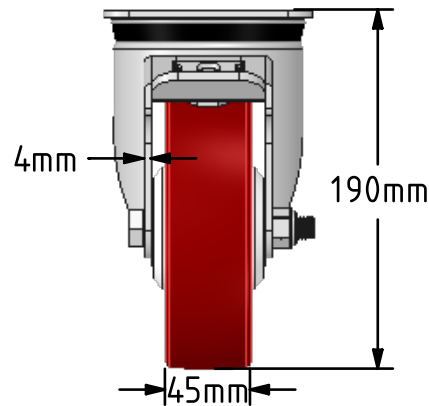
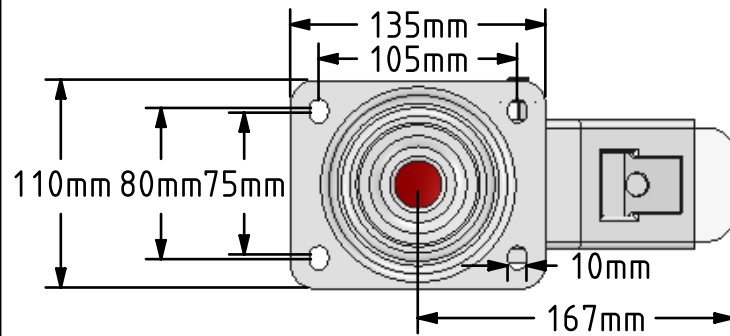


DRAWING DISCLAIMER


COPYRIGHT OF THIS DRAWING IS RESERVED BY BIL GROUP LTD. IT IS ISSUED ON CONDITION THAT IT IS NOT REPRODUCED, COPIED, OR DISCLOSED TO A THIRD PARTY EITHER WHOLLY OR IN PART WITHOUT THE CONSENT IN WRITING OF BIL GROUP LTD.

**Description:**

BZPH150PNBSWB

Pressed steel swivel castor with a top plate fixing fitted with a brown polyurethane tyre on white nylon centre wheel with roller bearings and a total lock brake. Wheel diameter 150mm, tread width 45mm, overall height 190mm, top plate 135mm x 110mm, hole centres 105mm x 80/75mm. Load capacity 500kg.



	NAME	DATE	 BIL Group Ltd, Porte Marsh Road, Calne Wiltshire, SN11 9BW, United Kingdom Tel +44 (0)1249 822 222 Fax: +44 (0)1249 822 300 www.bilgroup.co.uk		
DRAWN	Matt	23/03/18			
APPROVED BY	Kevin	23/03/18	TITLE BZPH150PNBSWB		
SCALE	1:4	23/03/18			
WEIGHT	2.558kg	23/03/18	SIZE DWG NO. A4 BILCW03BZPH150PNBSWB__01		
UNLESS OTHERWISE SPECIFIED DIMENSIONS ARE IN MILLIMETRES					REV 1
Unspecified Tolerances Machining ± 0.25mm Fabrication ± 1mm			FILE NAME BILCW03BZPH150PNBSWB__01.PDF SHEET 1 OF 1		