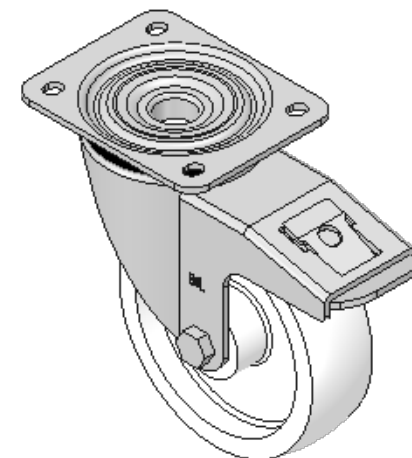
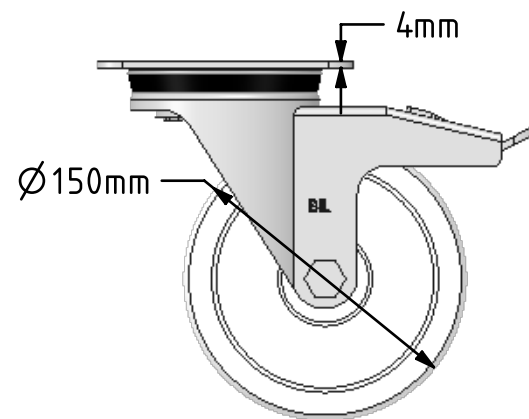
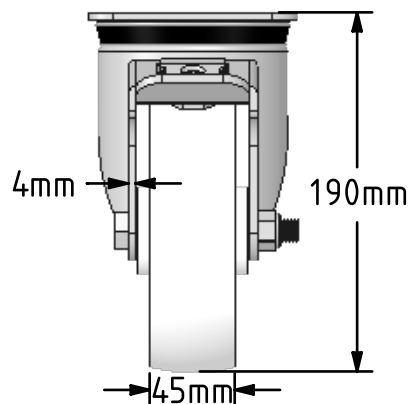
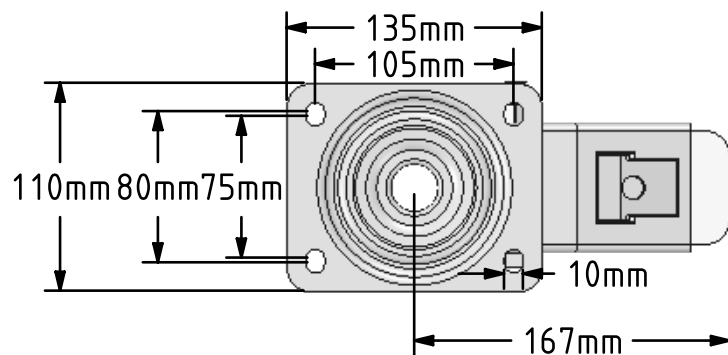



DRAWING DISCLAIMER  
 COPYRIGHT OF THIS DRAWING IS RESERVED BY BIL GROUP LTD. IT IS ISSUED ON CONDITION THAT IT IS NOT REPRODUCED, COPIED, OR DISCLOSED TO A THIRD PARTY EITHER WHOLLY OR IN PART WITHOUT THE CONSENT IN WRITING OF BIL GROUP LTD.



Description:  
 BZPH150NYSWB

Pressed steel swivel castor with a top plate fixing fitted with a white nylon wheel with a plain bearing and total lock brake. Wheel diameter 150mm, tread width 45mm, overall height 190mm, top plate 135mm x 110mm, hole centres 105mm x 80/75mm. Load capacity 500kg.



	NAME	DATE	 BIL Group Ltd, Porte Marsh Road, Calne Wiltshire, SN11 9BW, United Kingdom Tel +44 (0)1249 822 222 Fax: +44 (0)1249 822 300 www.bilgroup.co.uk
DRAWN	Matt	09/02/18	
APPROVED BY	Chris	09/02/18	
SCALE	1:4	09/02/18	
WEIGHT	2.425kg	09/02/18	TITLE
UNLESS OTHERWISE SPECIFIED DIMENSIONS ARE IN MILLIMETRES  Unspecified Tolerances Machining ± 0.25mm Fabrication ± 1mm			BZPH150NYSWB
SIZE	DWG NO.		REV
A4	BILCW03BZPH150NYSWB_01		1
FILE NAME	BILCW03BZPH150NYSWB_01.PDF		SHEET 1 OF 1