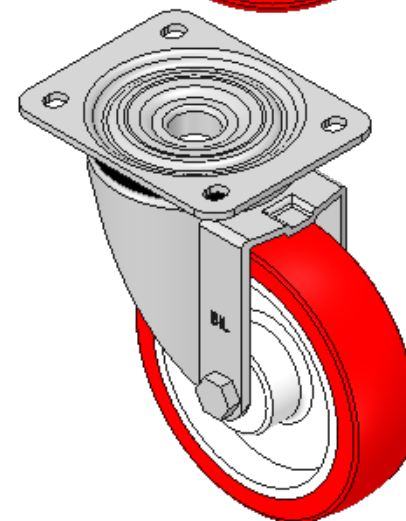
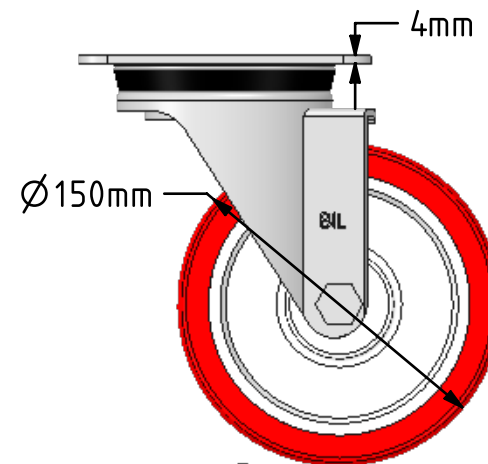
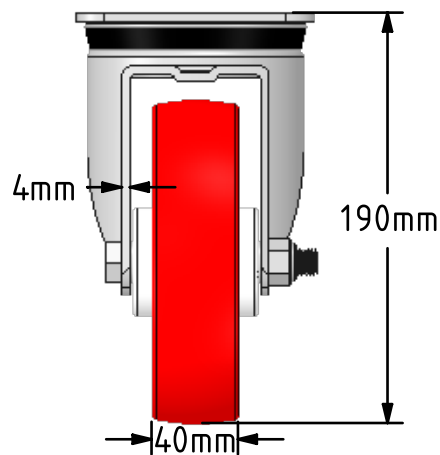
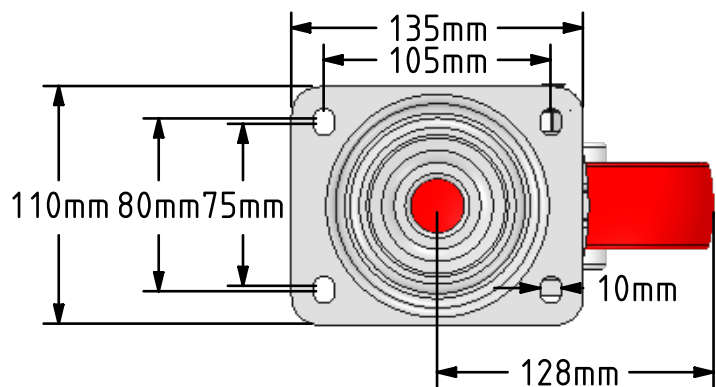



DRAWING DISCLAIMER
 COPYRIGHT OF THIS DRAWING IS RESERVED BY BIL GROUP LTD. IT IS ISSUED ON CONDITION THAT IT IS NOT REPRODUCED, COPIED, OR DISCLOSED TO A THIRD PARTY EITHER WHOLLY OR IN PART WITHOUT THE CONSENT IN WRITING OF BIL GROUP LTD.



Description:
 BZPH150NP

Pressed steel swivel castor with a top plate fixing fitted with a red polyurethane tyre on white nylon wheel. Wheel diameter 150mm, tread width 40mm, overall height 190mm, top plate 135mm x 110mm, hole centres 105mm x 75mm/80mm. Load capacity 500kg.



	NAME	DATE	 BIL Group Ltd, Porte Marsh Road, Calne Wiltshire, SN11 9BW, United Kingdom Tel +44 (0)1249 822 222 Fax: +44 (0)1249 822 300 www.bilgroup.co.uk		
DRAWN	Matt	12/02/18			
APPROVED BY	Chris	12/02/18	TITLE BZPH150NP		
SCALE	2:7	12/02/18			
WEIGHT	2.101kg	12/02/18	SIZE	DWG NO.	
UNLESS OTHERWISE SPECIFIED DIMENSIONS ARE IN MILLIMETRES Unspecified Tolerances Machining ± 0.25mm Fabrication ± 1mm			A4	BILCW03BZPH150NP__02	REV 2
			FILE NAME	BILCW03BZPH150NP__02.PDF	