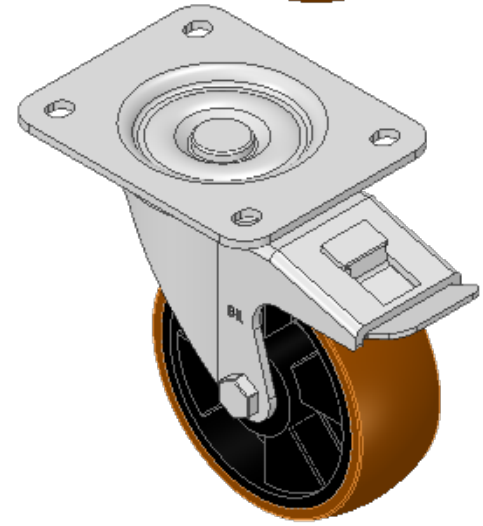
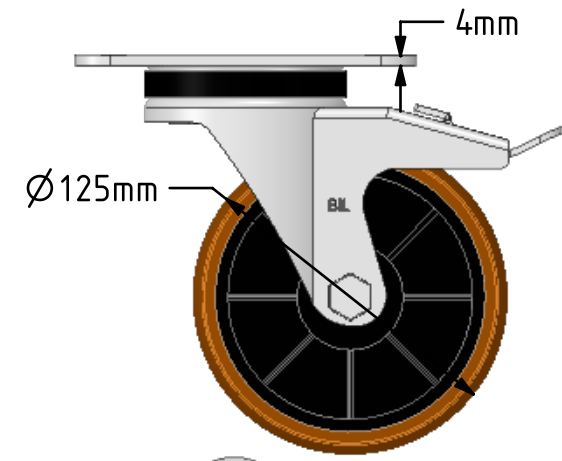
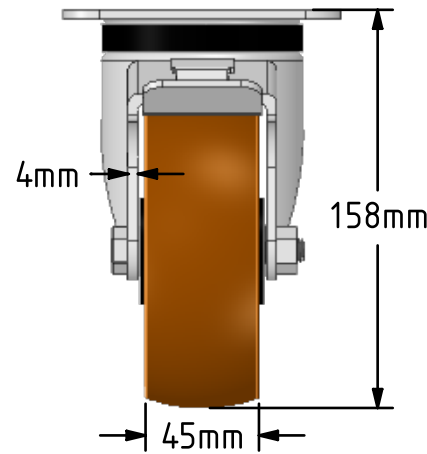
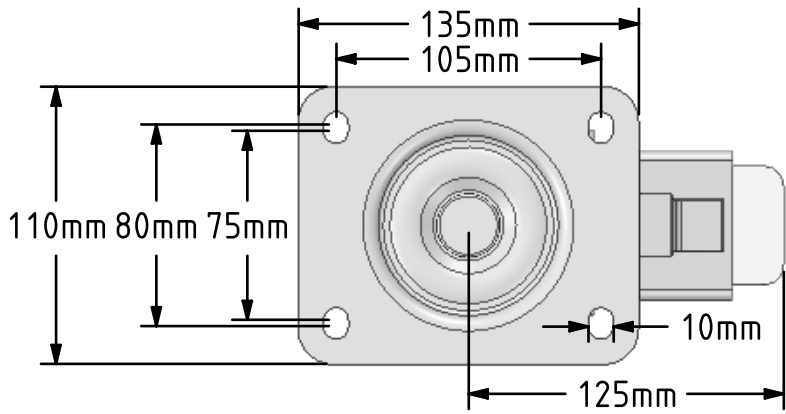


**DRAWING DISCLAIMER**  
 COPYRIGHT OF THIS DRAWING IS RESERVED BY BIL GROUP LTD. IT IS ISSUED ON CONDITION THAT IT IS NOT REPRODUCED, COPIED, OR DISCLOSED TO A THIRD PARTY EITHER WHOLLY OR IN PART WITHOUT THE CONSENT IN WRITING OF BIL GROUP LTD.



**Description:**  
**BZPH125XPNBSWB**  
 Pressed steel swivel castor with a top plate fixing fitted with a brown polyurethane on black nylon centred wheel with roller bearings and a total lock brake. Wheel diameter 125mm, tread width 45mm, overall height 158mm, top plate 135mm x 110mm, hole centres 105mm x 80/75mm. Load capacity 400kg.



	NAME	DATE
DRAWN	Matt	04/12/18
APPROVED BY	Tim W	04/12/18
SCALE	1:3	04/12/18
WEIGHT	1.722kg	04/12/18

UNLESS OTHERWISE SPECIFIED DIMENSIONS ARE IN MILLIMETRES  
 Unspecified Tolerances  
 Machining ± 0.25mm  
 Fabrication ± 1mm

**BIL** Group Ltd, Porte Marsh Road, Calne Wiltshire, SN11 9BW, United Kingdom  
 Tel +44 (0)1249 822 222 Fax: +44 (0)1249 822 300  
 www.bilgroup.co.uk

TITLE		
<b>BZPH125XPNBSWB</b>		
SIZE	DWG NO.	REV
A4	BILCW03BZPH125XPNBSWB_01	1
FILE NAME		SHEET 1 OF 1
BILCW03BZPH125XPNBSWB_01.PDF		