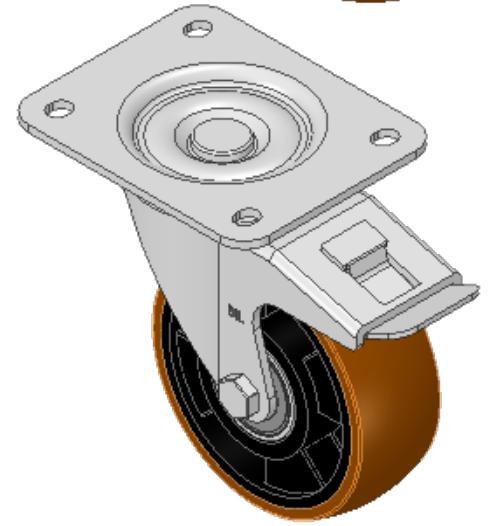
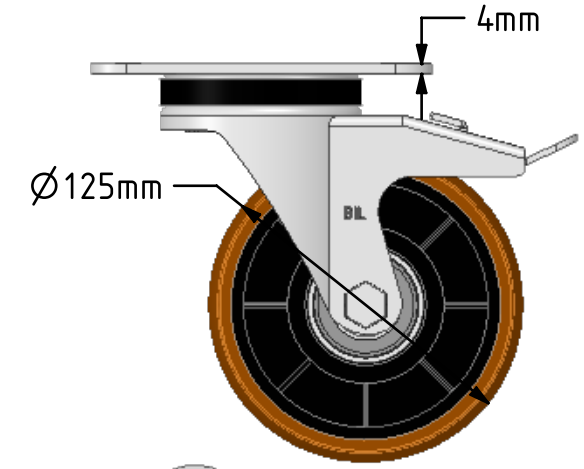
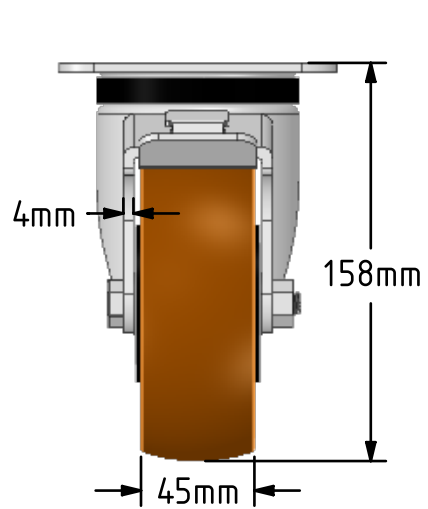
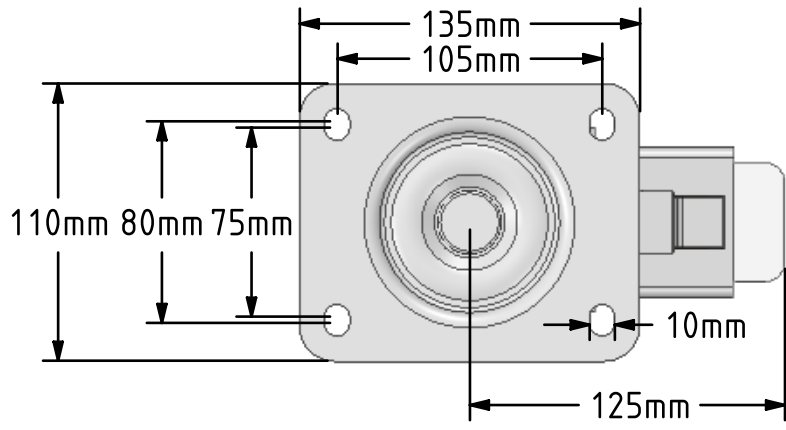


DRAWING DISCLAIMER
 COPYRIGHT OF THIS DRAWING IS RESERVED BY BIL GROUP LTD. IT IS ISSUED ON CONDITION THAT IT IS NOT REPRODUCED, COPIED, OR DISCLOSED TO A THIRD PARTY EITHER WHOLLY OR IN PART WITHOUT THE CONSENT IN WRITING OF BIL GROUP LTD.



Description:
 BZPH125XPNBJSWB
 Pressed steel swivel castor with a top plate fixing fitted with a brown polyurethane on black nylon centred wheel with ball bearings and a total lock brake. Wheel diameter 125mm, tread width 45mm, overall height 158mm, top plate 135mm x 110mm, hole centres 105mm x 80/75mm. Load capacity 400kg.



	NAME	DATE
DRAWN	Matt	04/12/18
APPROVED BY	Tim W	04/12/18
SCALE	1:3	04/12/18
WEIGHT	1.897kg	04/12/18

BIL Group Ltd, Porte Marsh Road, Calne
 Wiltshire, SN11 9BW, United Kingdom
 Tel +44 (0)1249 822 222 Fax: +44 (0)1249 822 300
 www.bilgroup.co.uk

TITLE
BZPH125XPNBJSWB

UNLESS OTHERWISE SPECIFIED DIMENSIONS ARE IN MILLIMETRES
 Unspecified Tolerances
 Machining ± 0.25mm
 Fabrication ± 1mm

SIZE	DWG NO.	REV
A4	BILCW03BZPH125XPNBJSWB_01	1
FILE NAME BILCW03BZPH125XPNBJSWB_01.PDF		SHEET 1 OF 1