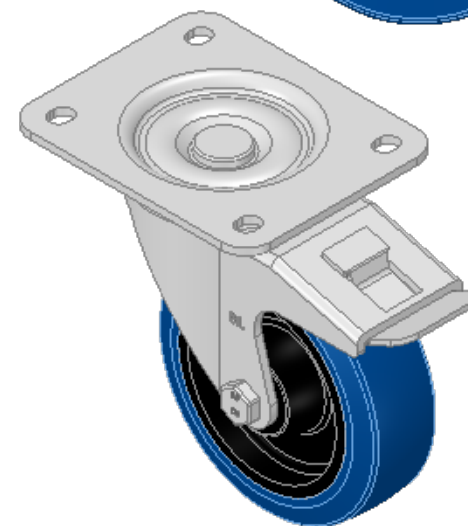
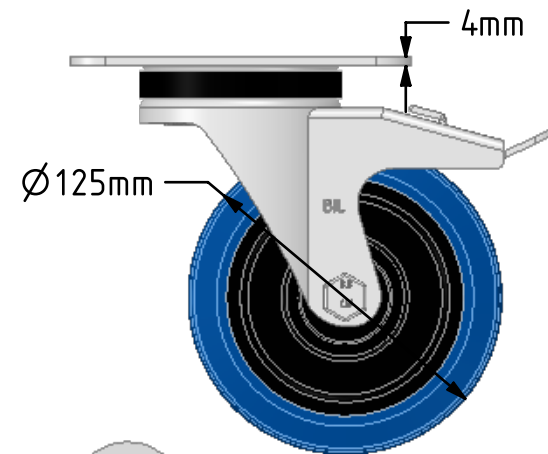
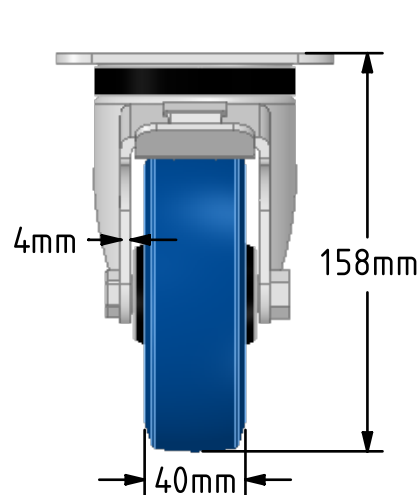
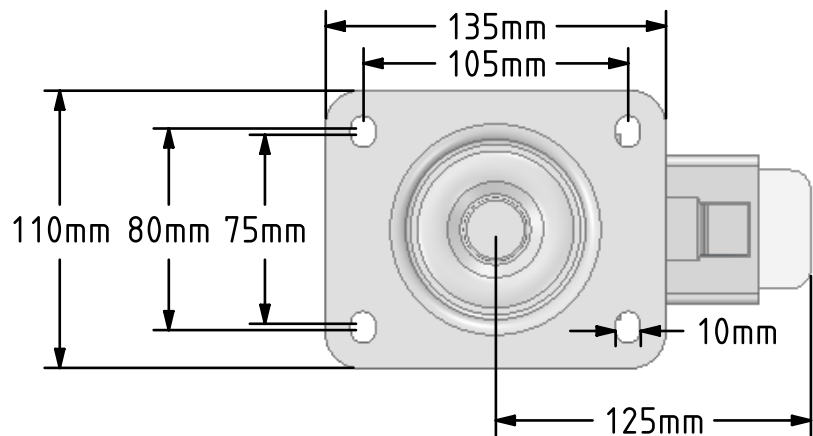


DRAWING DISCLAIMER  
 COPYRIGHT OF THIS DRAWING IS RESERVED BY BIL GROUP LTD. IT IS ISSUED ON CONDITION THAT IT IS NOT REPRODUCED, COPIED, OR DISCLOSED TO A THIRD PARTY EITHER WHOLLY OR IN PART WITHOUT THE CONSENT IN WRITING OF BIL GROUP LTD.



Description:  
 BZPH125RNBSWB

Pressed steel swivel braked castor with a top plate fixing fitted with a blue 75 shore A elastic rubber tyre on a black nylon centred wheel with a roller bearing. Wheel diameter 125mm, tread width 40mm, overall height 158mm, top plate 135mm x 110mm, hole centres 105mm x 80/75mm. Load capacity 250kg.



	NAME	DATE
DRAWN	Matt	05/11/18
APPROVED BY	Chris	05/11/18
SCALE	1:3	05/11/18
WEIGHT	1.695kg	05/11/18

UNLESS OTHERWISE SPECIFIED DIMENSIONS ARE IN MILLIMETRES

Unspecified Tolerances  
 Machining ± 0.25mm  
 Fabrication ± 1mm



BIL Group Ltd, Porte Marsh Road, Calne  
 Wiltshire, SN11 9BW, United Kingdom  
 Tel +44 (0)1249 822 222 Fax: +44 (0)1249 822 300  
 www.bilgroup.co.uk

TITLE

BZPH125RNBSWB

SIZE	DWG NO.	REV
A4	BILCW03BZPH125RNBSWB_01	1

FILE NAME BILCW03BZPH125RNBSWB\_01.PDF SHEET 1 OF 1