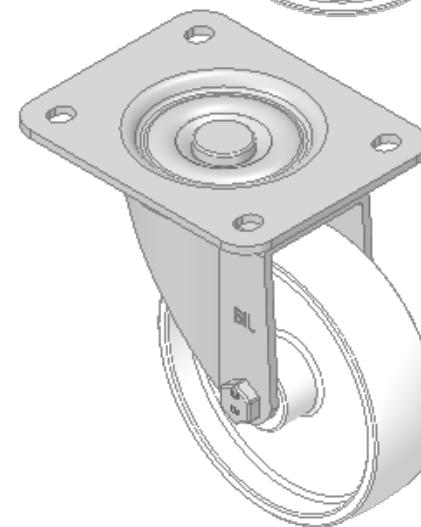
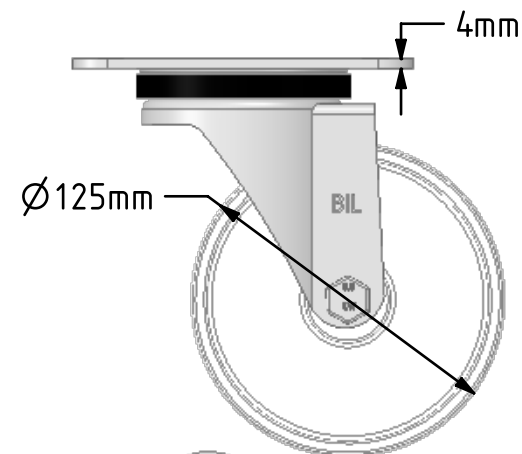
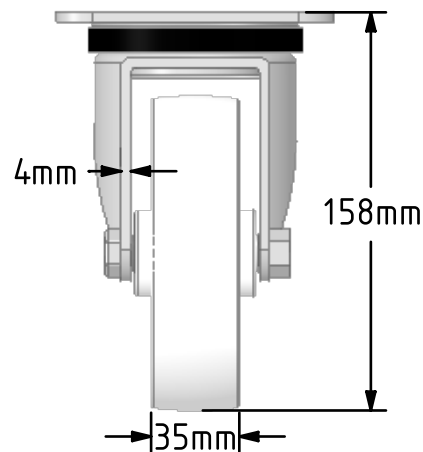
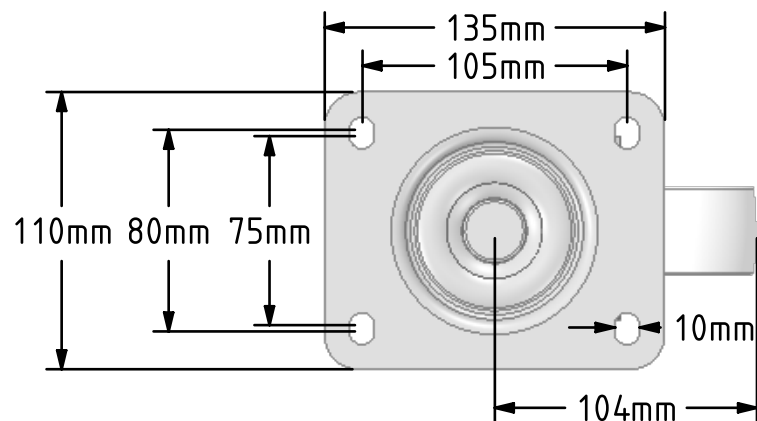


DRAWING DISCLAIMER  
 COPYRIGHT OF THIS DRAWING IS RESERVED BY BIL GROUP LTD. IT IS ISSUED ON CONDITION THAT IT IS NOT REPRODUCED, COPIED, OR DISCLOSED TO A THIRD PARTY EITHER WHOLLY OR IN PART WITHOUT THE CONSENT IN WRITING OF BIL GROUP LTD.



Description:  
 BZPH125NYB

Pressed steel swivel castor, fitted with a top plate and a white nylon wheel with a roller bearing. Wheel diameter 125mm, tread width 35mm, top plate 135 x 110mm, bolt holes 105 x 80/75mm with a load capacity of 300kgs overall height 158mm



	NAME	DATE
DRAWN	Matt	01/11/18
APPROVED BY	Chris	01/11/18
SCALE	1:3	01/11/18
WEIGHT	1.273kg	01/11/18

 BIL Group Ltd, Porte Marsh Road, Calne  
 Wiltshire, SN11 9BW, United Kingdom  
 Tel +44 (0)1249 822 222 Fax: +44 (0)1249 822 300  
 www.bilgroup.co.uk

TITLE		REV
BZPH125NYB		1
SIZE	DWG NO.	REV
A4	BILCW03BZPH125NYB_01	1
FILE NAME	SHEET 1 OF 1	
BILCW03BZPH125NYB_01.PDF		

UNLESS OTHERWISE SPECIFIED DIMENSIONS ARE IN MILLIMETRES

Unspecified Tolerances  
 Machining ± 0.25mm  
 Fabrication ± 1mm