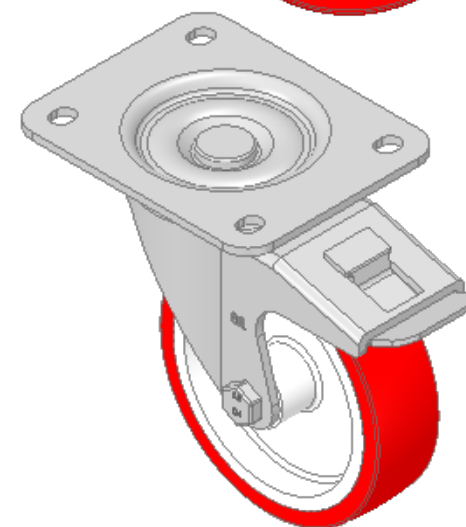
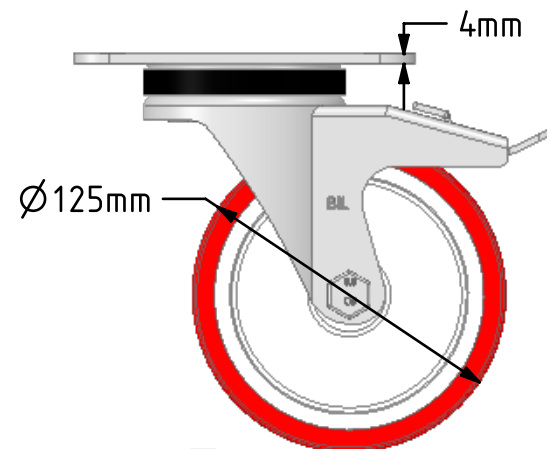
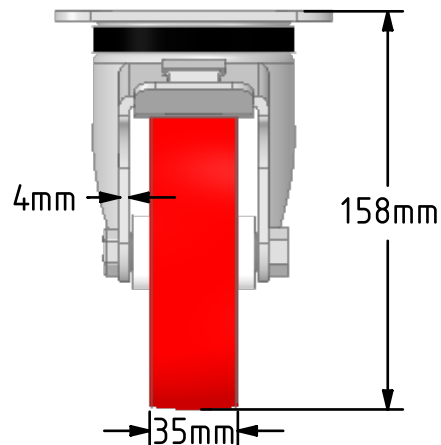
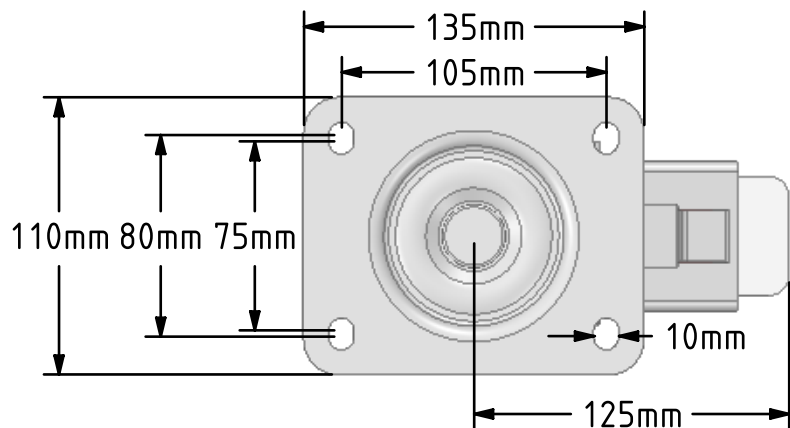


DRAWING DISCLAIMER
 COPYRIGHT OF THIS DRAWING IS RESERVED BY BIL GROUP LTD. IT IS ISSUED ON CONDITION THAT IT IS NOT REPRODUCED, COPIED, OR DISCLOSED TO A THIRD PARTY EITHER WHOLLY OR IN PART WITHOUT THE CONSENT IN WRITING OF BIL GROUP LTD.



Description:
 BZPH125NPSWB

Pressed steel swivel castor with a top plate fixing fitted with a red polyurethane on white nylon centred wheel with a plain bearing and total lock brake. Wheel diameter 125mm, tread width 35mm, overall height 158mm, top plate 135mm x 110mm, hole centres 105mm x 80mm. Load capacity 300kg.



	NAME	DATE
DRAWN	Matt	27/11/18
APPROVED BY	Chris	27/11/18
SCALE	1:3	27/11/18
WEIGHT	1.529kg	27/11/18

 BIL Group Ltd, Porte Marsh Road, Calne
 Wiltshire, SN11 9BW, United Kingdom
 Tel +44 (0)1249 822 222 Fax: +44 (0)1249 822 300
 www.bilgroup.co.uk

TITLE		REV
BZPH125NPSWB		1
SIZE	DWG NO.	FILE NAME
A4	BILCW03BZPH125NPSWB_01	BILCW03BZPH125NPSWB_01.PDF
UNLESS OTHERWISE SPECIFIED DIMENSIONS ARE IN MILLIMETRES		SHEET 1 OF 1
Unspecified Tolerances Machining ± 0.25mm Fabrication ± 1mm		