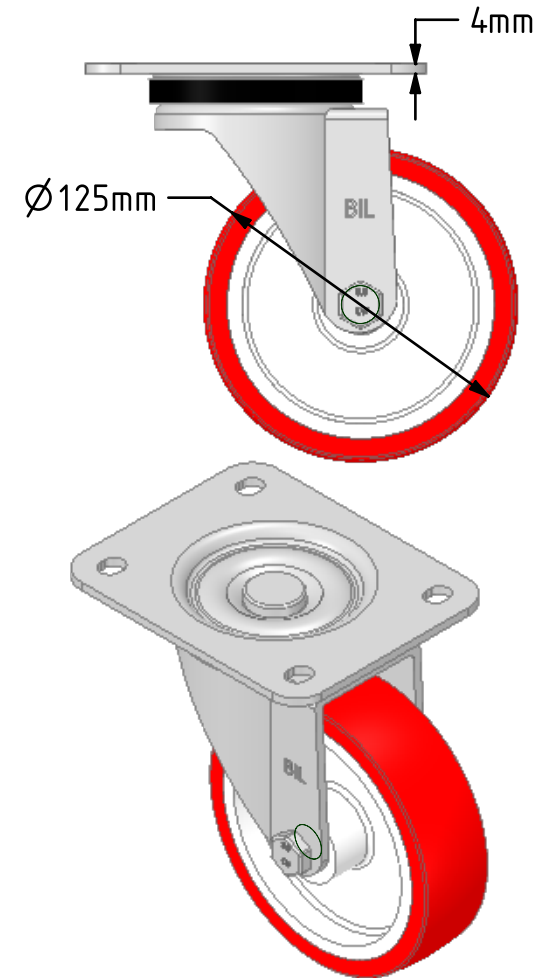
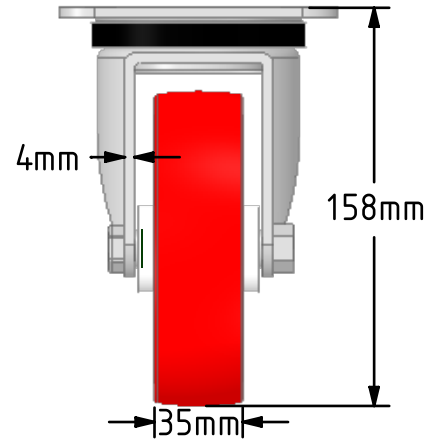
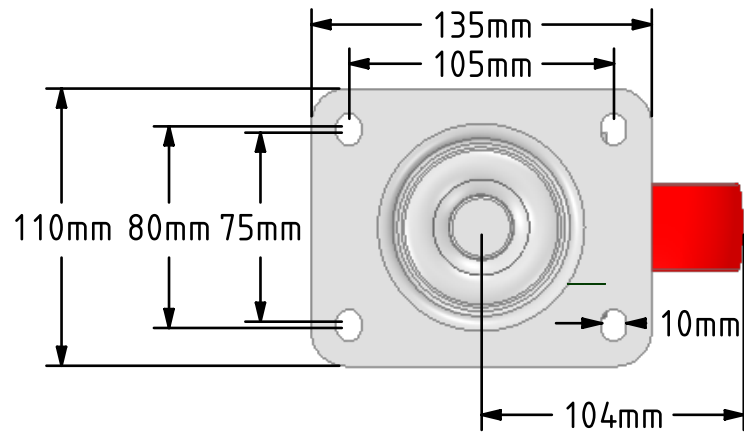


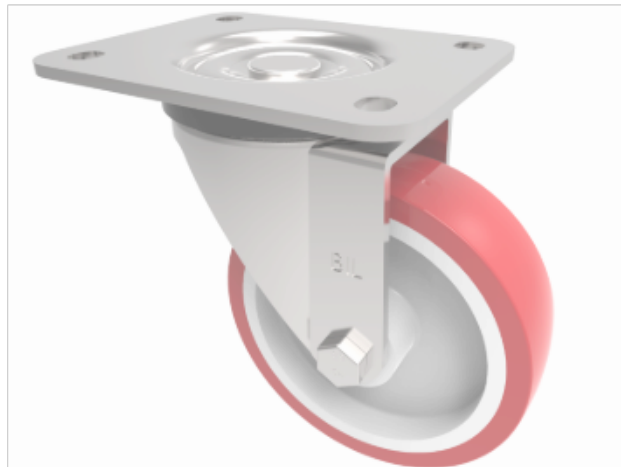
**DRAWING DISCLAIMER**


COPYRIGHT OF THIS DRAWING IS RESERVED BY BIL GROUP LTD. IT IS ISSUED ON CONDITION THAT IT IS NOT REPRODUCED, COPIED, OR DISCLOSED TO A THIRD PARTY EITHER WHOLLY OR IN PART WITHOUT THE CONSENT IN WRITING OF BIL GROUP LTD.

**Description:**

BZPH125NPB

Pressed steel swivel castor with a top plate fixing fitted with a red polyurethane on white nylon centred wheel with a roller bearing. Wheel diameter 125mm, tread width 35mm, overall height 158mm, top plate 135mm x 110mm, hole centres 105mm x 80mm. Load capacity 300kg.



	NAME	DATE	<div><p>BIL Group Ltd, Porte Marsh Road, Calne Wiltshire, SN11 9BW, United Kingdom Tel +44 (0)1249 822 222 Fax: +44 (0)1249 822 300 www.bilgroup.co.uk</p></div>		
DRAWN	Matt	26/11/18			
APPROVED BY	Chris	26/11/18			
SCALE	1:3	26/11/18			
WEIGHT	1.376kg	26/11/18			
<div>UNLESS OTHERWISE SPECIFIED DIMENSIONS ARE IN MILLIMETRES</div> <div>Unspecified Tolerances Machining ± 0.25mm Fabrication ± 1mm</div>			TITLE		
			BZPH125NPB		
			SIZE	DWG NO.	REV
			A4	BILCW03BZPH125NPB__01	1
			FILE NAME BILCW03BZPH125NPB__01.PDF		
			SHEET 1 OF 1		