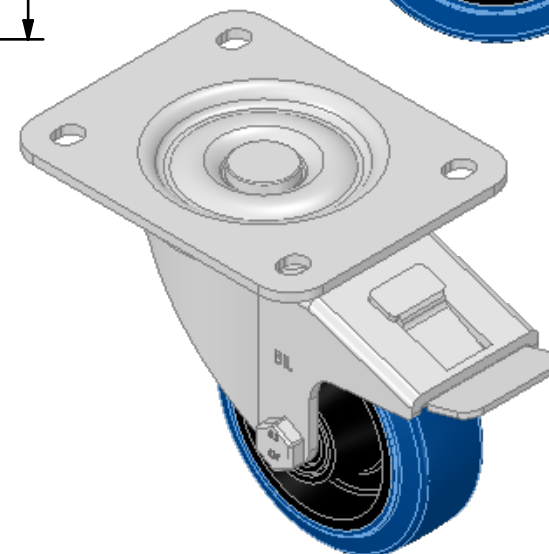
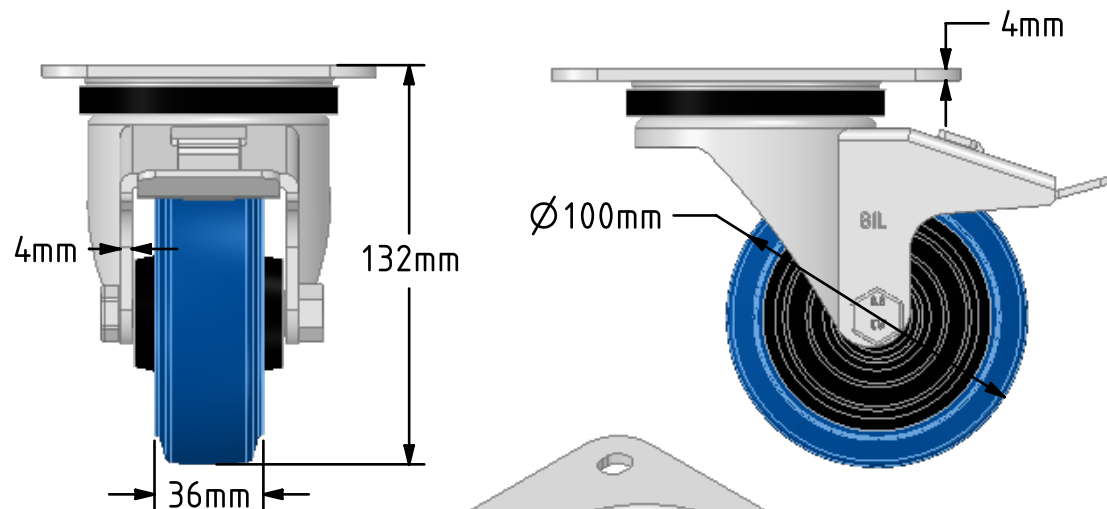
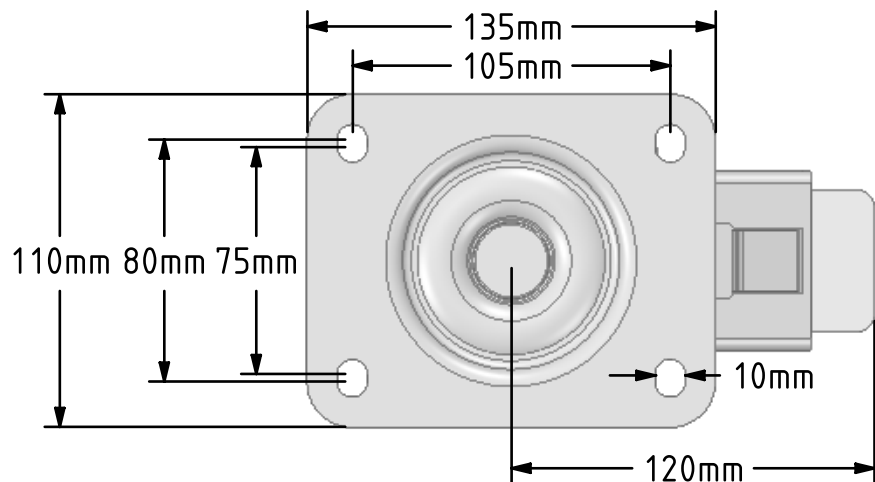
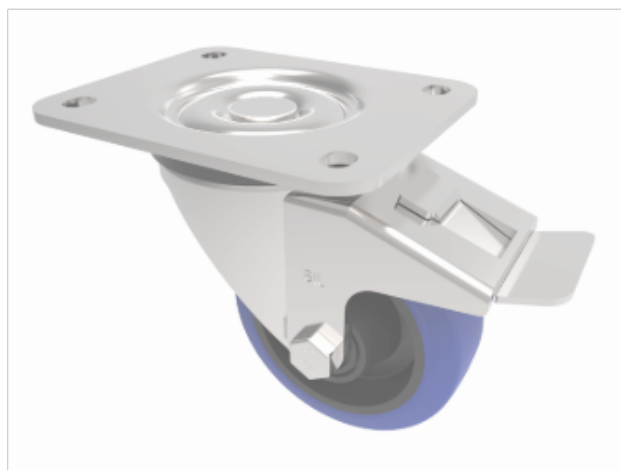


DRAWING DISCLAIMER
 COPYRIGHT OF THIS DRAWING IS RESERVED BY BIL GROUP LTD. IT IS ISSUED ON CONDITION THAT IT IS NOT REPRODUCED, COPIED, OR DISCLOSED TO A THIRD PARTY EITHER WHOLLY OR IN PART WITHOUT THE CONSENT IN WRITING OF BIL GROUP LTD.



Description:
 BZPH100SRNBSWB

Pressed steel swivel castor with a top plate fixing fitted with a blue 65 shore A elastic rubber on nylon centred wheel with a roller bearing and a total lock brake. Wheel diameter 100mm, tread width 36mm, overall height 132mm, top plate 135mm x 110mm, hole centres 105mm x 80/75mm. Load capacity 200kg. REACH compliant also PAH-Free rubber to confirm to EU-directive 2005/69/EC



	NAME	DATE
DRAWN	Matt	08/11/18
APPROVED BY	Tim W	08/11/18
SCALE	2:5	08/11/18
WEIGHT	1.443kg	08/11/18

BIL BIL Group Ltd, Porte Marsh Road, Calne
 Wiltshire, SN11 9BW, United Kingdom
 Tel +44 (0)1249 822 222 Fax: +44 (0)1249 822 300
 www.bilgroup.co.uk

TITLE		REV
BZPH100SRNBSWB		1
SIZE	DWG NO.	
A4	BILCW03BZPH100SRNBSWB_01	

UNLESS OTHERWISE SPECIFIED DIMENSIONS ARE IN MILLIMETRES
 Unspecified Tolerances
 Machining ± 0.25mm
 Fabrication ± 1mm

FILE NAME BILCW03BZPH100SRNBSWB_01.PDF SHEET 1 OF 1