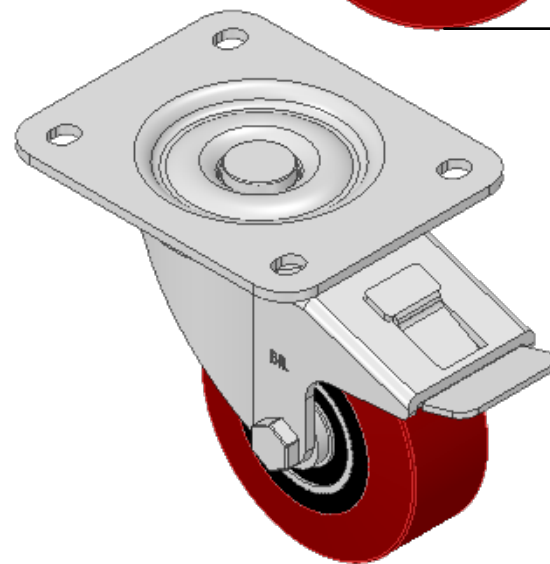
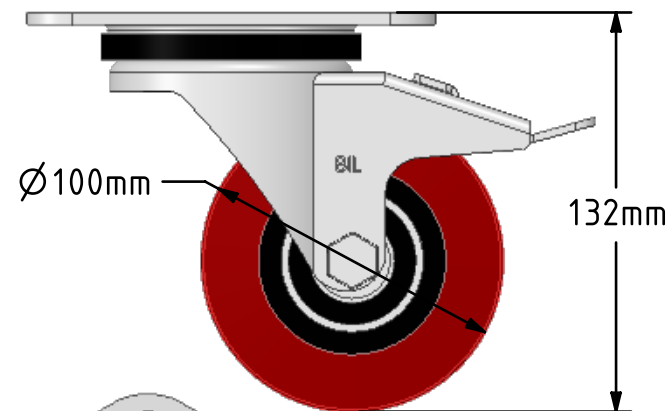
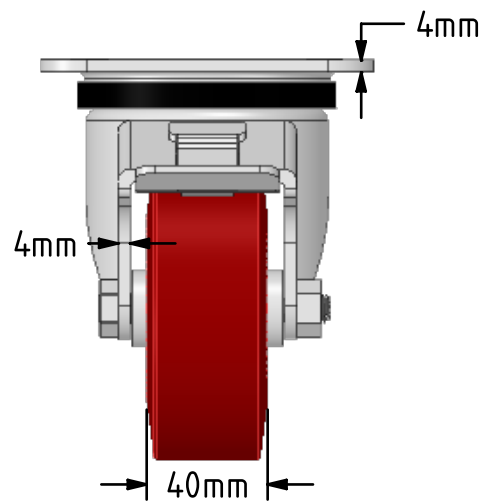
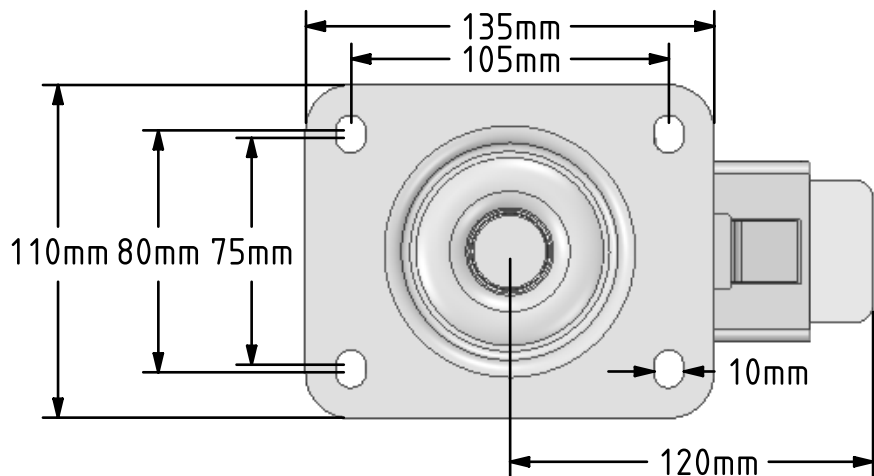


**DRAWING DISCLAIMER**  
 COPYRIGHT OF THIS DRAWING IS RESERVED BY BIL GROUP LTD. IT IS ISSUED ON CONDITION THAT IT IS NOT REPRODUCED, COPIED, OR DISCLOSED TO A THIRD PARTY EITHER WHOLLY OR IN PART WITHOUT THE CONSENT IN WRITING OF BIL GROUP LTD.



**Description:**  
 BZPH100PTBJSWB

Pressed steel swivel castor with a top plate fixing fitted with a polyurethane wheel on cast iron centre with ball bearings and total lock brake. Wheel diameter 100mm, tread width 40mm, overall height 132mm, top plate 135mm x 110mm, hole centres 105mm x 80/75mm. Load capacity 300kg.



	NAME	DATE
DRAWN	Matt	14/12/18
APPROVED BY	Chris	14/12/18
SCALE	2:5	14/12/18
WEIGHT	2.033kg	14/12/18

UNLESS OTHERWISE SPECIFIED DIMENSIONS ARE IN MILLIMETRES

Unspecified Tolerances  
 Machining ± 0.25mm  
 Fabrication ± 1mm



BIL Group Ltd, Porte Marsh Road, Calne  
 Wiltshire, SN11 9BW, United Kingdom  
 Tel +44 (0)1249 822 222 Fax: +44 (0)1249 822 300  
 www.bilgroup.co.uk

TITLE

**BZPH100PTBJSWB**

SIZE DWG NO.

A4

BILCW03BZPH100PTBJSWB\_01

REV

1

FILE NAME BILCW03BZPH100PTBJSWB\_01.PDF SHEET 1 OF 1