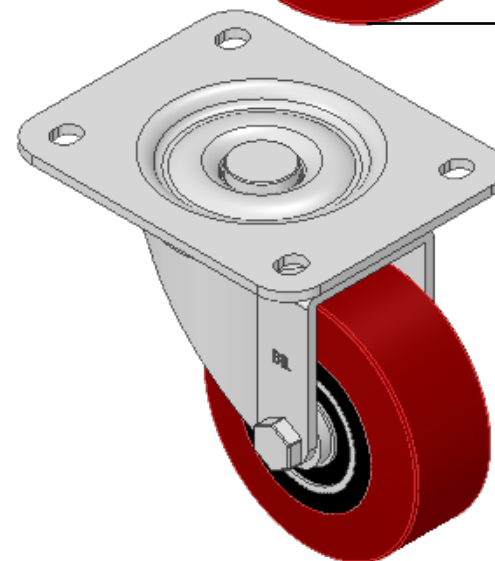
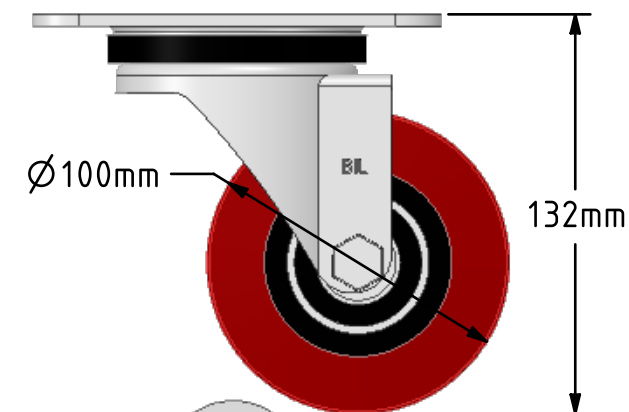
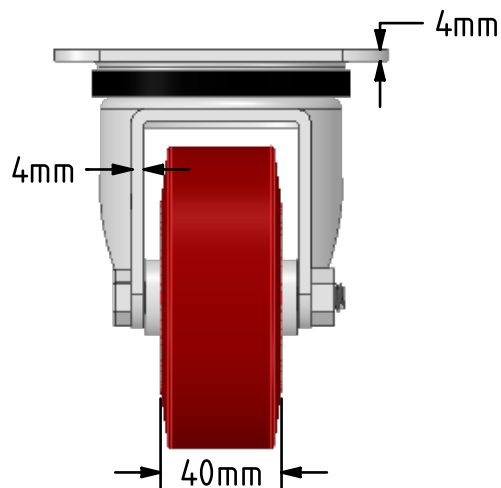
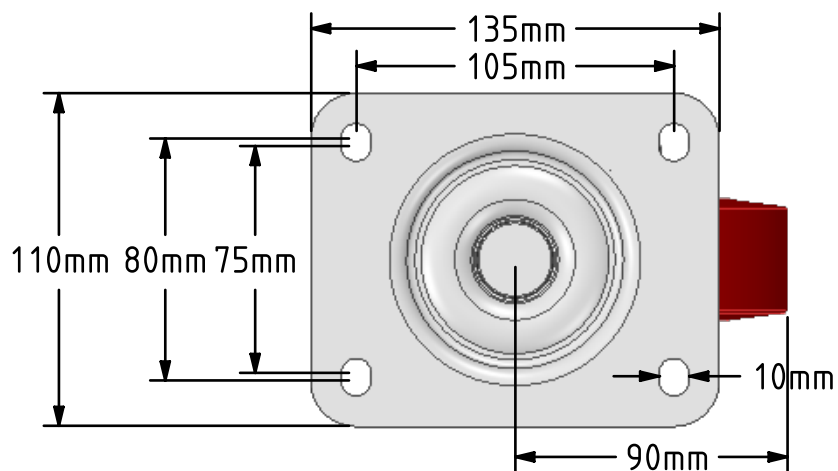


DRAWING DISCLAIMER
 COPYRIGHT OF THIS DRAWING IS RESERVED BY BIL GROUP LTD. IT IS ISSUED ON CONDITION THAT IT IS NOT REPRODUCED, COPIED, OR DISCLOSED TO A THIRD PARTY EITHER WHOLLY OR IN PART WITHOUT THE CONSENT IN WRITING OF BIL GROUP LTD.



Description:
 BZPH100PTBJ

Pressed steel swivel castor with a top plate fixing fitted with a brown polyurethane tyre cast iron centred wheel with ball bearings. Wheel diameter 100mm, tread width 40mm, overall height 132mm, top plate 135mm x 110mm, hole centres 105mm x 80/75mm. Load capacity 300kg.



	NAME	DATE
DRAWN	Matt	14/12/18
APPROVED BY	Chris	14/12/18
SCALE	2:5	14/12/18
WEIGHT	1.863kg	14/12/18

UNLESS OTHERWISE SPECIFIED DIMENSIONS ARE IN MILLIMETRES
 Unspecified Tolerances
 Machining ± 0.25mm
 Fabrication ± 1mm

 BIL Group Ltd, Porte Marsh Road, Calne Wiltshire, SN11 9BW, United Kingdom
 Tel +44 (0)1249 822 222 Fax: +44 (0)1249 822 300
 www.bilgroup.co.uk

TITLE
BZPH100PTBJ

SIZE	DWG NO.	REV
A4	BILCW03BZPH100PTBJ_01	1

FILE NAME BILCW03BZPH100PTBJ_01.PDF SHEET 1 OF 1