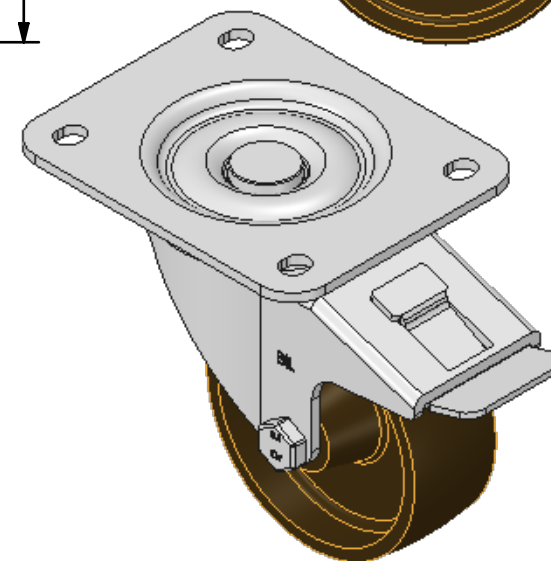
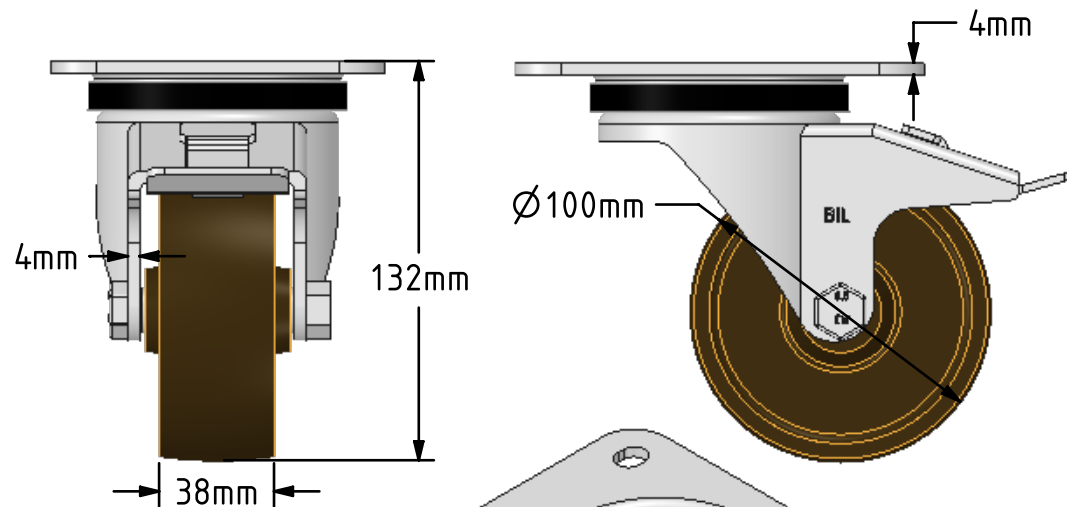
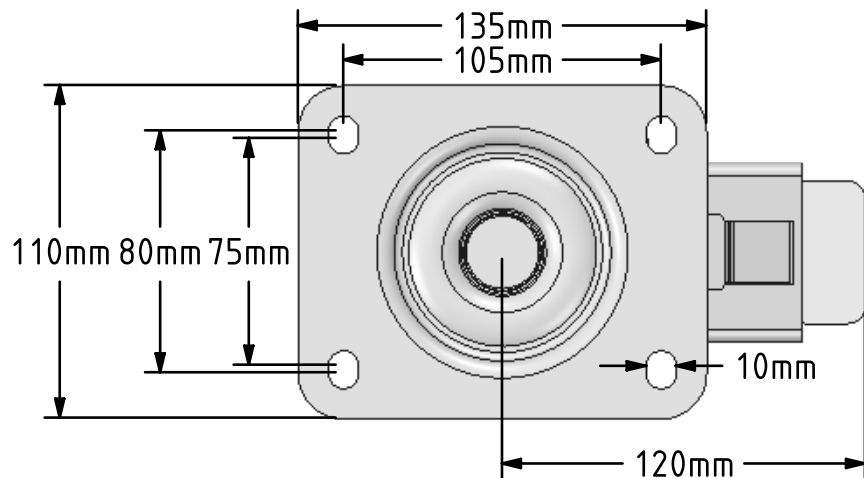


DRAWING DISCLAIMER
 COPYRIGHT OF THIS DRAWING IS RESERVED BY BIL GROUP LTD. IT IS ISSUED ON CONDITION THAT IT IS NOT REPRODUCED, COPIED, OR DISCLOSED TO A THIRD PARTY EITHER WHOLLY OR IN PART WITHOUT THE CONSENT IN WRITING OF BIL GROUP LTD.



Description:
 BZPH100CISWB

Pressed steel swivel castor with a top plate fixing fitted with a cast iron wheel with a plain bore and a total lock brake. Wheel diameter 100mm, tread width 38mm, overall height 132mm, top plate 135mm x 110mm, hole centres 105mm x 80mm. Load capacity 270kg



	NAME	DATE
DRAWN	Matt	25/04/18
APPROVED BY	Chris	25/04/18
SCALE	2:5	25/04/18
WEIGHT	2.079kg	25/04/18

 BIL Group Ltd, Porte Marsh Road, Calne
 Wiltshire, SN11 9BW, United Kingdom
 Tel +44 (0)1249 822 222 Fax: +44 (0)1249 822 300
 www.bilgroup.co.uk

TITLE		REV
BZPH100CISWB		1
SIZE	DWG NO.	
A4	BILCW03BZPH100CISWB_01	
FILE NAME	BILCW03BZPH100CISWB_01.PDF SHEET 1 OF 1	

UNLESS OTHERWISE SPECIFIED DIMENSIONS ARE IN MILLIMETRES

Unspecified Tolerances
 Machining ± 0.25mm
 Fabrication ± 1mm