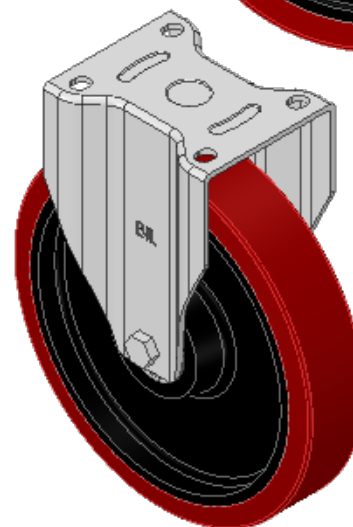
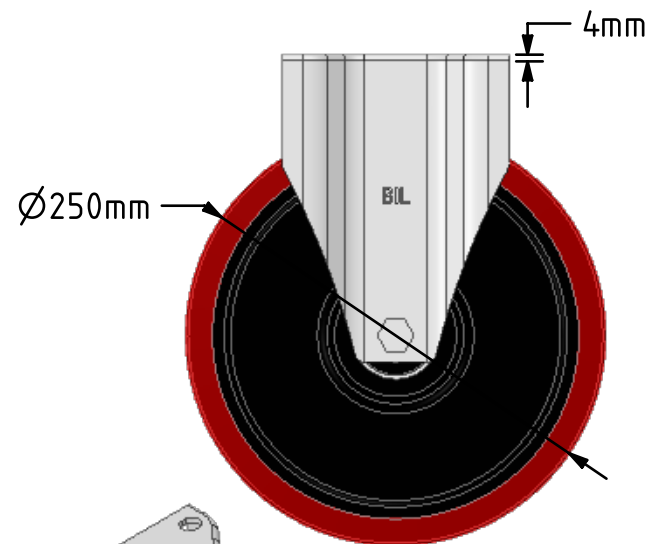
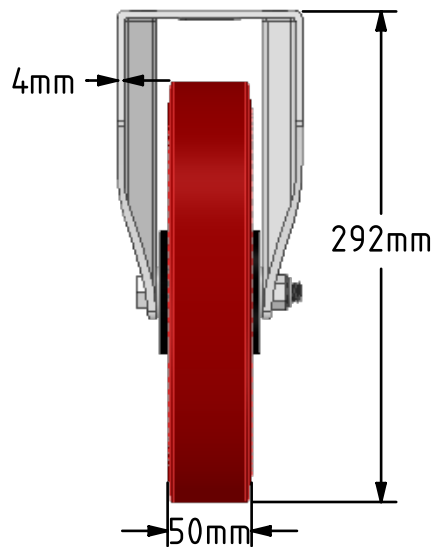
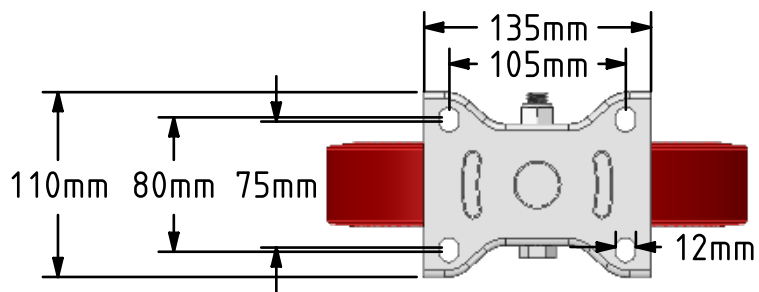
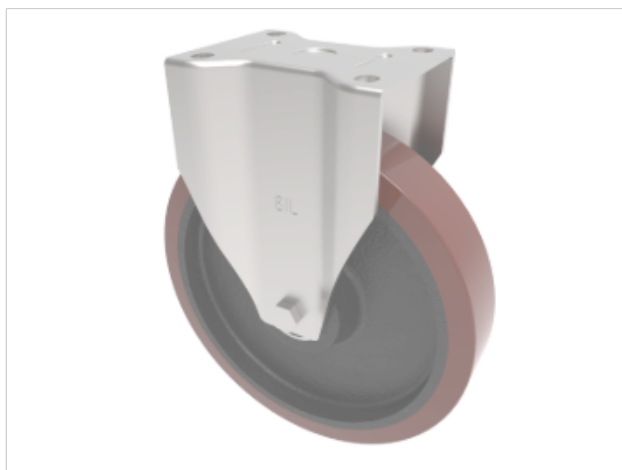


DRAWING DISCLAIMER
 COPYRIGHT OF THIS DRAWING IS RESERVED BY BIL GROUP LTD. IT IS ISSUED ON CONDITION THAT IT IS NOT REPRODUCED, COPIED, OR DISCLOSED TO A THIRD PARTY EITHER WHOLLY OR IN PART WITHOUT THE CONSENT IN WRITING OF BIL GROUP LTD.



Description:
 BZPF250PTBJ

Pressed steel fixed castor with a flat plate fixing fitted with a brown polyurethane on cast iron wheel with a ball bearing. Wheel diameter 250mm, tread width 50mm, overall height 292mm, plate size 135mm x 110mm, hole centres 105mm x 80/75mm. Load capacity 800kg.



	NAME	DATE
DRAWN	Matt	28/02/19
APPROVED BY	Chris	28/02/19
SCALE	2.9	28/02/19
WEIGHT	7.815kg	28/02/19

UNLESS OTHERWISE SPECIFIED DIMENSIONS ARE IN MILLIMETRES

Unspecified Tolerances
 Machining ± 0.25mm
 Fabrication ± 1mm



BIL Group Ltd, Porte Marsh Road, Calne
 Wiltshire, SN11 9BW, United Kingdom
 Tel +44 (0)1249 822 222 Fax: +44 (0)1249 822 300
 www.bilgroup.co.uk

TITLE

BZPF250PTBJ

SIZE DWG NO.
 A4 BILCW03BZPF250PTBJ_01

REV
 1

FILE NAME BILCW03BZPF250PTBJ_01.PDF SHEET 1 OF 1