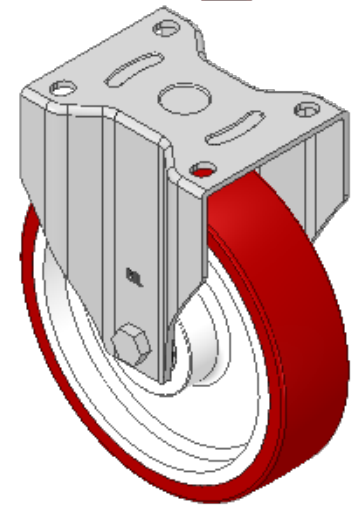
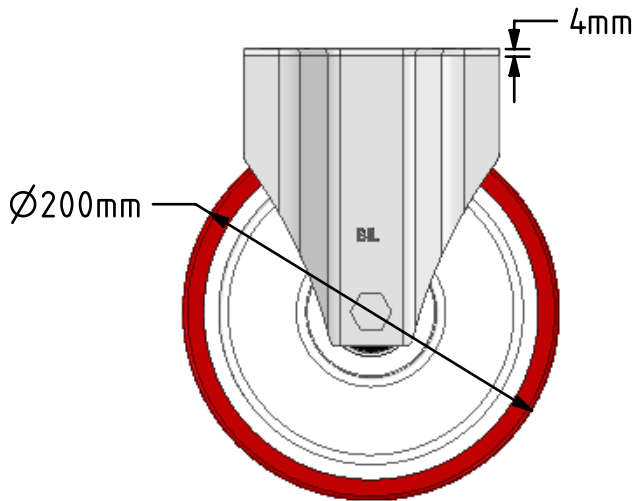
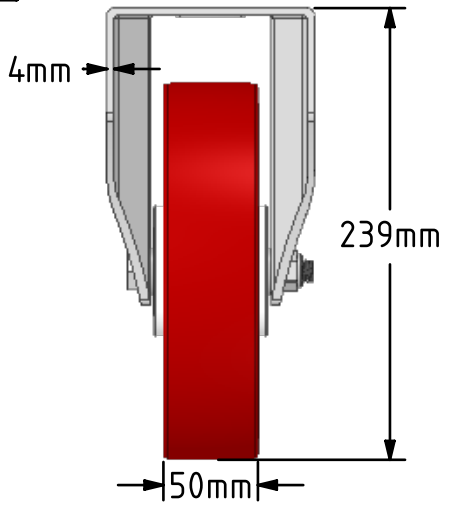
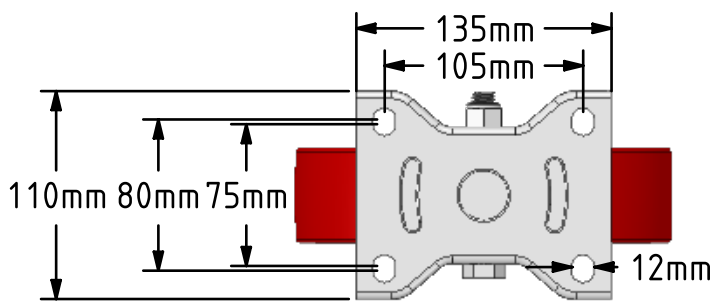
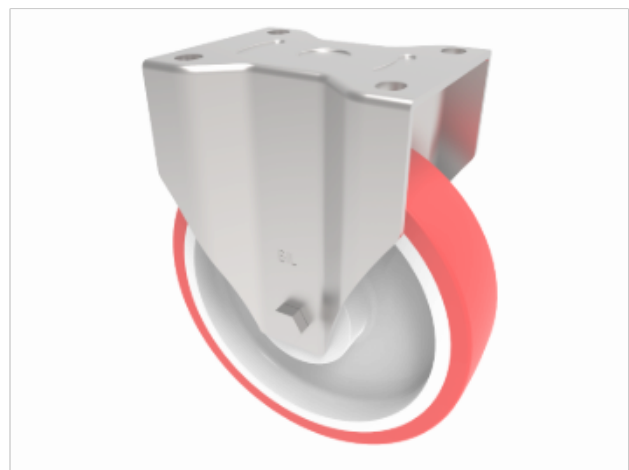



DRAWING DISCLAIMER
 COPYRIGHT OF THIS DRAWING IS RESERVED BY BIL GROUP LTD. IT IS ISSUED ON CONDITION THAT IT IS NOT REPRODUCED, COPIED, OR DISCLOSED TO A THIRD PARTY EITHER WHOLLY OR IN PART WITHOUT THE CONSENT IN WRITING OF BIL GROUP LTD.



Description:
BZPF200NPBJ
 Pressed steel fixed castor with a top plate fixing fitted with a red polyurethane on white nylon wheel with ball bearings. Wheel diameter 200mm, tread width 50mm, overall height 239mm, top plate 135mm x 110mm, hole centres 105mm x 80/75mm. Load capacity 700kg.



	NAME	DATE	 BIL Group Ltd, Porte Marsh Road, Calne Wiltshire, SN11 9BW, United Kingdom Tel +44 (0)1249 822 222 Fax: +44 (0)1249 822 300 www.bilgroup.co.uk	
DRAWN	Matt	14/02/19		
APPROVED BY	Chris	14/02/19		
SCALE	1:4	14/02/19		
WEIGHT	2.566kg	14/02/19	TITLE	
UNLESS OTHERWISE SPECIFIED DIMENSIONS ARE IN MILLIMETRES			BZPF200NPBJ	
Unspecified Tolerances Machining ± 0.25mm Fabrication ± 1mm			SIZE A4	DWG NO. BILCW03BZPF200NPBJ_02
			REV 2	FILE NAME BILCW03BZPF200NPBJ_02.PDF
			SHEET 1 OF 1	