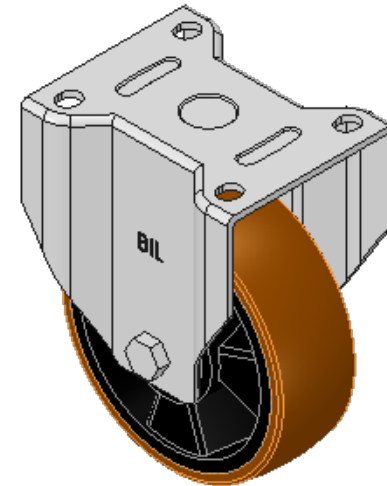
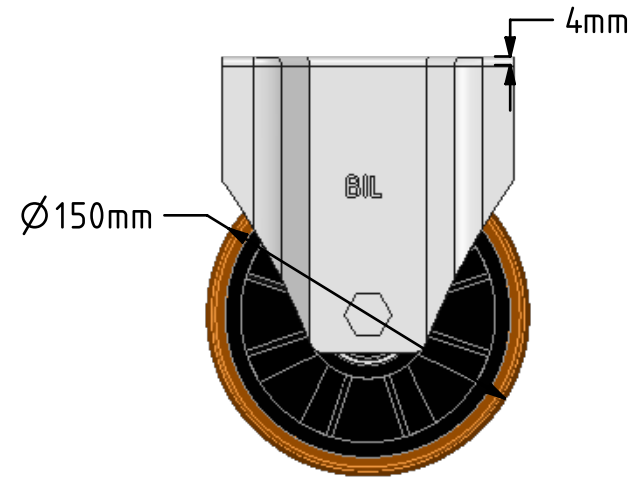
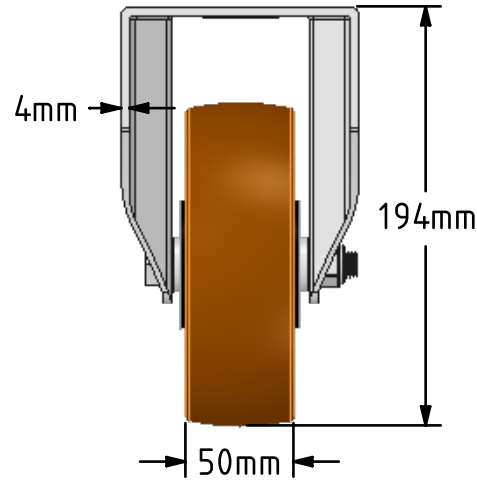
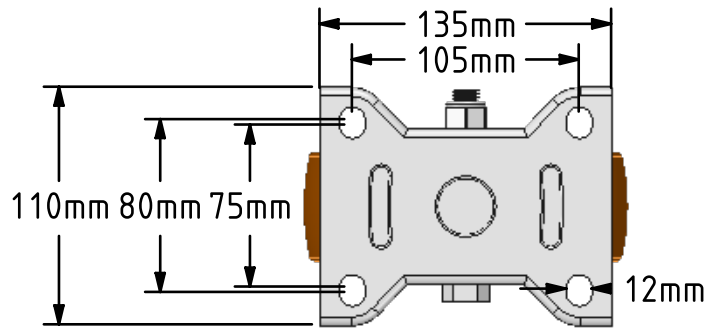



DRAWING DISCLAIMER
 COPYRIGHT OF THIS DRAWING IS RESERVED BY BIL GROUP LTD. IT IS ISSUED ON CONDITION THAT IT IS NOT REPRODUCED, COPIED, OR DISCLOSED TO A THIRD PARTY EITHER WHOLLY OR IN PART WITHOUT THE CONSENT IN WRITING OF BIL GROUP LTD.



Description:
 BZPF150XPBJ

Pressed steel fixed castor with a flat plate fixing fitted with a brown polyurethane tread on black nylon centred wheel with ball bearings. Wheel diameter 150mm, tread width 50mm, overall height 194mm, plate size 135mm x 100mm, hole centres 105mm x 80mm. Load capacity 600kg.



	NAME	DATE	 BIL Group Ltd, Porte Marsh Road, Calne Wiltshire, SN11 9BW, United Kingdom Tel +44 (0)1249 822 222 Fax: +44 (0)1249 822 300 www.bilgroup.co.uk
DRAWN	Matt	23/02/18	
APPROVED BY	Chris	23/02/18	
SCALE	2:7	23/02/18	
WEIGHT	2.042kg	23/02/18	TITLE
UNLESS OTHERWISE SPECIFIED DIMENSIONS ARE IN MILLIMETRES Unspecified Tolerances Machining ± 0.25mm Fabrication ± 1mm			BZPF150XPBJ
SIZE		DWG NO.	REV
A4		BILCW03BZPF150XPBJ_01	1
FILE NAME		SHEET 1 OF 1	
BILCW03BZPF150XPBJ_01.PDF			