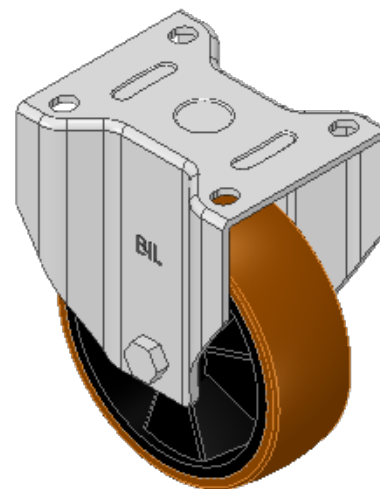
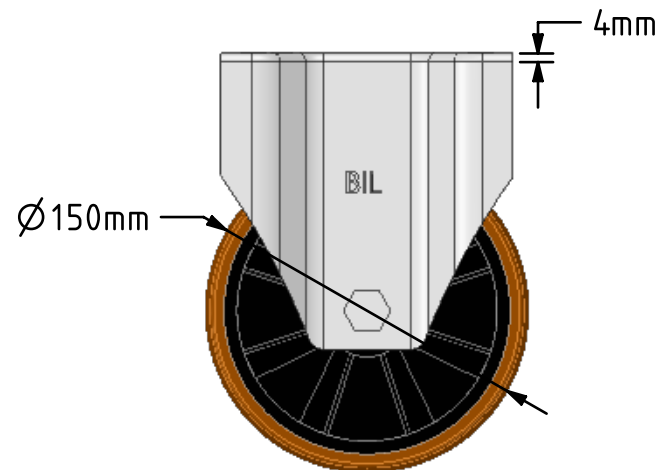
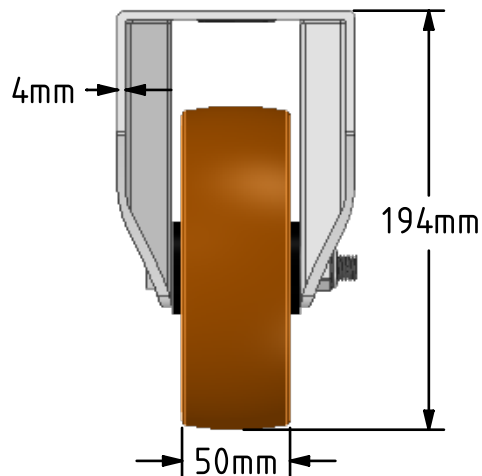
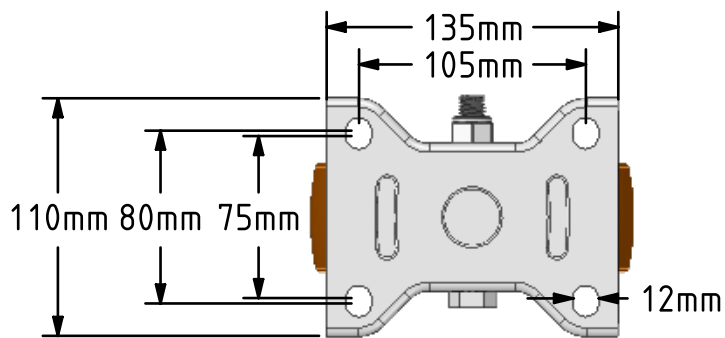
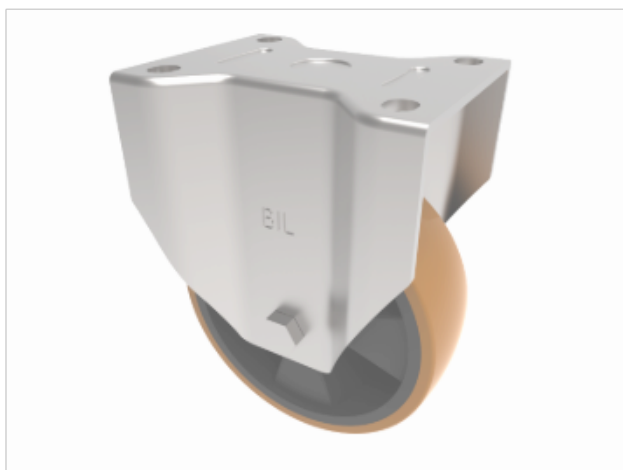


DRAWING DISCLAIMER
 COPYRIGHT OF THIS DRAWING IS RESERVED BY BIL GROUP LTD. IT IS ISSUED ON CONDITION THAT IT IS NOT REPRODUCED, COPIED, OR DISCLOSED TO A THIRD PARTY EITHER WHOLLY OR IN PART WITHOUT THE CONSENT IN WRITING OF BIL GROUP LTD.



Description:
BZPF150XPNB

Pressed steel fixed castor with a flat plate fixing fitted with a brown polyurethane tyre on black nylon centred wheel with roller bearings. Wheel diameter 150mm, tread width 50mm, overall height 194mm, plate size 135mm x 110mm, hole centres 105mm x 80/75mm. Load capacity 600kg.



| | NAME | DATE |
|-------------|---------|----------|
| DRAWN | Matt | 20/02/19 |
| APPROVED BY | Tim W | 20/02/19 |
| SCALE | 2:7 | 20/02/19 |
| WEIGHT | 1.904kg | 20/02/19 |



BIL Group Ltd, Porte Marsh Road, Calne
 Wiltshire, SN11 9BW, United Kingdom
 Tel +44 (0)1249 822 222 Fax: +44 (0)1249 822 300
 www.bilgroup.co.uk

TITLE

BZPF150XPNB

UNLESS OTHERWISE SPECIFIED DIMENSIONS ARE IN MILLIMETRES

Unspecified Tolerances
 Machining ± 0.25mm
 Fabrication ± 1mm

| SIZE | DWG NO. | REV |
|-----------|---|-----|
| A4 | BILCW03BZPF150XPNB__01 | 1 |
| FILE NAME | BILCW03BZPF150XPNB__01.PDF SHEET 1 OF 1 | |