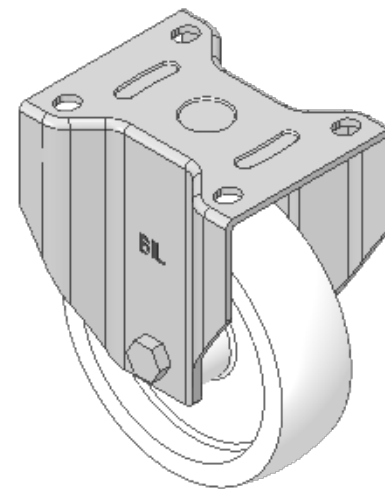
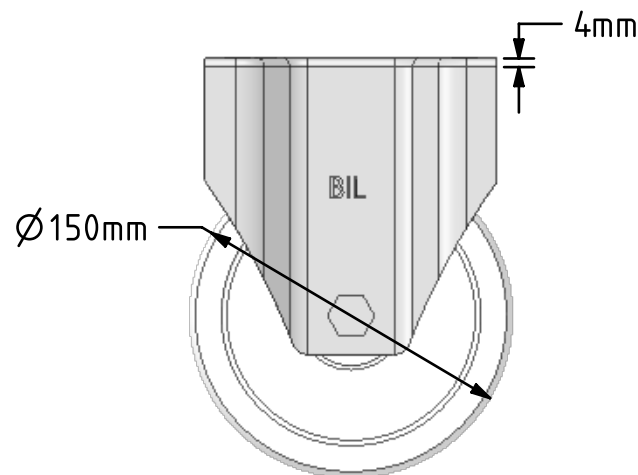
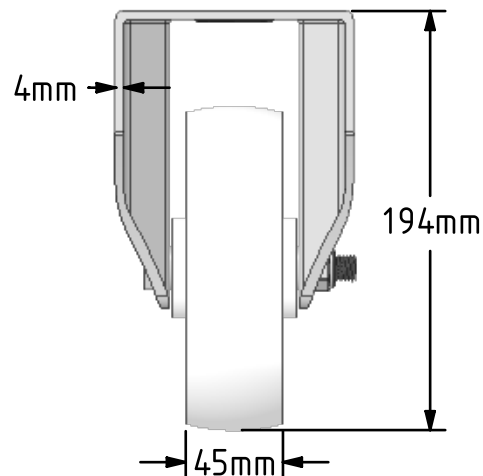
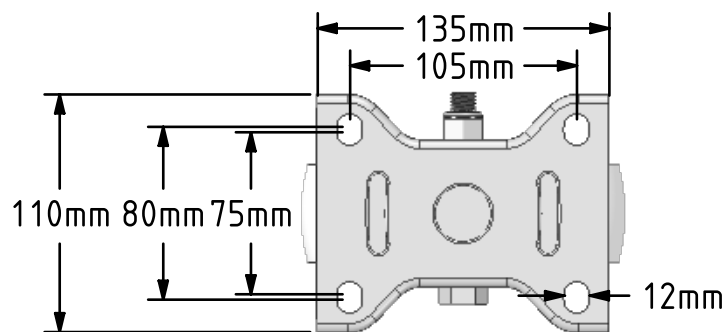
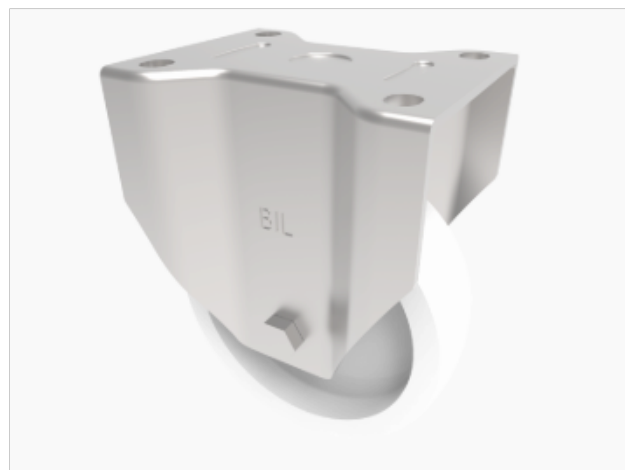



DRAWING DISCLAIMER  
 COPYRIGHT OF THIS DRAWING IS RESERVED BY BIL GROUP LTD. IT IS ISSUED ON CONDITION THAT IT IS NOT REPRODUCED, COPIED, OR DISCLOSED TO A THIRD PARTY EITHER WHOLLY OR IN PART WITHOUT THE CONSENT IN WRITING OF BIL GROUP LTD.



Description:  
 BZPF150NY

Pressed steel fixed castor with a flat plate fixing fitted with a white nylon wheel with a plain bore. Wheel diameter 150mm, tread width 45mm, overall height 194mm, plate size 135mm x 110mm, hole centres 105mm x 80/75mm, Load capacity 800kg.



	NAME	DATE	BIL Group Ltd, Porte Marsh Road, Calne Wiltshire, SN11 9BW, United Kingdom Tel +44 (0)1249 822 222 Fax: +44 (0)1249 822 300 www.bilgroup.co.uk	
DRAWN	Matt	08/01/19	 TITLE <b>BZPF150NY</b>	
APPROVED BY	Tim W	08/01/19		
SCALE	2:7	08/01/19		
WEIGHT	1.752kg	08/01/19		
UNLESS OTHERWISE SPECIFIED DIMENSIONS ARE IN MILLIMETRES			SIZE	DWG NO.
Unspecified Tolerances Machining ± 0.25mm Fabrication ± 1mm			A4	BILCW03BZPF150NY_01
			REV	1
FILE NAME			BILCW03BZPF150NY_01.PDF	SHEET 1 OF 1