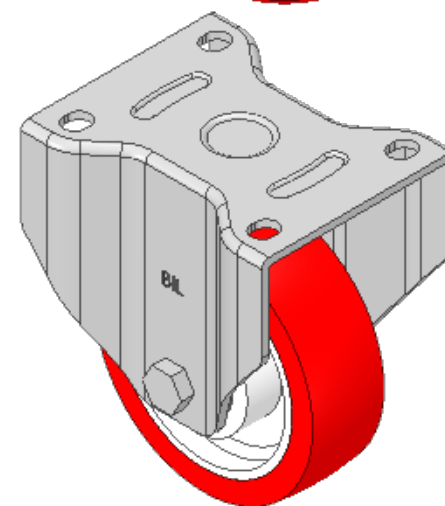
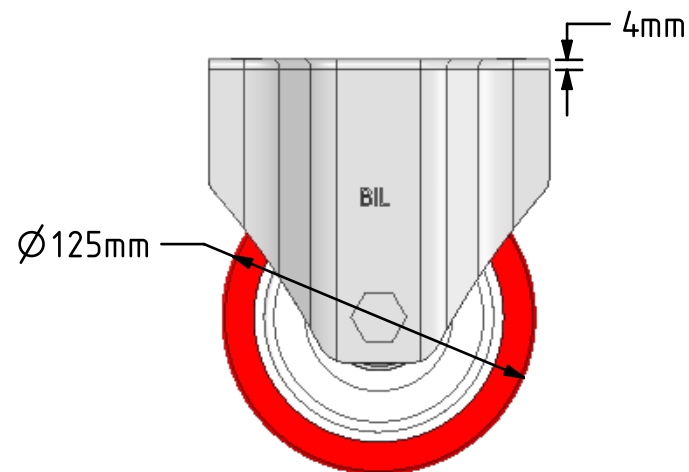
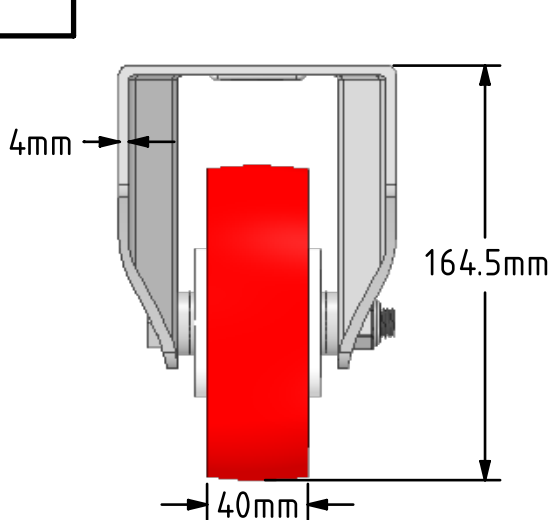
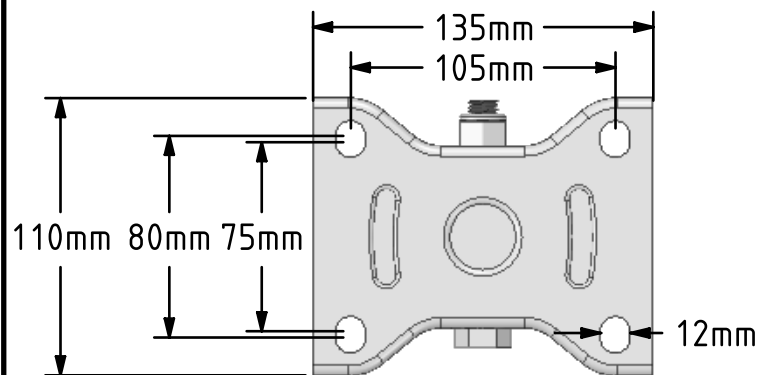


DRAWING DISCLAIMER
 COPYRIGHT OF THIS DRAWING IS RESERVED BY BIL GROUP LTD. IT IS ISSUED ON CONDITION THAT IT IS NOT REPRODUCED, COPIED, OR DISCLOSED TO A THIRD PARTY EITHER WHOLLY OR IN PART WITHOUT THE CONSENT IN WRITING OF BIL GROUP LTD.



Description:
 BZPF125NPBJ

Pressed steel fixed castor with a top plate fixing fitted with a red polyurethane tyre on white nylon centred ball bearing wheel. Wheel diameter 125mm, tread width 40mm, overall height 164mm, plate size 135mm x 110mm, hole centres 105mm x 80mm. Load capacity 300kg.



	NAME	DATE
DRAWN	Matt	13/02/19
APPROVED BY	Chris	13/02/19
SCALE	1:3	13/02/19
WEIGHT	1.709kg	13/02/19

 BIL Group Ltd, Porte Marsh Road, Calne
 Wiltshire, SN11 9BW, United Kingdom
 Tel +44 (0)1249 822 222 Fax: +44 (0)1249 822 300
 www.bilgroup.co.uk

TITLE
BZPF125NPBJ

UNLESS OTHERWISE SPECIFIED DIMENSIONS ARE IN MILLIMETRES
 Unspecified Tolerances
 Machining ± 0.25mm
 Fabrication ± 1mm

SIZE	DWG NO.	REV
A4	BILCW03BZPF125NPBJ__01	1
FILE NAME	BILCW03BZPF125NPBJ__01.PDF	SHEET 1 OF 1