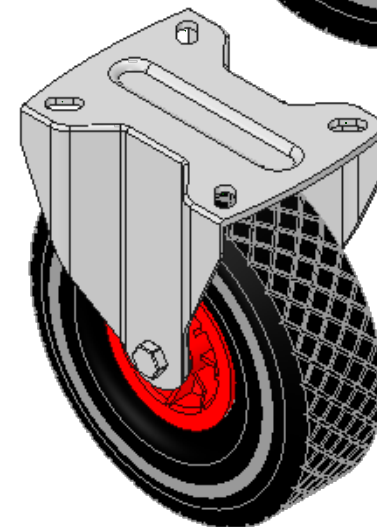
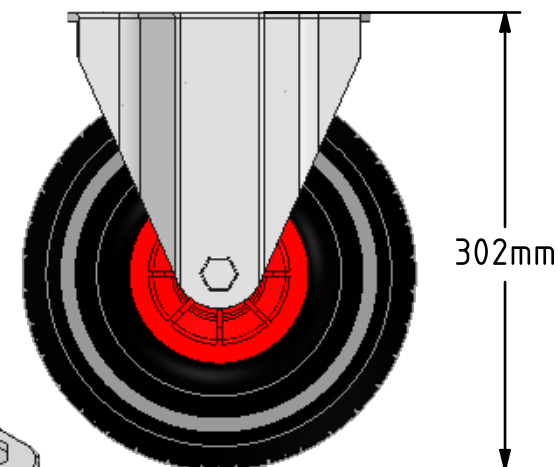
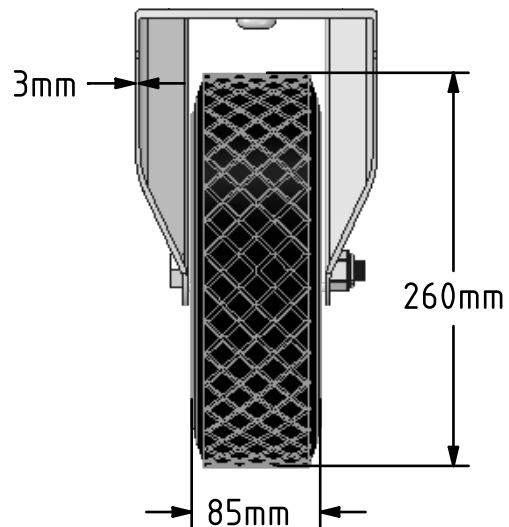
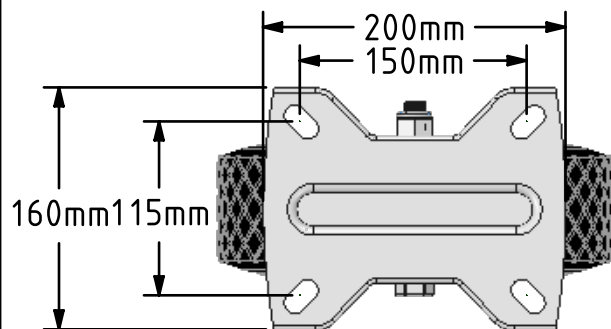
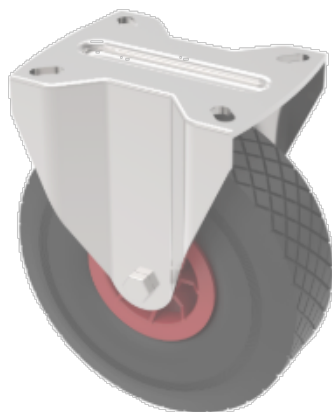


DRAWING DISCLAIMER

COPYRIGHT OF THIS DRAWING IS RESERVED BY BIL GROUP LTD. IT IS ISSUED ON CONDITION THAT IT IS NOT REPRODUCED, COPIED, OR DISCLOSED TO A THIRD PARTY EITHER WHOLLY OR IN PART WITHOUT THE CONSENT IN WRITING OF BIL GROUP LTD.

**Description:**
BZPCF260PPUBD

Pressed steel fixed castor with a flat plate fixing fitted with a black puncture proof diamond pattern tyre on red polypropylene centred wheel with a roller bearing. Wheel diameter 260mm, tread width 85mm, overall height 302mm, plate size 200mm x 160mm, hole centres 150mm x 115mm, Load capacity 150kg.



	NAME	DATE
DRAWN	Matt	26/01/17
APPROVED BY	Kevin	26/01/17
SCALE	1:5	26/01/17
WEIGHT	3.956kg	26/01/17

UNLESS OTHERWISE SPECIFIED DIMENSIONS ARE IN MILLIMETRES

Unspecified Tolerances
Machining $\pm 0.25\text{mm}$
Fabrication $\pm 1\text{mm}$



BIL Group Ltd, Porte Marsh Road, Calne
Wiltshire, SN11 9BW, United Kingdom
Tel +44 (0)1249 822 222 Fax: +44 (0)1249 822 300
www.bilgroup.co.uk

TITLE

BZPCF260PPUBD

SIZE DWG NO.
A4

BILCW03BZPCF260PPUBD_01

REV
1

FILE NAME BILCW03BZPCF260PPUBD_01.PDF

SHEET 1 OF 1