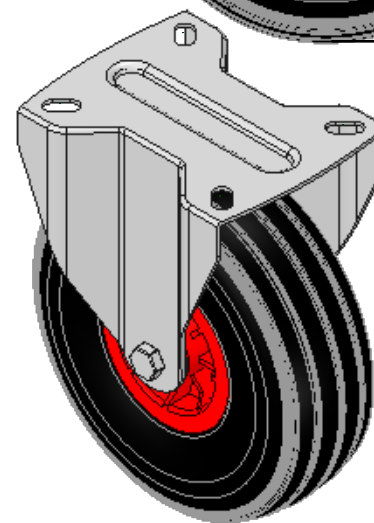
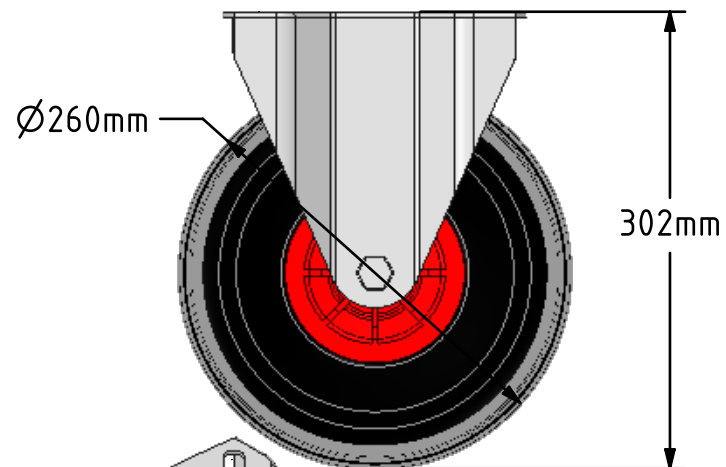
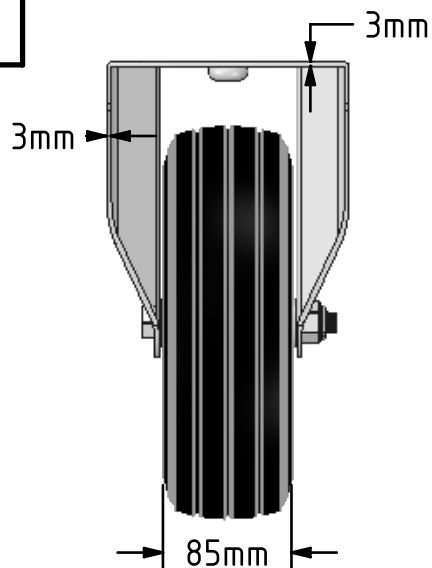
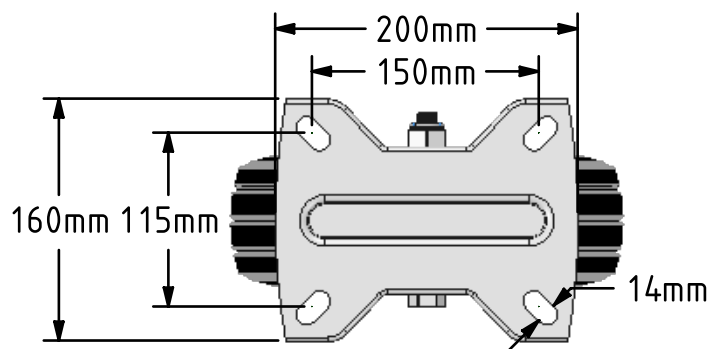
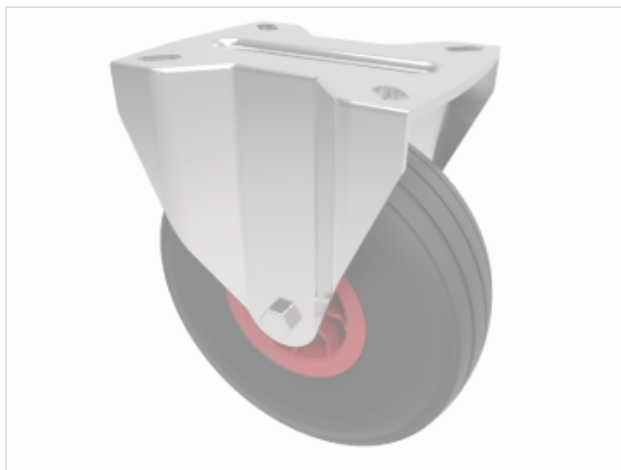


DRAWING DISCLAIMER
 COPYRIGHT OF THIS DRAWING IS RESERVED BY BIL GROUP LTD. IT IS ISSUED ON CONDITION THAT IT IS NOT REPRODUCED, COPIED, OR DISCLOSED TO A THIRD PARTY EITHER WHOLLY OR IN PART WITHOUT THE CONSENT IN WRITING OF BIL GROUP LTD.



Description:
 BZPCF260PPUB

Pressed steel fixed castor with a flat plate fixing fitted with a black puncture proof ribbed pattern tyre on red polypropylene centred wheel with a roller bearing. Wheel diameter 260mm, tread width 85mm, overall height 302mm, plate size 200mm x 160mm, hole centres 150mm x 115mm, Load capacity 120kg.



	NAME	DATE
DRAWN	Matt	07/08/18
APPROVED BY	Tim W	07/08/18
SCALE	1:5	07/08/18
WEIGHT	3.968kg	07/08/18

UNLESS OTHERWISE SPECIFIED DIMENSIONS ARE IN MILLIMETRES
 Unspecified Tolerances
 Machining ± 0.25mm
 Fabrication ± 1mm

 BIL Group Ltd, Porte Marsh Road, Calne Wiltshire, SN11 9BW, United Kingdom
 Tel +44 (0)1249 822 222 Fax: +44 (0)1249 822 300
 www.bilgroup.co.uk

TITLE
BZPCF260PPUB

SIZE A4	DWG NO. BILCW03BZPCF260PPUB_01	REV 1
------------	-----------------------------------	----------

FILE NAME BILCW03BZPCF260PPUB_01.PDF SHEET 1 OF 1