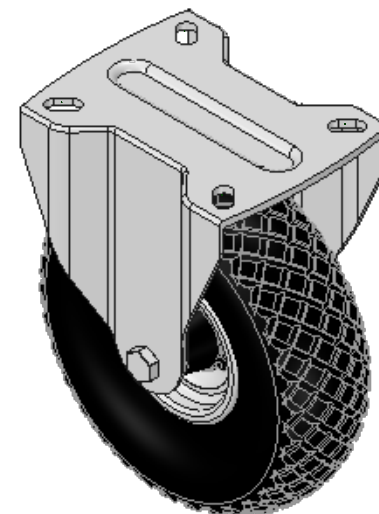
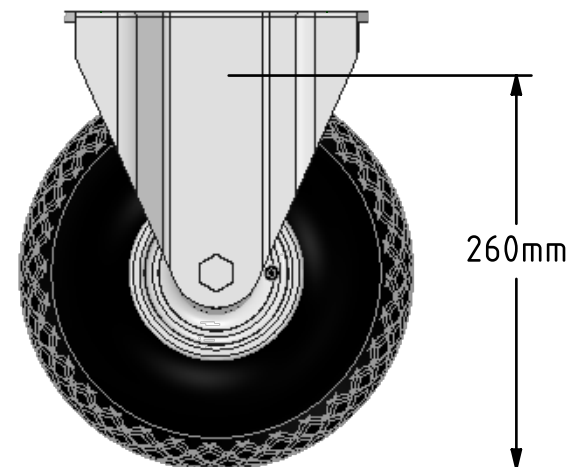
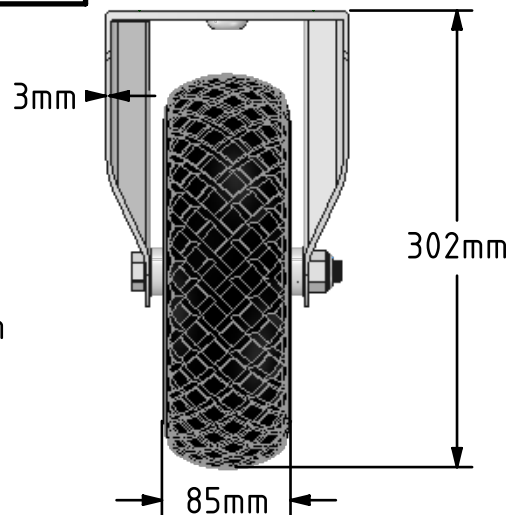
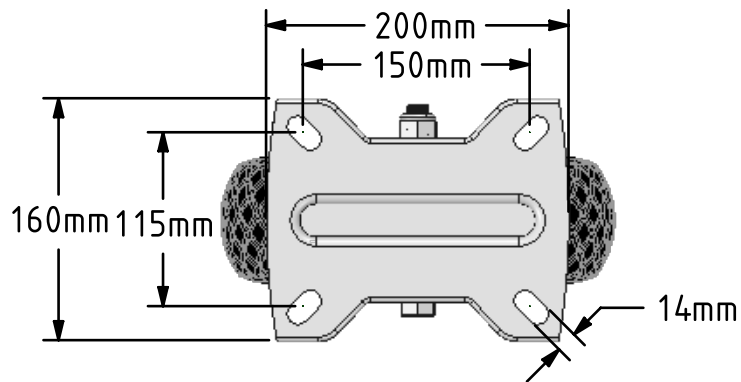


**DRAWING DISCLAIMER**  
 COPYRIGHT OF THIS DRAWING IS RESERVED BY BIL GROUP LTD. IT IS ISSUED ON CONDITION THAT IT IS NOT REPRODUCED, COPIED, OR DISCLOSED TO A THIRD PARTY EITHER WHOLLY OR IN PART WITHOUT THE CONSENT IN WRITING OF BIL GROUP LTD.



**Description:**  
 BZPCF260MRB6

Pressed steel fixed castor with a top plate fixing fitted with a 6 ply black diamond pattern pneumatic tyred steel centred wheel with a roller bearing. Wheel diameter 260mm, tread width 85mm, overall height 302mm, top plate 200mm x 160mm, hole centres 150mm x 115mm. Load capacity 270kg at max speed 4KPH, for non-towing applications please note we manufacture to order and therefore a 24 hour delivery may not be possible.



	NAME	DATE
DRAWN	Matt	16/03/17
APPROVED BY	Chris	16/03/17
SCALE	1:5	16/03/17
WEIGHT	3.568kg	16/03/17

**BIL** Group Ltd, Porte Marsh Road, Calne  
 Wiltshire, SN11 9BW, United Kingdom  
 Tel +44 (0)1249 822 222 Fax: +44 (0)1249 822 300  
 www.bilgroup.co.uk

TITLE	<b>BZPCF260MRB6</b>	
-------	---------------------	--

UNLESS OTHERWISE SPECIFIED DIMENSIONS ARE IN MILLIMETRES		SIZE	DWG NO.	REV
Unspecified Tolerances Machining ± 0.25mm Fabrication ± 1mm		A4	BILCW03BZPCF260MRB6__01	1
FILE NAME			BILCW03BZPCF260MRB6__01.PDF	SHEET 1 OF 1