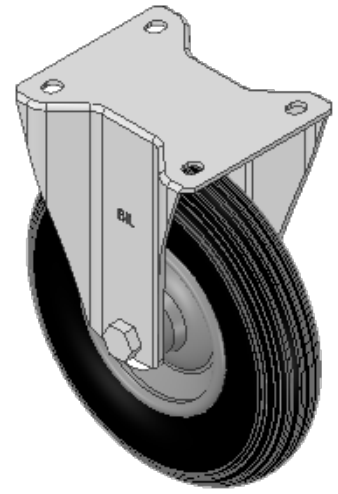
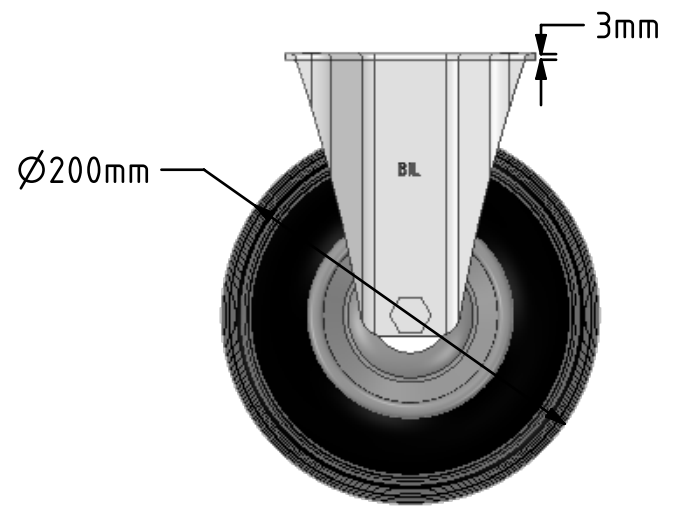
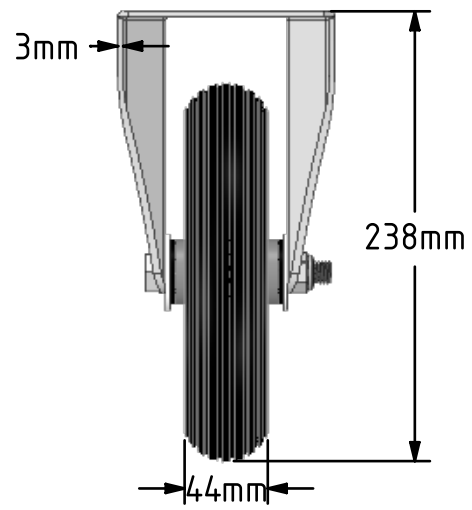
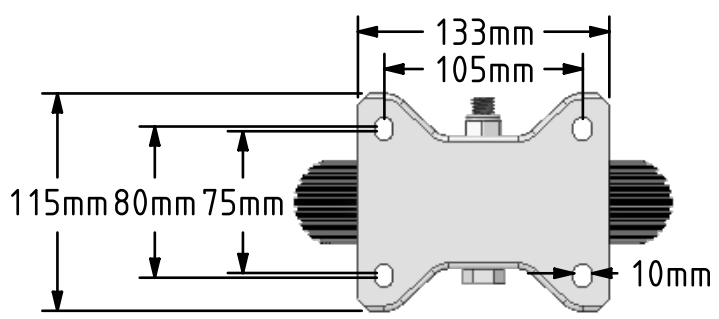


DRAWING DISCLAIMER  
 COPYRIGHT OF THIS DRAWING IS RESERVED BY BIL GROUP LTD. IT IS ISSUED ON CONDITION THAT IT IS NOT REPRODUCED, COPIED, OR DISCLOSED TO A THIRD PARTY EITHER WHOLLY OR IN PART WITHOUT THE CONSENT IN WRITING OF BIL GROUP LTD.



Description:  
**BZPCF200MRB**  
 Pressed steel fixed castor with a top plate fixing fitted with a black pneumatic tyre steel centred wheel (2 ply) with a roller bearing. Wheel diameter 200mm, tread width 44mm, overall height 238mm, top plate 133mm x 110mm, hole centres 105mm x 80/75mm. Load capacity 75kg.



	NAME	DATE
DRAWN	Matt	28/01/19
APPROVED BY	Chris	28/01/19
SCALE	1:4	28/01/19
WEIGHT	1.849kg	28/01/19

 BIL Group Ltd, Porte Marsh Road, Calne  
 Wiltshire, SN11 9BW, United Kingdom  
 Tel +44 (0)1249 822 222 Fax: +44 (0)1249 822 300  
 www.bilgroup.co.uk

TITLE	
<b>BZPCF200MRB</b>	

UNLESS OTHERWISE SPECIFIED DIMENSIONS ARE IN MILLIMETRES  
 Unspecified Tolerances  
 Machining ± 0.25mm  
 Fabrication ± 1mm

SIZE	DWG NO.	REV
A4	BILCW03BZPCF200MRB_01	1
FILE NAME	BILCW03BZPCF200MRB_01.PDF SHEET 1 OF 1	