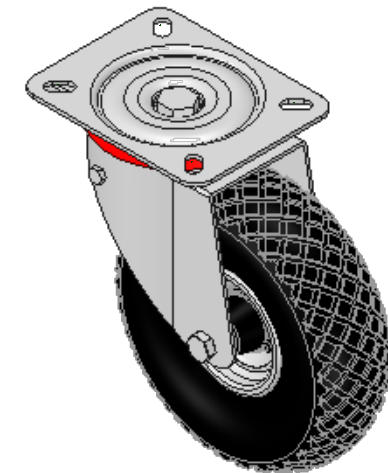
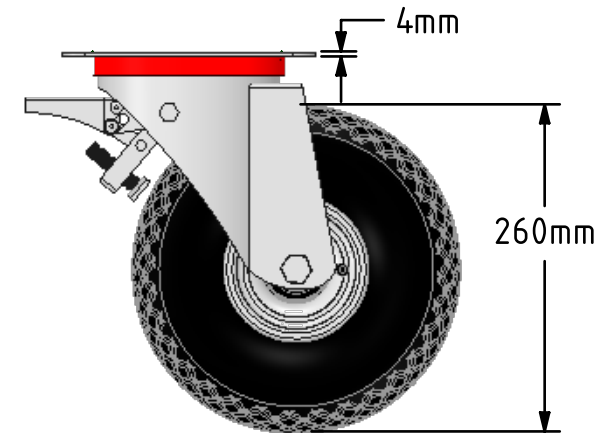
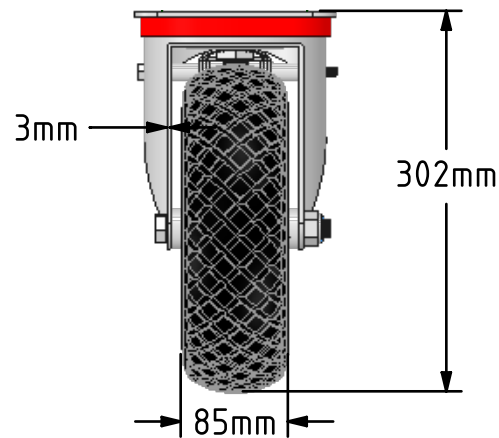
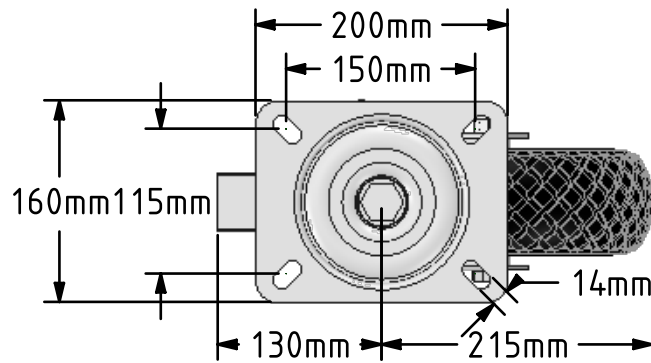



DRAWING DISCLAIMER

COPYRIGHT OF THIS DRAWING IS RESERVED BY BIL GROUP LTD. IT IS ISSUED ON CONDITION THAT IT IS NOT REPRODUCED, COPIED, OR DISCLOSED TO A THIRD PARTY EITHER WHOLLY OR IN PART WITHOUT THE CONSENT IN WRITING OF BIL GROUP LTD.

**Description:**
BZPC260MRB6SWB

Pressed steel swivel castor with a top plate fixing fitted with a 6 ply black diamond pattern pneumatic tyred steel centred wheel with a roller bearing and total lock brake. Wheel diameter 260mm, tread width 85mm, overall height 302mm, top plate 200mm x 160mm, hole centres 150mm x 115mm. Load capacity 270kg at max speed 4KPH, for non-towing applications please note we manufacture to order and therefore a 24 hour delivery may not be possible.



	NAME	DATE	 BIL Group Ltd, Porte Marsh Road, Calne Wiltshire, SN11 9BW, United Kingdom Tel +44 (0)1249 822 222 Fax: +44 (0)1249 822 300 www.bilgroup.co.uk	
DRAWN	Matt	16/03/17		
APPROVED BY	Chris	16/03/17		
SCALE	1:6	16/03/17		
WEIGHT	5.403kg	16/03/17		
UNLESS OTHERWISE SPECIFIED DIMENSIONS ARE IN MILLIMETRES			TITLE	
Unspecified Tolerances Machining $\pm 0.25\text{mm}$ Fabrication $\pm 1\text{mm}$			BZPC260MRB6SWB	
			SIZE A4	DWG NO. BILCW03BZPC260MRB6SWB__01
			FILE NAME BILCW03BZPC260MRB6SWB__01.PDF	REV 1
			SHEET 1 OF 1	