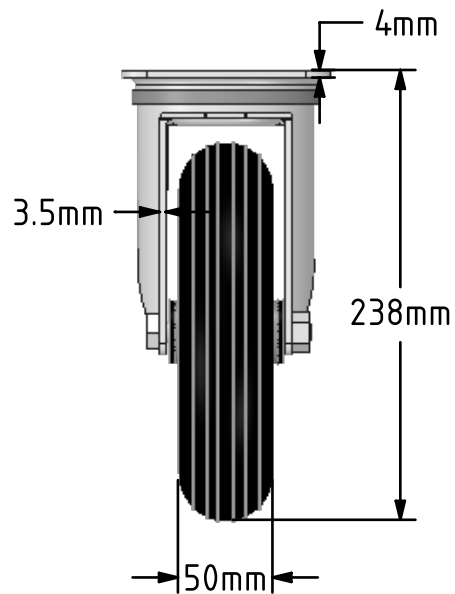
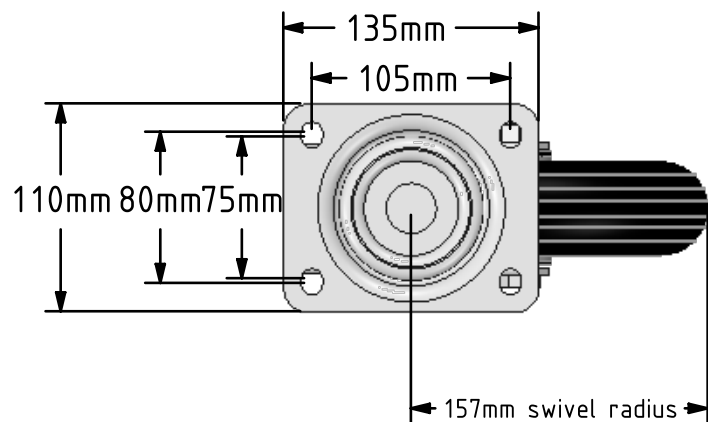
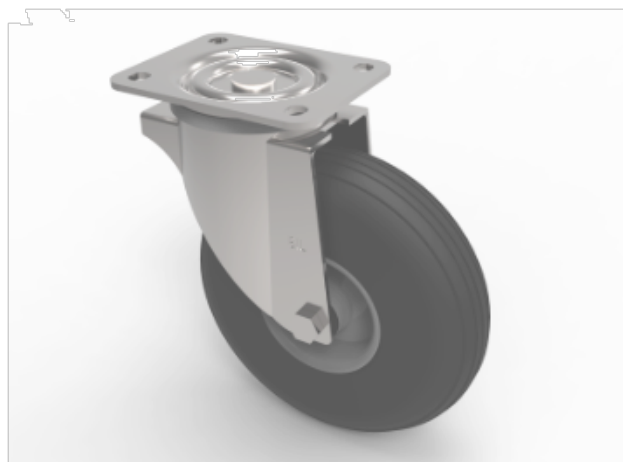


DRAWING DISCLAIMER
 COPYRIGHT OF THIS DRAWING IS RESERVED BY BIL GROUP LTD. IT IS ISSUED ON CONDITION THAT IT IS NOT REPRODUCED, COPIED, OR DISCLOSED TO A THIRD PARTY EITHER WHOLLY OR IN PART WITHOUT THE CONSENT IN WRITING OF BIL GROUP LTD.



Description:
 BZPC200MPUB

Pressed steel swivel castor with a top plate fixing fitted with a black puncture proof steel disc centred wheel with a roller bearing. Wheel diameter 200mm, tread width 50mm, overall height 238mm, top plate 135mm x 110mm, hole centres 105mm x 80/75mm. Load capacity 70kg.



	NAME	DATE
DRAWN	Matt	05/04/16
APPROVED BY	Tim M	05/04/16
SCALE	1:4	05/04/16
WEIGHT	2.21kg	05/04/16

 BIL Group Ltd, Porte Marsh Road, Calne
 Wiltshire, SN11 9BW, United Kingdom
 Tel +44 (0)1249 822 222 Fax: +44 (0)1249 822 300
 www.bilgroup.eu

TITLE	
BZPC200MPUB	

UNLESS OTHERWISE SPECIFIED DIMENSIONS ARE IN MILLIMETRES		SIZE	DWG NO.	REV
Unspecified Tolerances Machining ± 0.25mm Fabrication ± 1mm		A4	BILCW03BZPC200MPUB_01	1
FILE NAME		SHEET 1 OF 1		