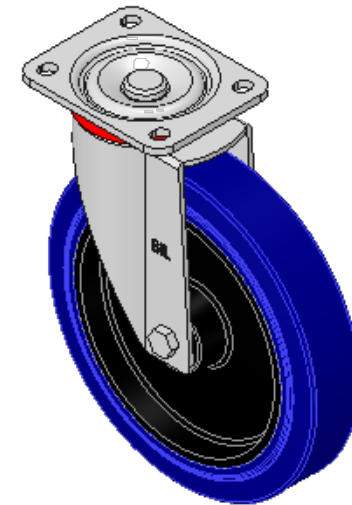
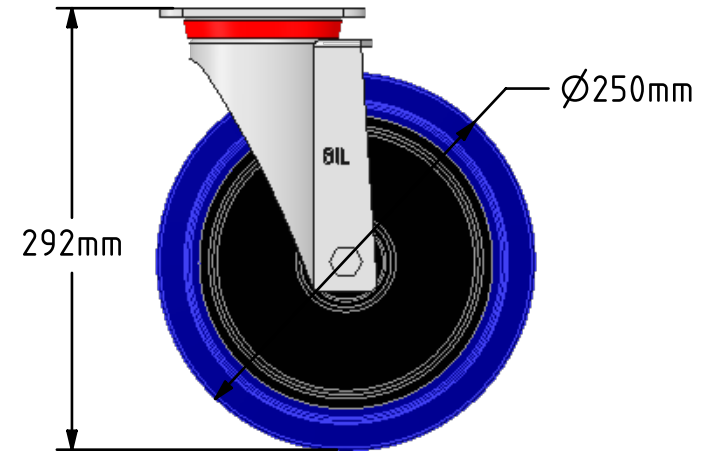
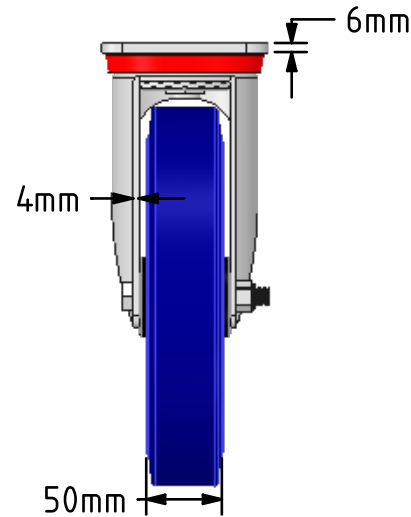
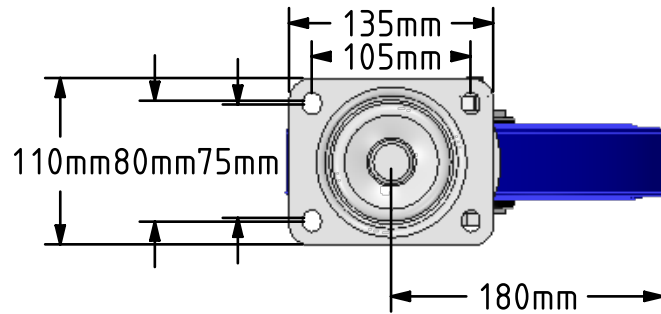
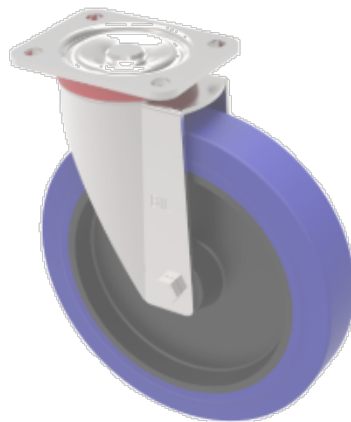



DRAWING DISCLAIMER

COPYRIGHT OF THIS DRAWING IS RESERVED BY BIL GROUP LTD. IT IS ISSUED ON CONDITION THAT IT IS NOT REPRODUCED, COPIED, OR DISCLOSED TO A THIRD PARTY EITHER WHOLLY OR IN PART WITHOUT THE CONSENT IN WRITING OF BIL GROUP LTD.

**Description:****BZP250RNB**

Pressed steel swivel castor with a flat plate fixing fitted with a blue elastic rubber tyre on black nylon centred wheel with roller bearing. Wheel diameter 250mm, tread width 50mm, overall height 292mm, plate size 135mm x 110mm, hole centres 105mm x 80mm. Load capacity 500kg.



	NAME	DATE	 <div>BIL Group Ltd, Porte Marsh Road, Calne Wiltshire, SN11 9BW, United Kingdom Tel +44 (0)1249 822 222 Fax: +44 (0)1249 822 300 www.bilgroup.co.uk</div>	
DRAWN	Matt	08/02/17		
APPROVED BY	Tim W	08/02/17		
SCALE	1:5	08/02/17		
WEIGHT	4.363kg	08/02/17		
UNLESS OTHERWISE SPECIFIED DIMENSIONS ARE IN MILLIMETRES			TITLE	
Unspecified Tolerances Machining $\pm 0.25\text{mm}$ Fabrication $\pm 1\text{mm}$			BZP250RNB	
			SIZE A4	REV 1
			DWG NO. BILCW03BZP250RNB__01	
			FILE NAME BILCW03BZP250RNB__01.PDF	
			SHEET 1 OF 1	