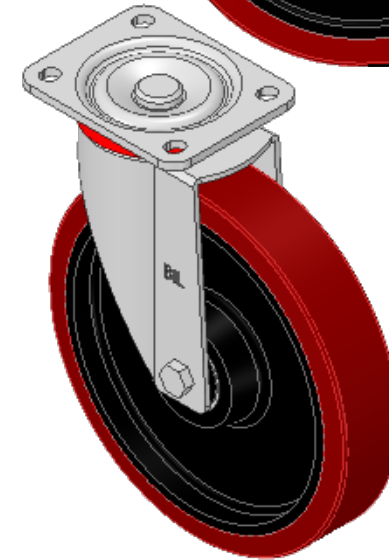
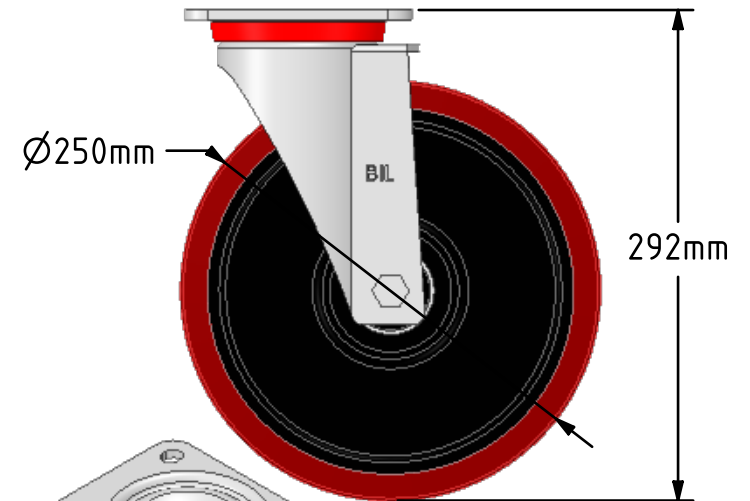
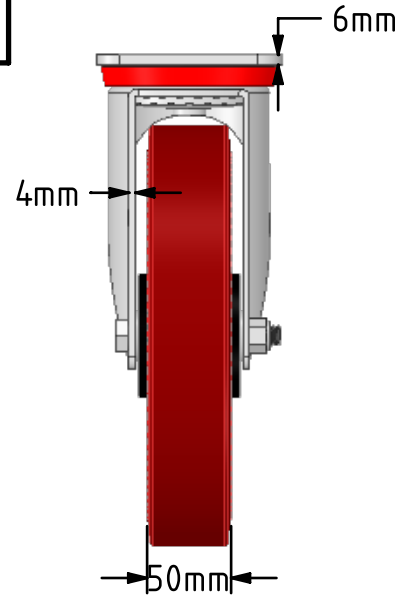
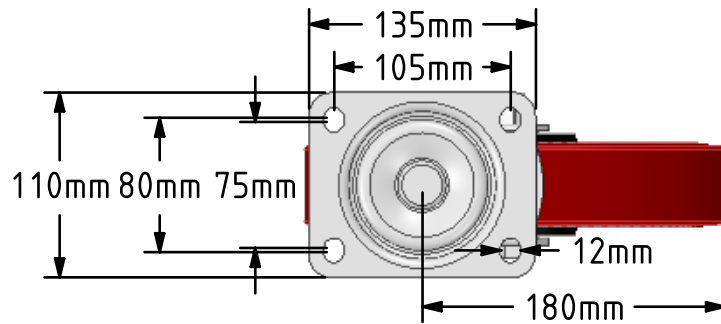
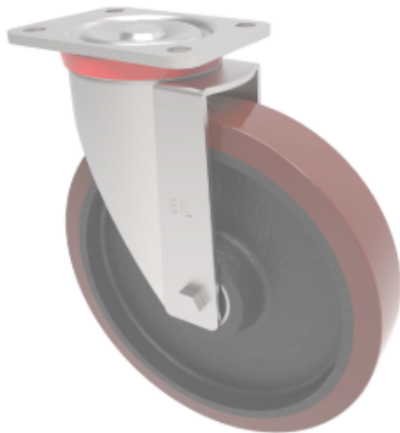


DRAWING DISCLAIMER

COPYRIGHT OF THIS DRAWING IS RESERVED BY BIL GROUP LTD. IT IS ISSUED ON CONDITION THAT IT IS NOT REPRODUCED, COPIED, OR DISCLOSED TO A THIRD PARTY EITHER WHOLLY OR IN PART WITHOUT THE CONSENT IN WRITING OF BIL GROUP LTD.

**Description:**
BZP250PTBJ

Pressed steel swivel castor with a flat plate fixing fitted with a brown polyurethane on cast iron wheel with a ball bearing. Wheel diameter 250mm, tread width 50mm, overall height 292mm, plate size 135mm x 110mm, hole centres 105mm x 80/75mm. Load capacity 800kg.



	NAME	DATE
DRAWN	Matt	28/02/19
APPROVED BY	Chris	28/02/19
SCALE	2:9	28/02/19
WEIGHT	8.703kg	28/02/19

UNLESS OTHERWISE SPECIFIED DIMENSIONS ARE IN MILLIMETRES

Unspecified Tolerances
Machining $\pm 0.25\text{mm}$
Fabrication $\pm 1\text{mm}$



BIL Group Ltd, Porte Marsh Road, Calne
Wiltshire, SN11 9BW, United Kingdom
Tel +44 (0)1249 822 222 Fax: +44 (0)1249 822 300
www.bilgroup.co.uk

TITLE

BZP250PTBJ

SIZE

DWG NO.

A4

BILCW03BZP250PTBJ__01

REV

1

FILE NAME

BILCW03BZP250PTBJ__01.PDF

SHEET 1 OF 1