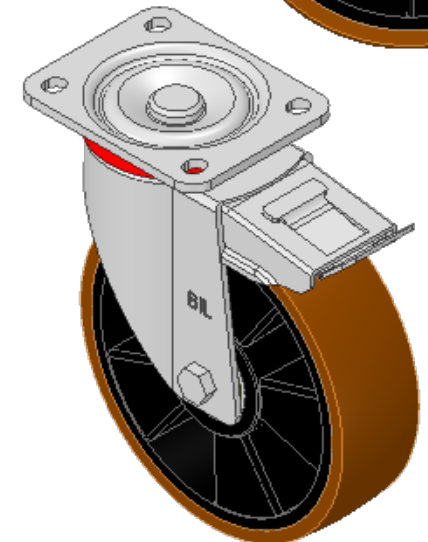
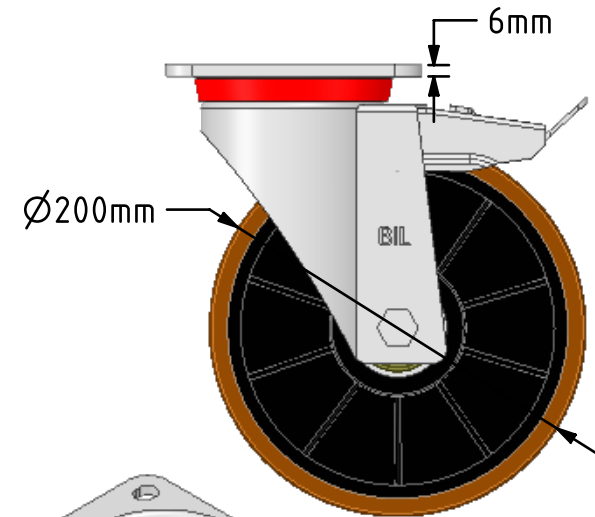
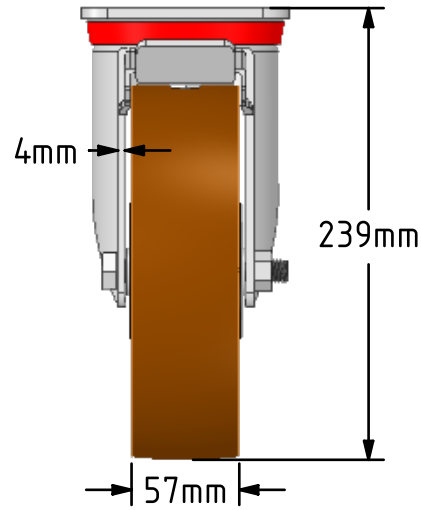
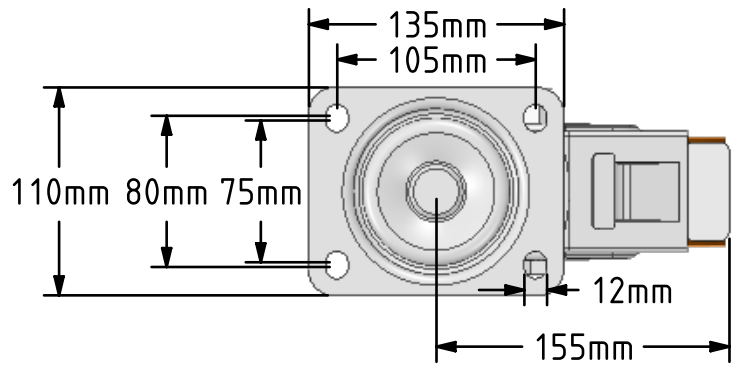
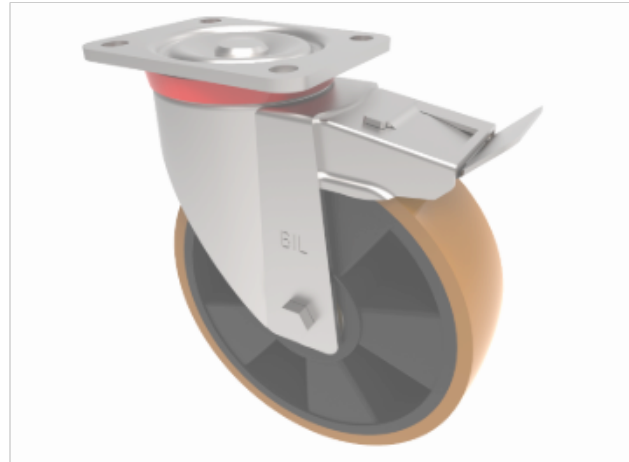


**DRAWING DISCLAIMER**  
 COPYRIGHT OF THIS DRAWING IS RESERVED BY BIL GROUP LTD. IT IS ISSUED ON CONDITION THAT IT IS NOT REPRODUCED, COPIED, OR DISCLOSED TO A THIRD PARTY EITHER WHOLLY OR IN PART WITHOUT THE CONSENT IN WRITING OF BIL GROUP LTD.



**Description:**  
 BZP200XPNBJSWB  
 Pressed swivel castor with a top plate fixing fitted with a brown polyurethane tyre nylon centred wheel with ball bearings and a total lock brake, Wheel diameter 200mm, tread width 57mm, overall height 239mm, top plate 135mm x 110mm, hole centres 105mm x 80/75mm. Load capacity 700kg.



	NAME	DATE
DRAWN	Matt	21/02/19
APPROVED BY	Kevin	21/02/19
SCALE	1:4	21/02/19
WEIGHT	3.979kg	21/02/19

UNLESS OTHERWISE SPECIFIED DIMENSIONS ARE IN MILLIMETRES  
 Unspecified Tolerances  
 Machining ± 0.25mm  
 Fabrication ± 1mm

**BIL** Group Ltd, Porte Marsh Road, Calne Wiltshire, SN11 9BW, United Kingdom  
 Tel +44 (0)1249 822 222 Fax: +44 (0)1249 822 300  
 www.bilgroup.co.uk

TITLE  
**BZP200XPNBJSWB**

SIZE	DWG NO.	REV
A4	BILCW03BZP200XPNBJSWB_01	1

FILE NAME BILCW03BZP200XPNBJSWB\_01.PDF SHEET 1 OF 1