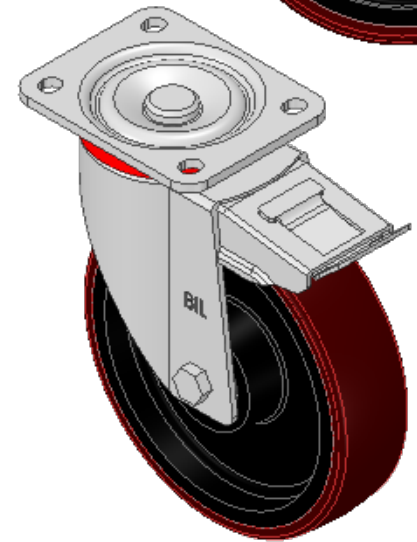
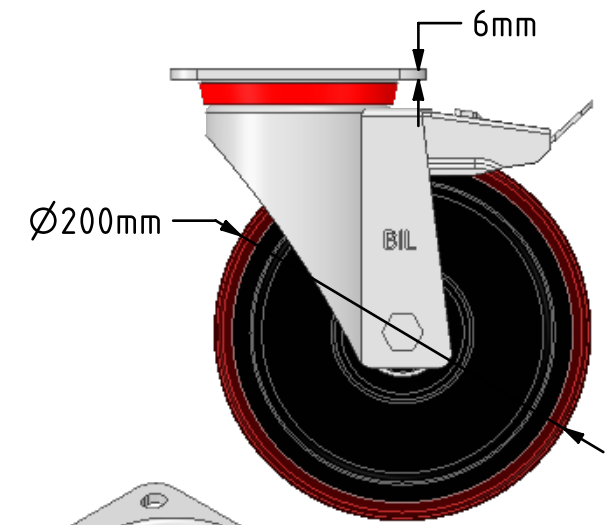
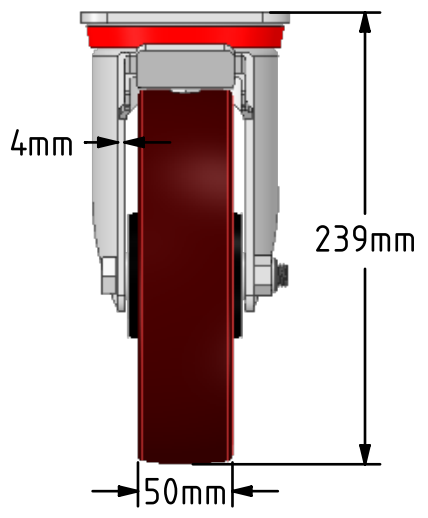
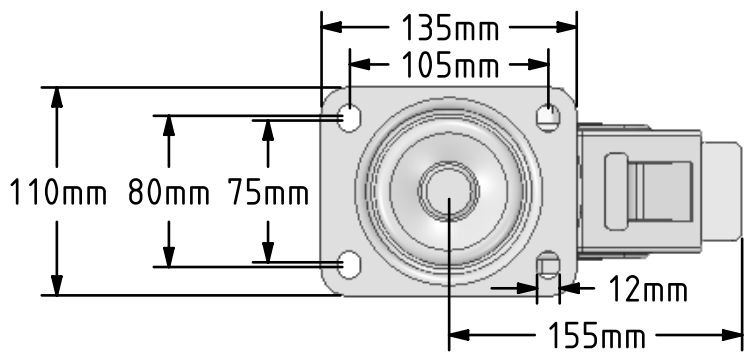
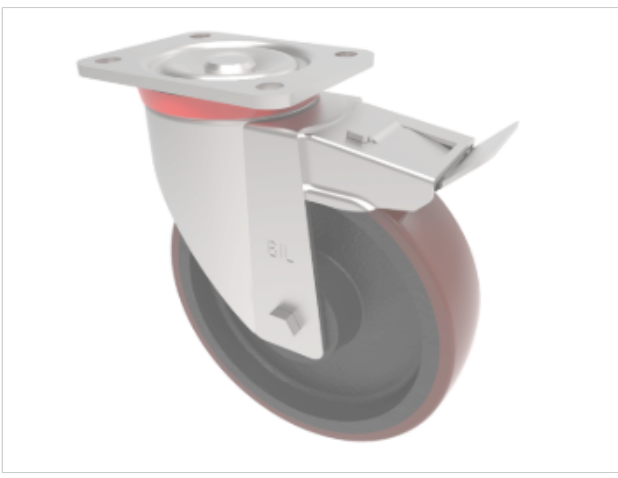


DRAWING DISCLAIMER
 COPYRIGHT OF THIS DRAWING IS RESERVED BY BIL GROUP LTD. IT IS ISSUED ON CONDITION THAT IT IS NOT REPRODUCED, COPIED, OR DISCLOSED TO A THIRD PARTY EITHER WHOLLY OR IN PART WITHOUT THE CONSENT IN WRITING OF BIL GROUP LTD.



Description:
 BZP200PTBJSWB
 Pressed steel swivel castor with a flat plate fixing fitted with a brown polyurethane tyre on cast iron centred wheel with a ball bearing and total lock brake. Wheel diameter 200mm, tread width 50mm, overall height 239mm, plate size 135mm x 110mm, hole centres 105mm x 80/75mm. Load capacity 800kg.



	NAME	DATE
DRAWN	Matt	28/02/19
APPROVED BY	Chris	28/02/19
SCALE	1:4	28/02/19
WEIGHT	6.214kg	28/02/19

UNLESS OTHERWISE SPECIFIED DIMENSIONS ARE IN MILLIMETRES
 Unspecified Tolerances
 Machining ± 0.25mm
 Fabrication ± 1mm

BIL BIL Group Ltd, Porte Marsh Road, Calne Wiltshire, SN11 9BW, United Kingdom
 Tel +44 (0)1249 822 222 Fax: +44 (0)1249 822 300
 www.bilgroup.co.uk

TITLE		REV 1
BZP200PTBJSWB		
SIZE A4	DWG NO. BILCW03BZP200PTBJSWB_01	
FILE NAME BILCW03BZP200PTBJSWB_01.PDF		SHEET 1 OF 1