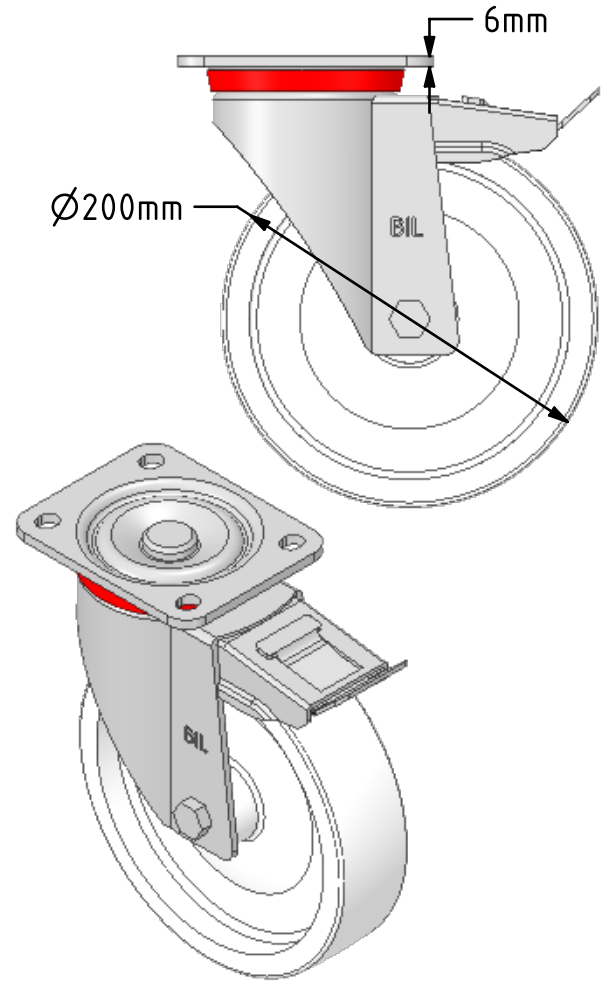
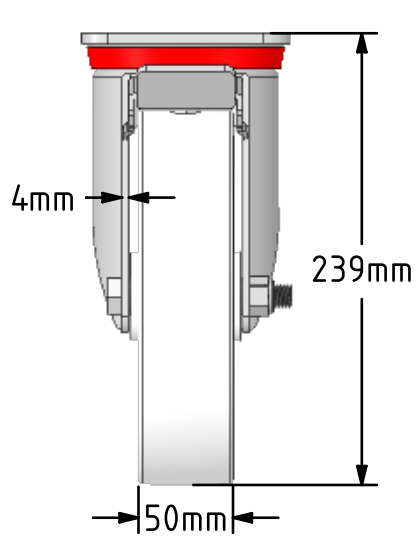
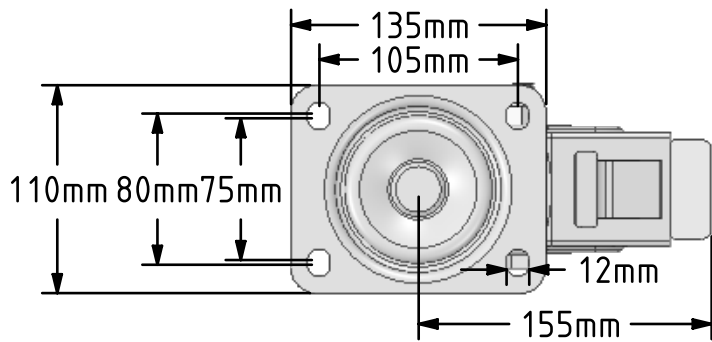
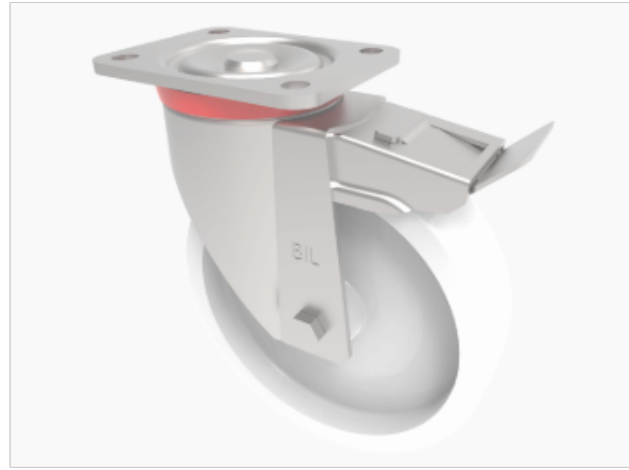


**DRAWING DISCLAIMER**  
 COPYRIGHT OF THIS DRAWING IS RESERVED BY BIL GROUP LTD. IT IS ISSUED ON CONDITION THAT IT IS NOT REPRODUCED, COPIED, OR DISCLOSED TO A THIRD PARTY EITHER WHOLLY OR IN PART WITHOUT THE CONSENT IN WRITING OF BIL GROUP LTD.



**Description:**  
**BZP200NYSWB**  
 Pressed steel swivel castor with a top plate fixing fitted with a white nylon wheel with plain bearings and total lock brake. Wheel diameter 200mm, tread width 50mm, overall height 238mm, top plate 135mm x 110mm, hole centres 105mm x 80/75mm. Load capacity 800kg.



	NAME	DATE
DRAWN	Matt	08/01/19
APPROVED BY	Tim W	08/01/19
SCALE	1:4	08/01/19
WEIGHT	3.42kg	08/01/19

**BIL** BIL Group Ltd, Porte Marsh Road, Calne Wiltshire, SN11 9BW, United Kingdom  
 Tel +44 (0)1249 822 222 Fax: +44 (0)1249 822 300  
 www.bilgroup.co.uk

UNLESS OTHERWISE SPECIFIED DIMENSIONS ARE IN MILLIMETRES  
 Unspecified Tolerances  
 Machining ± 0.25mm  
 Fabrication ± 1mm

TITLE		REV
<b>BZP200NYSWB</b>		<b>1</b>
SIZE	DWG NO.	
A4	BILCW03BZP200NYSWB_01	
FILE NAME	SHEET 1 OF 1	
BILCW03BZP200NYSWB_01.PDF		