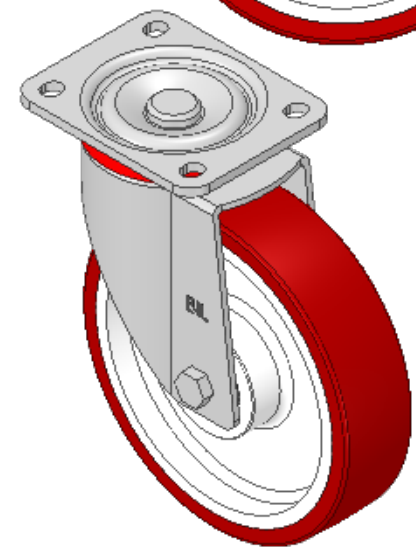
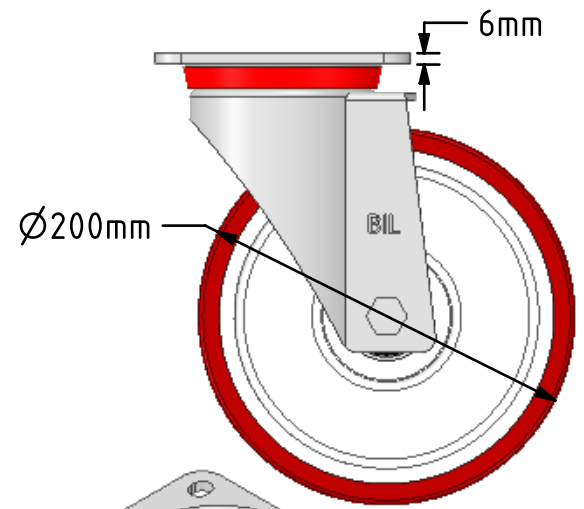
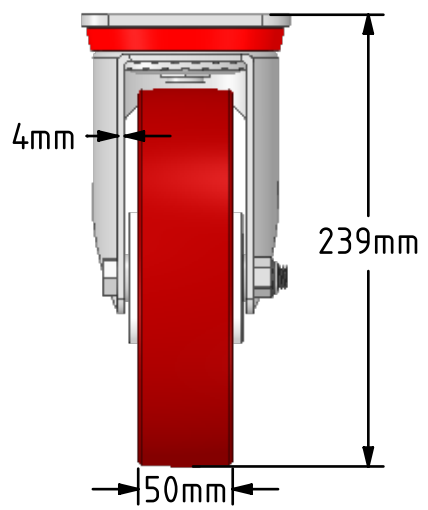
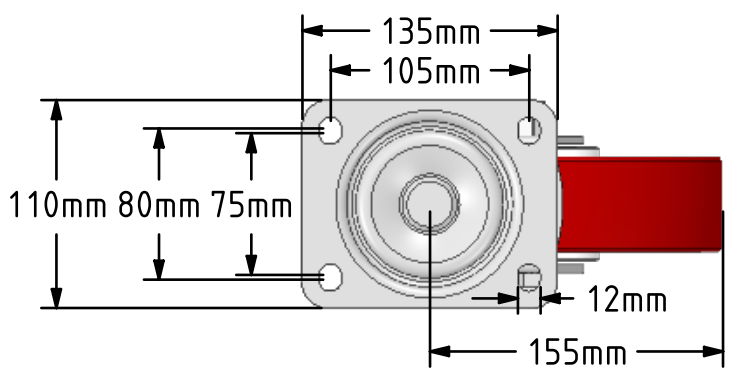
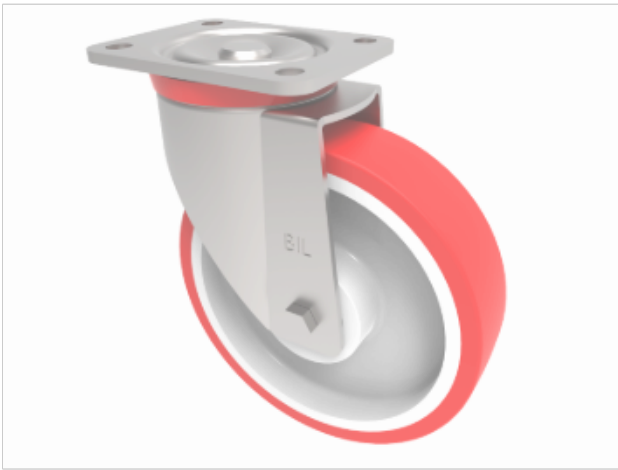


DRAWING DISCLAIMER
 COPYRIGHT OF THIS DRAWING IS RESERVED BY BIL GROUP LTD. IT IS ISSUED ON CONDITION THAT IT IS NOT REPRODUCED, COPIED, OR DISCLOSED TO A THIRD PARTY EITHER WHOLLY OR IN PART WITHOUT THE CONSENT IN WRITING OF BIL GROUP LTD.



Description:
BZP200NPBJ
 Pressed steel swivel castor with a top plate fixing fitted with a red polyurethane on white nylon wheel with ball bearings. Wheel diameter 200mm, tread width 50mm, overall height 239mm, top plate 135mm x 110mm, hole centres 105mm x 80mm. Load capacity 700kg.



	NAME	DATE
DRAWN	Matt	13/02/19
APPROVED BY	Chris	13/02/19
SCALE	1:4	13/02/19
WEIGHT	3.418kg	13/02/19

 BIL Group Ltd, Porte Marsh Road, Calne
 Wiltshire, SN11 9BW, United Kingdom
 Tel +44 (0)1249 822 222 Fax: +44 (0)1249 822 300
 www.bilgroup.co.uk

UNLESS OTHERWISE SPECIFIED DIMENSIONS ARE IN MILLIMETRES
 Unspecified Tolerances
 Machining ± 0.25mm
 Fabrication ± 1mm

TITLE		REV
BZP200NPBJ		2
SIZE	DWG NO.	
A4	BILCW03BZP200NPBJ_02	
FILE NAME	SHEET 1 OF 1	
BILCW03BZP200NPBJ_02.PDF		